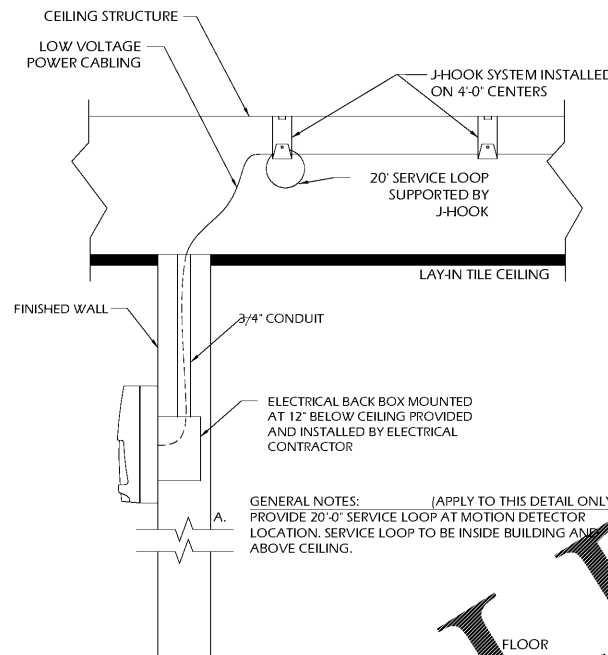


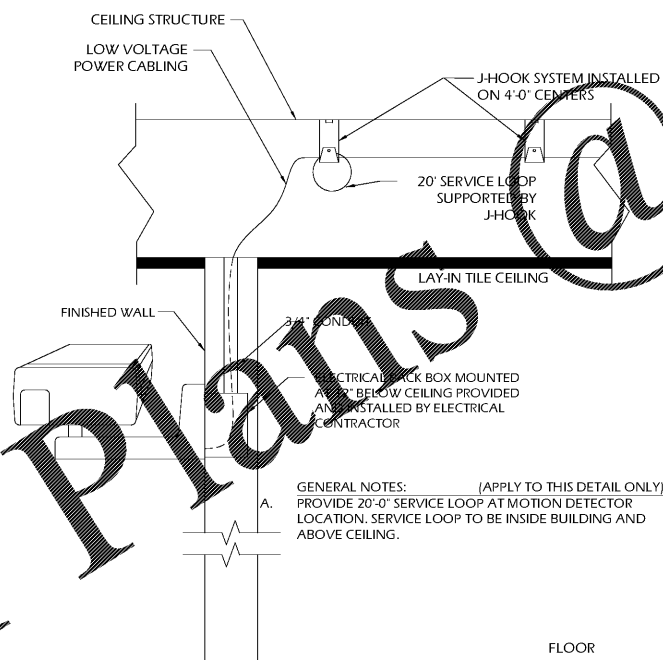
GENERAL NOTES: [APPLY TO THIS DETAIL ONLY]
 A. PROVIDE 20'-0" SERVICE LOOP AT MOTION DETECTOR LOCATION. SERVICE LOOP TO BE INSIDE BUILDING AND ABOVE CEILING.

DETAIL NOT TO SCALE 1 INTERIOR CEILING MOUNT 360° MOTION DETECTOR



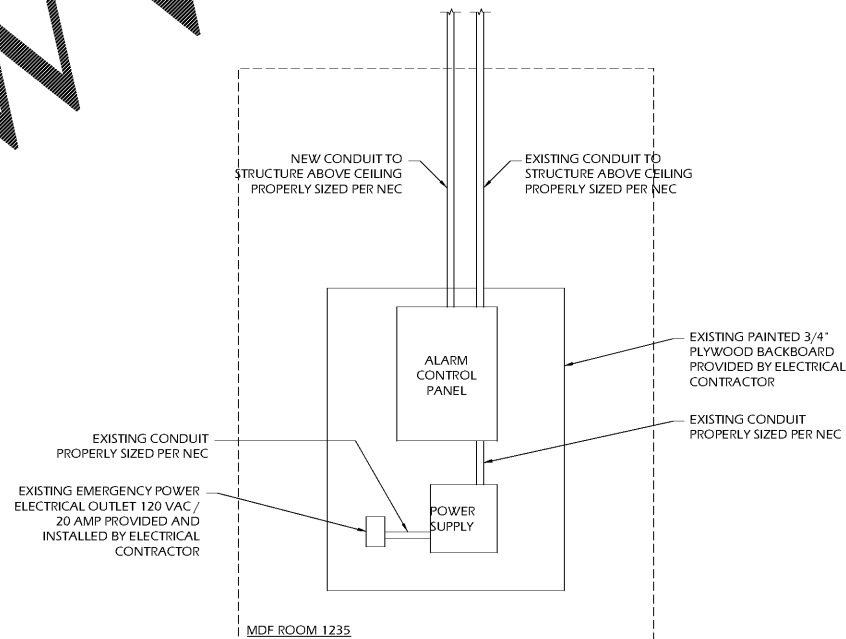
GENERAL NOTES: [APPLY TO THIS DETAIL ONLY]
 PROVIDE 20'-0" SERVICE LOOP AT MOTION DETECTOR LOCATION. SERVICE LOOP TO BE INSIDE BUILDING AND ABOVE CEILING.

DETAIL NOT TO SCALE 2 INTERIOR WALL MOUNT MOTION DETECTOR



GENERAL NOTES: [APPLY TO THIS DETAIL ONLY]
 A. PROVIDE 20'-0" SERVICE LOOP AT MOTION DETECTOR LOCATION. SERVICE LOOP TO BE INSIDE BUILDING AND ABOVE CEILING.

DETAIL NOT TO SCALE 3 INTERIOR WALL MOUNT MOTION DETECTOR



DETAIL NOT TO SCALE 4 ALARM PANEL

CHAPMAN GRIFFIN LANIER SUSENBACH ARCHITECTS
 2900 Cumberland Parkway, Suite 350, Atlanta, Ga 30339, Phone: 404.733.5493

CHAPMAN GRIFFIN LANIER SUSENBACH ARCHITECTS
 2017
 RELEASED FOR CONSTRUCTION

J&A ENGINEERING CONSULTANTS
 4995 LONN ROSS RD, SUITE 202
 SANDY SPRINGS, GA 30076
 PHONE: 770.477.4020
 FAX: 770.233.6678

DATE	NO.	DESCRIPTION
03/27/18		CODE PRELIMINARY SUBMITTAL DESIGN DEVELOPMENT
06/19/18		CODE PRELIMINARY SUBMITTAL DESIGN DEVELOPMENT
06/19/18	1	FINAL CODE SUBMITTAL
10/10/18		FINAL CODE SUBMITTAL
11/01/18		ISSUED FOR PROPOSALS

RIVERWOOD HIGH SCHOOL - PHASE 3-7 AUDITORIUM/GYMNASIUM ADDITION
 5900 RAIDER DRIVE NW SANDY SPRINGS, GA 30028
 FULTON COUNTY SCHOOLS RFP NO. XXX-XX

SHEET TITLE: DETAILS
 PROJECT NO.: 15099
 DATE: 06-19-18
 DRAWN BY: Author
 CHECKED BY: Checker
 SHEET NO.: LV-504