



CHAPMAN GRIFFIN LANIEF SUSENBACH ARCHITECTS, INC.  
2017



J&A ENGINEERING CONSULTANTS  
4995 LONNERSHIP ROAD, SUITE 202  
SAWNETTA, GEORGIA 30056  
PHONE: 770-877-4026  
FAX: 770-233-6678

DATE	NO.	DESCRIPTION
03/27/18		CODE PRELIMINARY SUBMITTAL DESIGN DEVELOPMENT
06/19/18		FOR CONSTRUCTION DOCUMENTS
06/19/18	1	FINAL CODE SUBMITTAL
10/12/18		FINAL CODE SUBMITTAL
11/01/18		ISSUED FOR PROPOSALS

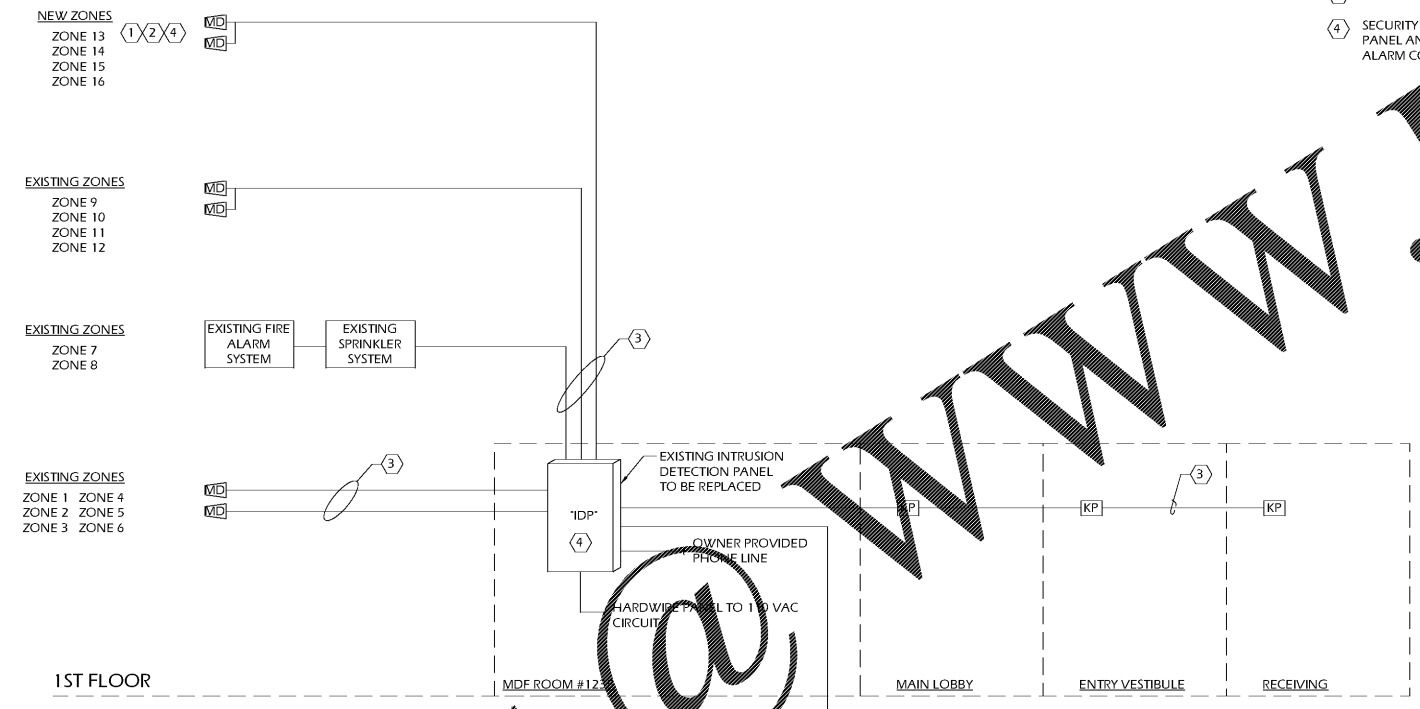
**CHAPMAN GRIFFIN LANIEF SUSENBACH ARCHITECTS**  
DOE FACILITY CODE: 660-3086  
**RIVERWOOD HIGH SCHOOL - PHASE 3-7**  
**AUDITORIUM/GYMNASIUM ADDITION**  
5900 RAIDER DRIVE NW SANDY SPRINGS, GA 30228  
FULTON COUNTY SCHOOLS RFP NO. XXX-XX

SHEET TITLE	
<b>ONE-LINE DIAGRAM</b>	
PROJECT NO.	15029
DATE	06-19-18
DRAWN BY	Author
CHECKED BY	Checker
SHEET NO.	

**LV-403**

KEY NOTE: (APPLIES TO DETAIL 1 ON LV-03)

- 1 SECURITY CONTRACTOR TO PROVIDE DUAL TECHNOLOGY MOTION DETECTORS PER THE CONTRACT SPECIFICATIONS. VERIFY QUANTITY AND LOCATION OF ALL INTRUSION DEVICES WITH CONTRACT DOCUMENTS.
- 2 ALL ZONES SHALL BE CONNECTED TO POLING ESD ORIGINATING FROM THE ALARM CONTROL PANEL.
- 3 SECURITY CONTRACTOR TO PROVIDE AND INSTALL ALL LOW VOLTAGE CABLE.
- 4 SECURITY CONTRACTOR IS RESPONSIBLE FOR PROGRAMMING ALL DEVICES INTO NEW PANEL AND TESTING OF EACH DEVICE TO ENSURE UNIQUE ZONE REPORTING BACK TO ALARM CONTROL PANEL.



ONE-LINE N.T.S. 1 INTRUSION DETECTION SYSTEM

10/21/2018 2:42:08 PM

G  
F  
E  
D  
C  
B  
A

1 2 3 4 5 6 7 8 9

Order Plans @ www.LDOnline.com