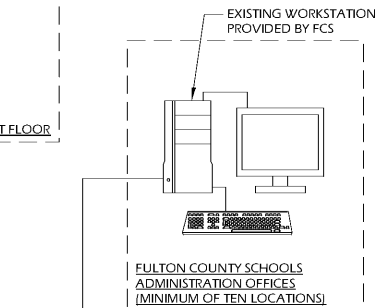
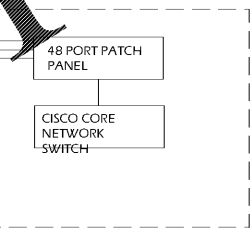
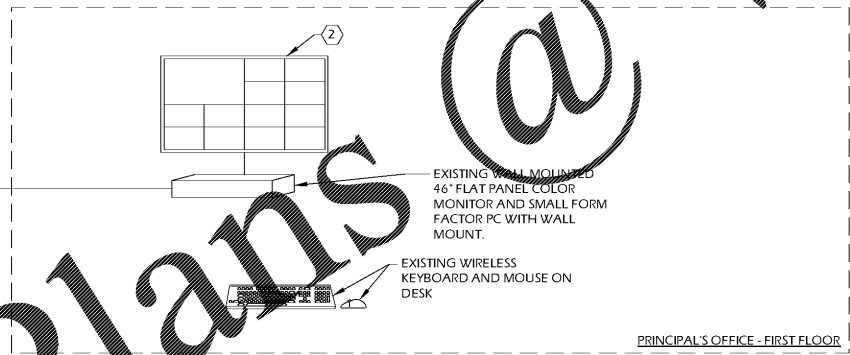
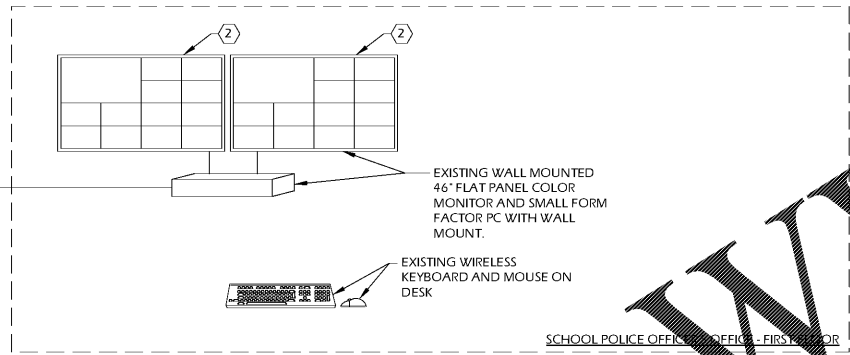
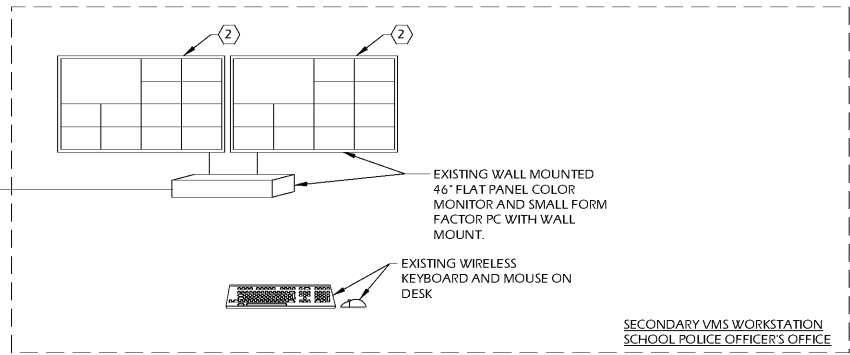
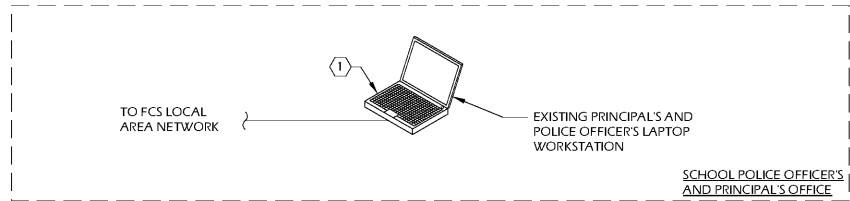


Order Plans @

WWW.LDOnline.com



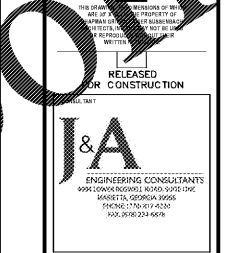
ONE-LINE N.T.S. 1 CCTV SYSTEM

GENERAL NOTES (APPLY TO 1/LV-402 ONLY)

- A. ALL CABLES TO BE PLENUM GRADE. VIDEO SURVEILLANCE SYSTEM CABLES TO BE MINIMUM OF CATEGORY 6. SEE SPECIFICATIONS FOR REQUIREMENTS.
- B. REFERENCE FLOOR PLAN DRAWINGS, SPECIFICATIONS, & SCHEDULES FOR COMPLETE REQUIREMENTS.
- C. ALL EQUIPMENT TO BE PROVIDED BY SECURITY CONTRACTOR EXCEPT WHERE SPECIFICALLY NOTED AS "PROVIDED BY OWNER", "EXISTING", OR "PROVIDED BY VOICE/DATA CONTRACTOR".
- D. ALL EXISTING CAMERAS, MONITORS, DIGITAL VIDEO RECORDERS, CCTV POWER SUPPLIES, LOW VOLTAGE POWER AND VIDEO SIGNAL CABLE TO BE REMOVED BY CONTRACTOR. ALL EQUIPMENT MUST BE TURNED OVER TO OWNER. ALL ANALOG CABLE TO BE REMOVED AND DISCARDED BY SECURITY CONTRACTOR.
- E. ALL VIDEO DISPLAY MONITORS PROVIDED FOR THIS PROJECT MUST BE RATED FOR 24/7 CONTINUOUS OPERATION.
- F. ALL UPS UNITS MUST BE POWERED BY EMERGENCY POWER CIRCUITS. ELECTRICAL CONTRACTOR MUST PROVIDE AN INSTALLED DEDICATED, UNINTERRUPTED EMERGENCY POWER CIRCUIT AND RECEPTACLE. IF CIRCUITS ARE NOT AVAILABLE, NOTE THAT EMERGENCY GENERATOR AND ASSOCIATED ELECTRICAL PANELS ARE EXISTING.

NOTES (APPLY TO 1/LV-402 ONLY)

- 1 SECURITY CONTRACTOR TO ENSURE THAT NEW PHASE 3-7 CAMERAS ARE AVAILABLE FOR LIVE AND RECORDED VIEWS ON FCS LAPTOP WITH AVIGILON VMS CURRENTLY INSTALLED.
- 2 SECURITY CONTRACTOR TO ENSURE THAT NEW PHASE 3-7 CAMERAS ARE AVAILABLE FOR LIVE AND RECORDED VIEWS ON EXISTING AVIGILON WORKSTATIONS.



DATE	NO.	DESCRIPTION
03/27/18		CODE PRELIMINARY SUBMITTAL DESIGN DEVELOPMENT
06/19/18		CODE CONSTRUCTION DOCUMENTS
06/19/18	1	FINAL CODE SUBMITTAL
10/10/18		FINAL CODE SUBMITTAL ISSUED FOR PROPOSALS

DOE FACILITY CODE: 660-3086  
 RIVERWOOD HIGH SCHOOL - PHASE 3-7 AUDITORIUM/GYMNASIUM ADDITION  
 5900 RAIDER DRIVE NW SANDY SPRINGS, GA 30228  
 FULTON COUNTY SCHOOLS RFP NO. XXX-XX

BHEET TITLE  
 ONE-LINE DIAGRAM  
 PROJECT NO. 15099  
 DATE: 06-19-18  
 DRAWN BY: Author  
 CHECKED BY: Checker

BHEET NO.  
 LV-402

CHAPMAN GRIFFIN LANIEF SUSSENBACH ARCHITECTS  
 2500 Cumberland Park Way, Suite 350, Atlanta, Ga 30339 Phone: 404.733.5493