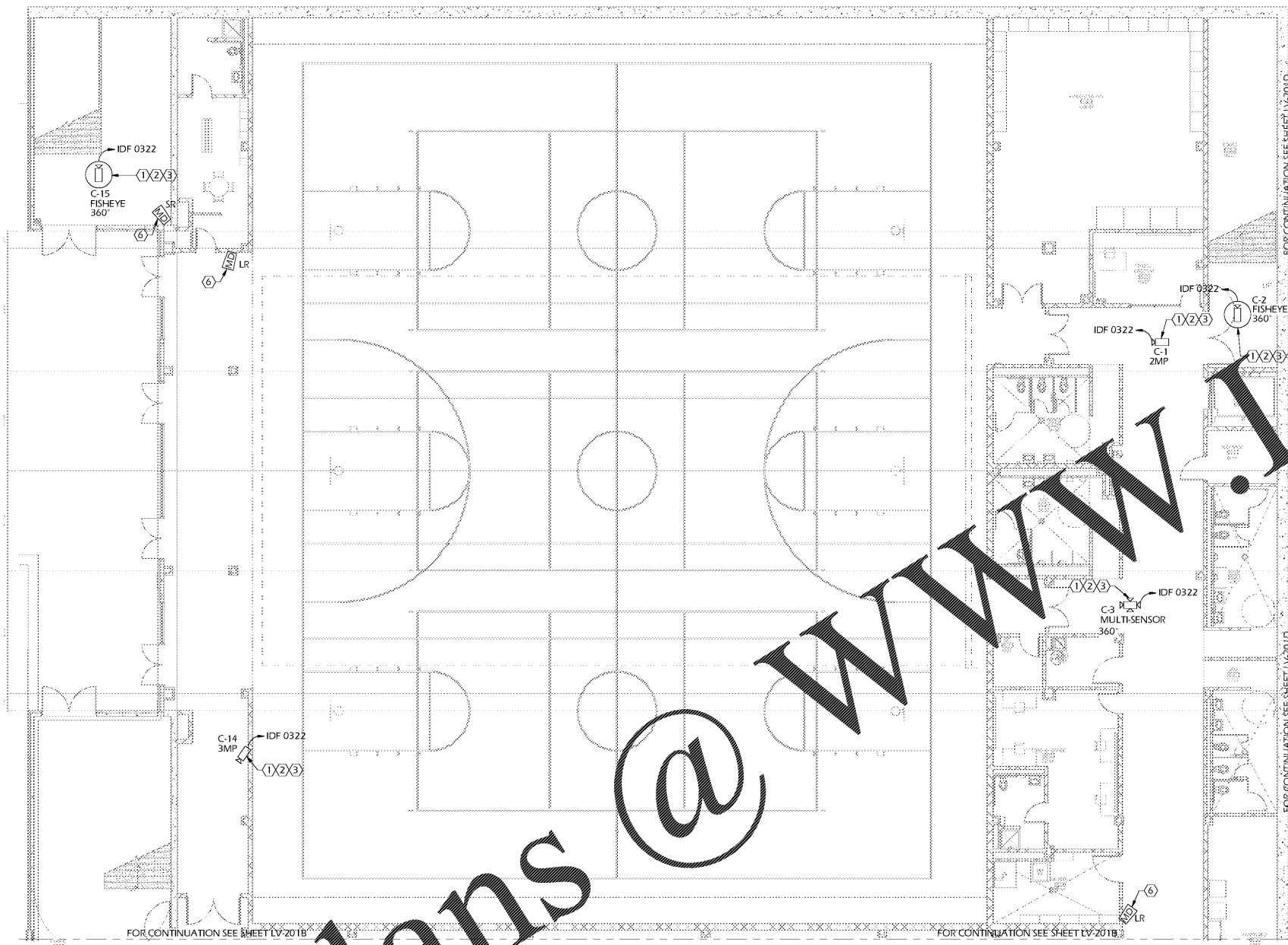


Order Plans @ www.lidline.com



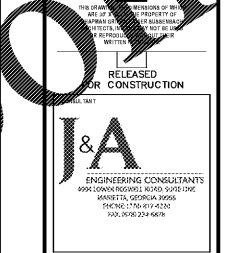
FLOOR PLAN 1 LEVEL 000 - PART 1
1/8" = 1'-0"

GENERAL NOTES:

- A. ALL VIDEO SURVEILLANCE CABLES (VIDEO SIGNAL AND POWER) SHALL BE PLENUM RATED UNLESS INSTALLED IN OUTDOOR OR UNDERGROUND RACEWAY. ALL CABLES INSTALLED IN OUTDOOR OR UNDERGROUND RACEWAY SHALL BE WET RATED.
- B. ALL VIDEO SURVEILLANCE CABLES (VIDEO SIGNAL AND POWER) SHALL BE ROUTED DIRECTLY TO VIDEO SURVEILLANCE EQUIPMENT CABINET WITHOUT SPLICES. JUNCTIONS OR SPLICES IN CABLES ARE NOT ACCEPTABLE.
- C. REFERENCE VIDEO SURVEILLANCE SCHEDULE FOR CAMERA VIEW, LENS AND MOUNTING REQUIREMENTS.
- D. ALL EXPOSED RACEWAY, INSTALLED FOR THIS PROJECT, MUST BE PAINTED TO MATCH DECOR.
- E. "WP" INDICATES THAT CAMERA MUST BE MOUNTED IN A WEATHER PROOF ENCLOSURE.
- F. ALL VIDEO SURVEILLANCE CAMERAS MUST BE CONNECTED TO THE DIGITAL VIDEO RECORDERS.
- G. ALL EXTERIOR CAMERAS MUST BE PROTECTED BY SURGE SUPPRESSION ON VIDEO SIGNAL AND POWER CABLES.
- H. ALL CAMERA VIEWS MUST BE COORDINATED WITH ADMINISTRATIVE PERSONNEL INCLUDING THE PRINCIPAL, ASSISTANT PRINCIPAL, AND RESOURCE OFFICES IF APPLICABLE.
- I. ALL CABLE SHALL BE A MINIMUM OF CAT 5E.
- J. ALL VIDEO SIGNAL CABLE SHALL BE A MINIMUM OF CAT 5E REFERENCE SPECIFICATIONS FOR MORE INFORMATION.
- K. SECURITY CONTRACTOR TO REPLACE ACOUSTICAL CEILING TILES AS REQUIRED FROM DEMOLITION OF EXISTING CAMERAS.
- L. SECURITY CONTRACTOR IS RESPONSIBLE FOR PAINTING AND PATCHING ANY HOLES IN CEILINGS OR WALLS RESULTING FROM THIS PROJECT.

GENERAL NOTES:

- ① SECURITY CONTRACTOR TO CORE HOLE IN SOLID CMU WALL FOR ROUTING OF VIDEO AND POWER CONDUITS. FIREPROOF PENETRATION TO MAINTAIN CURRENT FIRE RATING. WALL CORE HOLE TO BE CONCEALED ABOVE ACCESSIBLE CEILING. SEE DETAILS FOR CORE REQUIREMENTS. WEATHER SEAL EXTERIOR PENETRATIONS.
- ② SECURITY CONTRACTOR TO ROUTE LOW VOLTAGE SIGNAL AND POWER CABLES IN CEILING ABOVE LAY-IN TILE CEILING. ROUTE CABLES ON WALL IN CEILING SPACE SUPPORTED WITH J-HOOKS ON 4'-0" CENTERS. CABLES ARE NOT PERMITTED TO LAY UNSUPPORTED ACROSS CEILING TILES OR LIGHT FIXTURES. CABLES ARE NOT PERMITTED TO BE ROUTED DIRECTLY UNDERNEATH HVAC UNITS ABOVE CEILING.
- ③ SECURITY CONTRACTOR TO PROVIDE AND INSTALL NEW FIXED CAMERA LENS HOUSING, LOW VOLTAGE POWER, AND VIDEO SIGNAL CABLING AS DESCRIBED BY THE SPECIFICATIONS. REFERENCE CAMERA SCHEDULE FOR DESIRED FIELD OF VIEW AND LENS SIZE.
- ④ SECURITY CONTRACTOR TO PROVIDE AND INSTALL NEW MULTI-SENSOR CAMERA, LOW VOLTAGE POWER, AND VIDEO SIGNAL CABLING AS DESCRIBED BY THE SPECIFICATIONS. REFERENCE CAMERA SCHEDULE FOR DESIRED FIELD OF VIEW. COORDINATE PRESETS AND SCHEDULES WITH ADMINISTRATIVE PERSONNEL.
- ⑤ SECURITY CONTRACTOR TO PROVIDE AND INSTALL VIDEO SIGNAL AND LOW VOLTAGE POWER CABLE IN 3/4" SEALTIGHT CONDUIT FROM EXTERIOR J-BOX TO CAMERA LOCATION. CONDUIT MUST BE SECURELY STRAPPED TO WALL AND BE FASTENED PER N.E.C. REQUIREMENTS.
- ⑥ SECURITY CONTRACTOR TO PROVIDE AND INSTALL INTRUSION DETECTION DEVICES AND LOW VOLTAGE CABLE AS DESCRIBED BY THE SPECIFICATIONS. ALL NEW DEVICES SHALL BE CONNECTED TO THE EXISTING INTRUSION DETECTION PANEL AND ADDRESSABLE LOOP.
- ⑦ SECURITY CONTRACTOR TO COORDINATE EXACT LOCATION AND FIELD OF VIEW WITH FCS/PAUL HILDRETH.



DATE	NO.	DESCRIPTION
02/27/18	1	ISSUED FOR PROPOSALS
06/19/18	2	ISSUED FOR PROPOSALS
06/19/18	3	ISSUED FOR PROPOSALS
10/10/18	4	ISSUED FOR PROPOSALS
11/01/18	5	ISSUED FOR PROPOSALS

DATE	NO.	DESCRIPTION
02/27/18	1	ISSUED FOR PROPOSALS
06/19/18	2	ISSUED FOR PROPOSALS
06/19/18	3	ISSUED FOR PROPOSALS
10/10/18	4	ISSUED FOR PROPOSALS
11/01/18	5	ISSUED FOR PROPOSALS

CHAPMAN GRIFFIN LANIEF SUSENBACH ARCHITECTS
 5900 Cumberland Park Way, Suite 350, Atlanta, Ga 30339 Phone: 404.733.5493
 RIVERWOOD HIGH SCHOOL - PHASE 3-7
 AUDITORIUM/GYMNASIUM ADDITION
 5900 RAIDER DRIVE NW SANDY SPRINGS, GA 30028
 FULTON COUNTY SCHOOLS RFP NO. XXX-XX

SHEET TITLE: LEVEL 000 - PART 1
 PROJECT NO: 15099
 DATE: 06-19-18
 DRAWN BY: Author
 CHECKED BY: Checker
 SHEET NO: LV-201A

