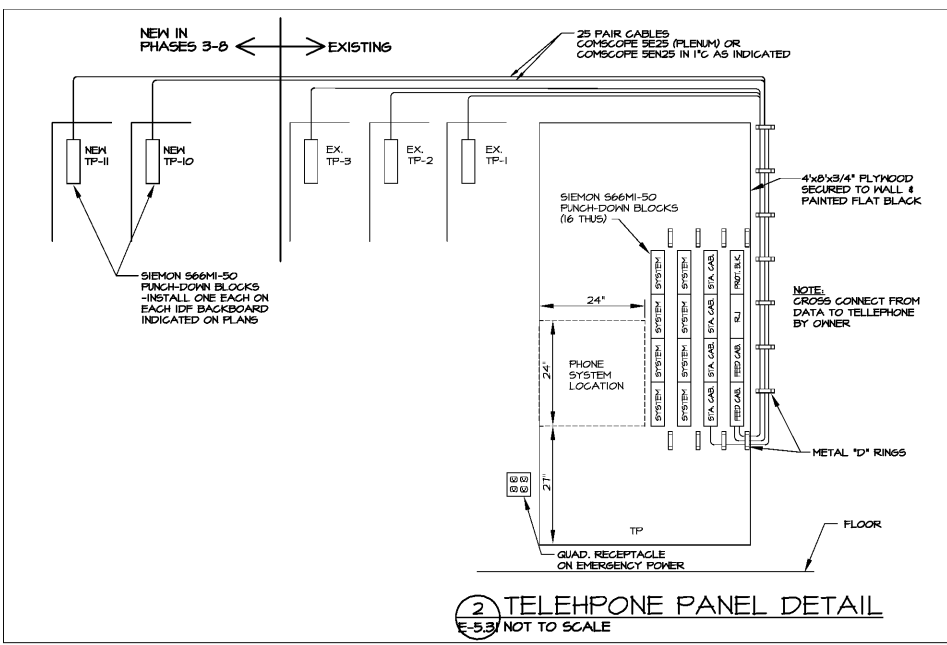
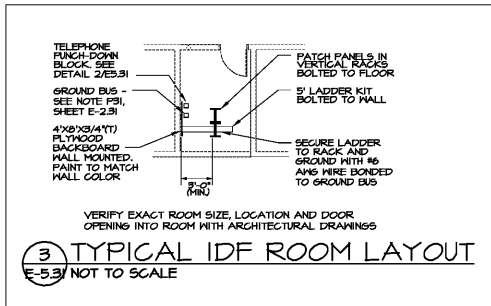


DATA CABLE LEGEND	
SYMBOL	DESCRIPTION
J	COMMSCOPE #1504 (4P/125) (DATA PATCH PANEL) & SIEMEN #166P4-AS-R/A (4P/125) (DATA PATCH PANEL) CAT 6A
L	SIEMEN #166P4-AS-R/A (4P/125) (DATA PATCH PANEL) CAT 6A
*NOTE: ALL CABLES PLENUM RATED	

PATCH CABLE LEGEND	
SYMBOL	DESCRIPTION
TP	TELEPHONE PATCH PANEL
DATA	DATA PATCH PANEL
ACCESS POINT	ACCESS POINT
SECURITY	SECURITY



1 DATA CABLE SYSTEM DETAIL
E-5.31 NOT TO SCALE

2 TELEPHONE PANEL DETAIL
E-5.31 NOT TO SCALE

- DETAIL PLAN**
- 1 26-48 CAT 6 48 PORT PATCH PANEL VERIFY ACTUAL QUANTITIES OF CABLES TO EACH PATCH PANEL. PROVIDE AS MANY 48 PORT PATCH PANELS AS REQUIRED TO MEET OR EXCEED CABLE QUANTITY.
 - 2 6-10-RM-01 CABLE MANAGERS BETWEEN PANELS
 - 3 RIG-3-48-01 FIBER CONNECTOR PANEL
 - 4 FCPS-DNR FIBER CONNECT PANEL WITH SLIDING TRAY
 - 5 CT4-PP-02 SINGLE GANG FACEPLATE
 - 6 CT-BLNK-02 BLANK COUPLER
 - 7 CT-C6-02 SINGLE COUPLER (CT-F- FOR FLOOR BOXES)

- 8 CT-C6-C6-02 DUAL COUPLER (CT-F- FOR FLOOR BOXES)
- 9 DATA CABLE - PLENUM RATED CATEGORY 6 CABLE. 4 PAIR UTP #23 SOLID WITH PINK SHEATHING (TYPE J)
- 10 RIG-F-SC6-01 THREE DUPLEX FIBER SC ADAPTERS
- 11 COMMSCOPE #P-012-DZ-5L-FSUAQ 12 STRAND FIBER OPTIC ARMORED CABLE (AQUA)
- 12 RUN #6 GROUND WIRE FROM EACH EQUIPMENT RACK TO GROUND BUS. ATTACH WITH GROUND LUGS.
- 13 CT4-BOX-02 SURFACE MOUNTED BOX WITH CT4-RING-100-02 1" STAND-OFF RING.
- 14 DATA CABLE - PLENUM RATED CATEGORY 6A CABLE. 4 PAIR STP #23 SOLID WITH PINK SHEATHING (TYPE L)
- 15 PLENUM RATED OUTLET BOX (BISCUIT) SUSPENDED FROM STRUCTURE AT 24" ABOVE CEILING

GENERAL DATA NOTE:

A. ALL DEVICE MODEL NUMBERS ARE SIEMEN COMPANY NUMBERS EXCEPT WHERE OTHER MANUFACTURERS ARE SHOWN

B. WHERE BOX IS SURFACE MOUNTED USE CT4-BOX-02 SURFACE MOUNTED BOX WITH CT4-RING-100-02 1" STAND-OFF RING.

C. PROVIDE TWO (2) SIEMEN RS-01 1" X 1/4" BLACK ALUMINUM RELAY RACKS WITH CABLE MANAGEMENT ACCESSORIES (INCLUDING LADDER RACK TO WALL, ANGLE BRACKET AND 1" BOLTS) IN EACH IDF ROOM LOCATION (PROVIDE THREE RACKS IN MDF ROOM) TO MOUNT EACH PATCH PANELS. BOLT SECURELY TO FLOOR AND WALL.

D. PROVIDE BLUE TELEPHONE ICONS AND RED COMPUTER ICONS TO INDICATE TELEPHONE AND DATA COUPLERS RESPECTIVELY.

Order Plans @ www.LDILine.com

CHAPMAN GRIFFIN LANIER SUSSENBACH ARCHITECTS

SPURLOCK ASSOCIATES, INC.

2970 Clairmont Rd., Suite 620
Atlanta, GA 30329
P: 404.633.0245
F: 404.633.1756

STATE OF GEORGIA
PROFESSIONAL ENGINEER
No. 1460
SPURLOCK

DATE	NO.	DESCRIPTION
03/27/18		ISSUE PRELIMINARY QUANTITY
04/19/18		DESIGN DEVELOPMENT
08/17/18		ISSUE CONSTRUCTION DOCUMENTS
08/17/18		ISSUE SIEMEN-SC/PERMIT SET
09/17/18		FINAL ISSUE SUBMITTAL
11/02/18		ISSUE FOR PROPOSALS

DOE FACILITY CODE: 660 - 3066

RIVERWOOD HIGH SCHOOL-PHASE 3-8
AUDITORIUM / GYMNASIUM ADDITION

5900 RAIDER DRIVE NW SANDY SPRINGS, GA 30328
FULTON COUNTY SCHOOLS RFP NO. 411-19

SHEET TITLE

DATA CABLE SYSTEM DETAILS

PROJECT NO. 18015.02

DATE 09/17/18

SCALE BY: GTR
CHECKED BY: BLS

SHEET NO. **E-5.31**