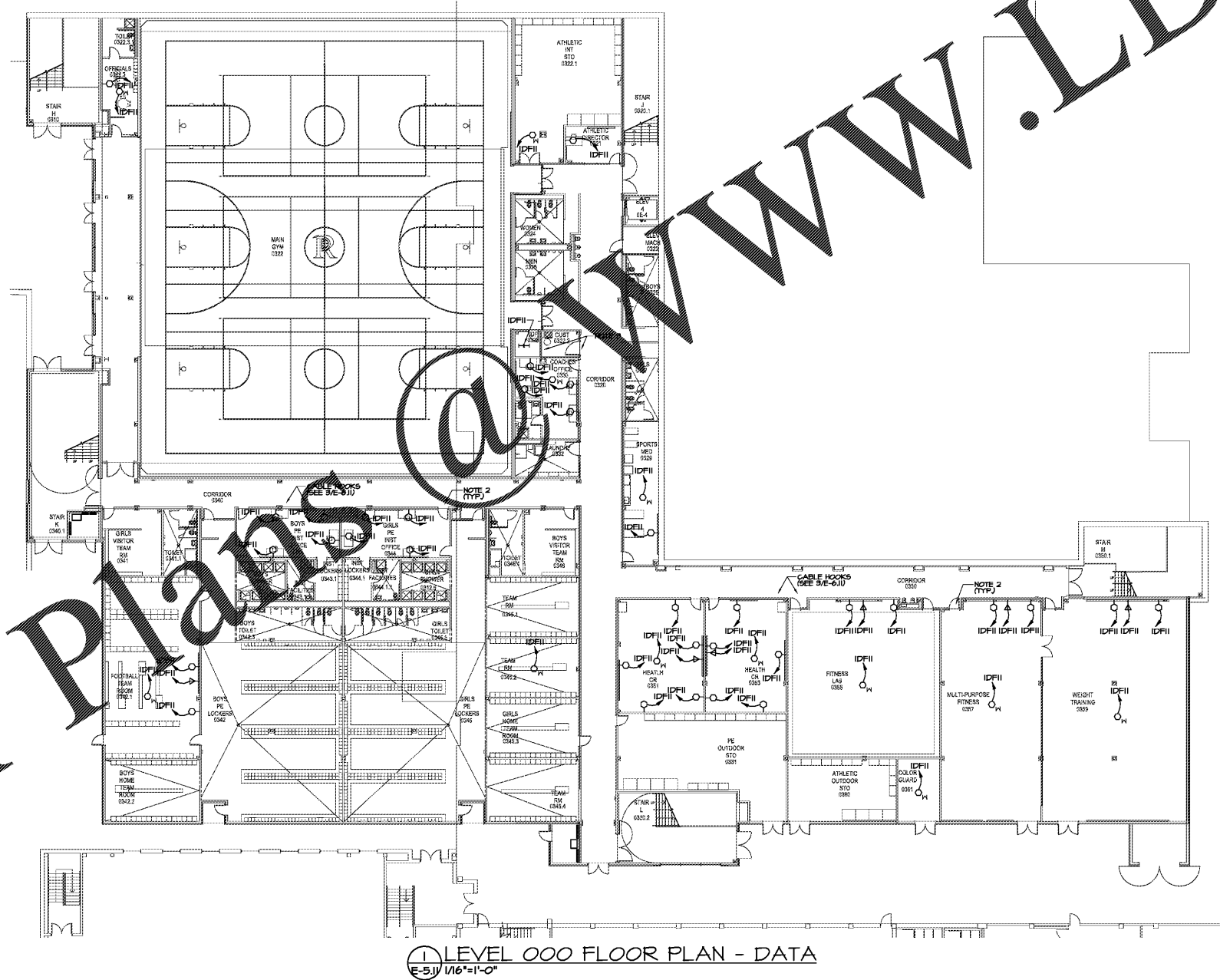
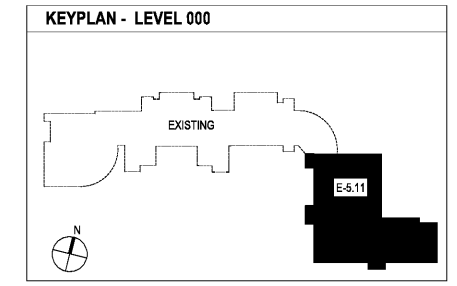


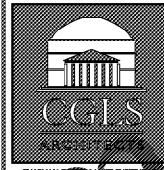
Order Plans




- REFERENCED NOTES:** (APPLIES TO E-5.11 THRU E-5.21)
- WHERE CABLES PASS THROUGH FIRE WALLS FROM CABLE HANGERS ON EACH SIDE, INSTALL THREE 3" CONDUIT SLEEVES WITH BUSHINGS ON BOTH SIDES. FIRE STOP AFTER ALL CABLES ARE INSTALLED.
 - WHERE CABLES PASS THROUGH FIRE WALLS TO INDIVIDUAL ROOMS, INSTALL (3) 1" CONDUIT SLEEVES WITH BUSHINGS ON BOTH SIDES, 1 FOR DATA, 1 FOR INTERCOM, 1 FOR ALL OTHERS. FIRE STOP AFTER ALL CABLES ARE INSTALLED.
 - WHERE CABLES PASS THRU FIRE WALLS FROM CABLE HANGERS IN TO IDF ROOM, INSTALL TWO 3" CONDUIT SLEEVES WITH BUSHINGS ON BOTH ENDS. FIRE STOP AFTER ALL CABLES ARE INSTALLED.
 - PROVIDE (2) 4" CONDUIT FROM IDF 0216 TO FUTURE LOCATION OF MODULAR TRAILERS. STUD CONDUIT UP INTO ABOVE GROUND BOX AND CAP. SEE SITE PLAN FOR APPROXIMATE LOCATION. COORDINATE EXACT LOCATION WITH OWNER. SEE SPECIFICATIONS FOR FULLBOXES, DO NOT USE 90 DEGREE ELBOWS.



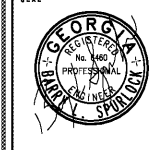
1 LEVEL 000 FLOOR PLAN - DATA
E-5.11 1/16"=1'-0"



CHAPMAN GRIFFIN LANIER SUSSENBACH ARCHITECTS



2970 Clairmont Rd., Suite 420
Atlanta, GA 30329
P: 404.633.0245
F: 404.633.1756



DATE	NO.	DESCRIPTION
03/27/18		ISSUE PRELIMINARY QUANTITIES
05/19/18		ISSUE PRELIMINARY DESIGN DEVELOPMENT DOCUMENTS
08/17/18		ISSUE CHECKLIST-SC/PERMIT SET
07/19/18		FINAL ISSUE SUBMITTAL
11/07/18		ISSUED FOR PROPOSALS

RIVERWOOD HIGH SCHOOL-PHASE 3-8
AUDITORIUM / GYMNASIUM ADDITION

5900 RAIDER DRIVE NW SANDY SPRINGS, GA 30328
FULTON COUNTY SCHOOLS RFP NO. 411-19

DOE FACILITY CODE: 660 -3066
SHEET TITLE
LEVEL 000 FLOOR PLAN - DATA
PROJECT NO. 18015.02
DATE 09/17/18
DRAWN BY: G.T.R. CHECKED BY: B.L.S.
SHEET NO.
E-5.11