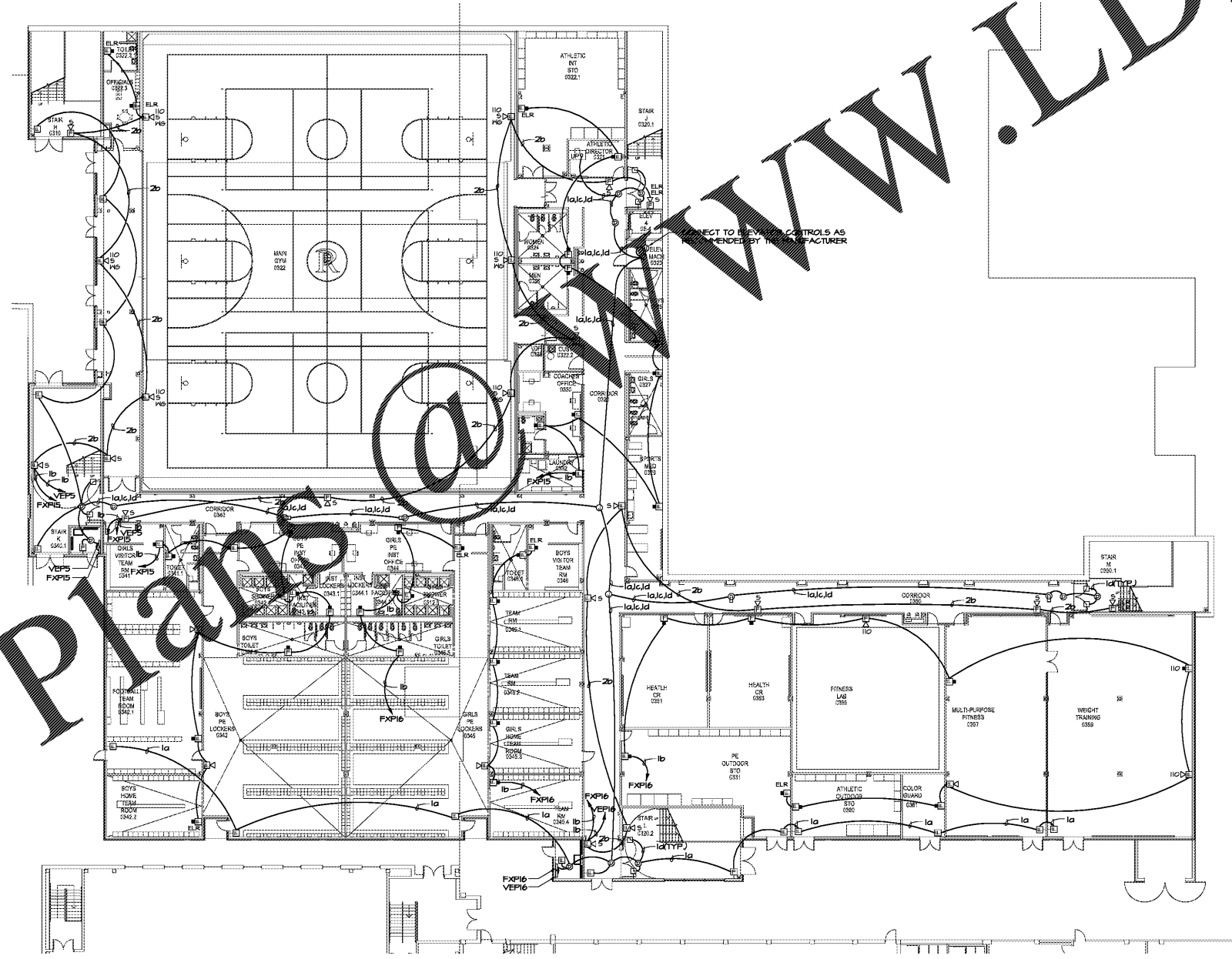


Order Plans



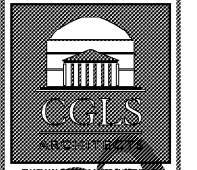
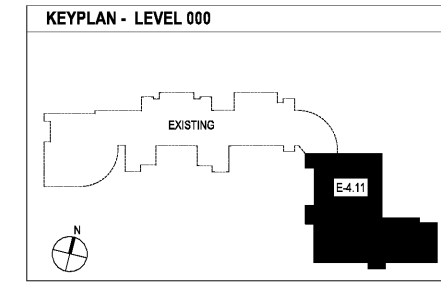
1 LEVEL 000 FLOOR PLAN - FIRE ALARM
E-4.11 1/16"=1'-0"

FIRE ALARM WIRE LEGEND	
SYMBOL	DESCRIPTION
d	2W4 THRESHOLD WEST PENN #25HT5 (COMM) (RED)
b	2W2 SHLD (SIGNAL) WEST PENN #60R14 (RED)
c	2W4 SHLD (MAGNET POWER) WEST PENN #60R12 (RED)
d	2W4 SHLD (DOOR HOLDER POWER) WEST PENN #60R12 (RED)
ELR	END OF LINE RESISTOR
NOTE: ALL CABLE IS FLEMING RATED	

FIRE ALARM - SCOPE OF WORK:
EXTEND EXISTING NOTIFIER ADDRESSABLE FIRE ALARM SYSTEM INTO NEW ADDITION. INSTALL NEW DEVICES AS SHOWN.

- GENERAL FIRE ALARM NOTES:**
(APPLIES TO E-4.11 THRU E-4.21)
- FIRE ALARM SYSTEM TO BE PROVIDED IN ACCORDANCE WITH THE FULTON COUNTY FIRE PROTECTION AND LIFE SAFETY ORDINANCE. FIRE ALARM CONTRACTOR SHALL OBTAIN A FIRE ALARM SYSTEM PERMIT FROM THE SANDY SPRINGS FIRE MARSHAL'S OFFICE PRIOR TO INSTALLATION.
 - CONTRACTOR TO VERIFY ROOM NUMBER AND NAMES PRIOR TO PROGRAMMING FIRE ALARM SYSTEM.
 - MOUNT EXTENDER PANELS AT LEAST 2' ABOVE FLOOR BUT NOT GREATER THAN 5' ABOVE FLOOR.
 - SEE LEGEND ON SHEET E6.11 FOR FIRE DEVICE SYMBOLS.
 - SEE SPECIFICATIONS SECTION 1650 FOR ADDITIONAL REQUIREMENTS OF FIRE ALARM SYSTEM.

- REFERENCED FIRE ALARM NOTES:**
(APPLIES TO E-4.11 THRU E-4.21)
- CONNECT NEW DEVICES TO THE EXISTING NOTIFIER NFS-320 ADDRESSABLE FIRE ALARM SYSTEM LOCATED IN FRONT OFFICE.



CHAPMAN GRIFFIN LANIER SUSSENBACH ARCHITECTS
5900 RAIDER DRIVE NW SANDY SPRINGS, GA 30328
TEL: 404.733.5492 FAX: 404.733.6804



2970 Clairmont Rd., Suite 420
Atlanta, GA 30329
P: 404.633.0245
F: 404.633.1756



DATE	NO.	DESCRIPTION
03/27/18		ISSUE PRELIMINARY QUANTITIES
04/19/18		DESIGN DEVELOPMENT
04/17/18		ISSUE CONSTRUCTION DOCUMENTS
04/17/18		ISSUE CHECKLIST-SC/ PERMIT SET
04/17/18		FINAL ISSUE SUBMITTAL
11/01/18		ISSUE FOR PROPOSALS

**RIVERWOOD HIGH SCHOOL-PHASE 3-8
AUDITORIUM / GYMNASIUM ADDITION**
5900 RAIDER DRIVE NW SANDY SPRINGS, GA 30328
FULTON COUNTY SCHOOLS RFP NO. 411-19

SHEET TITLE
LEVEL 000
FLOOR PLAN -
FIRE ALARM

PROJECT NO.
18015.02

DATE
09/17/18

DRAWN BY: GTR
CHECKED BY: BLS

SHEET NO.
E-4.11