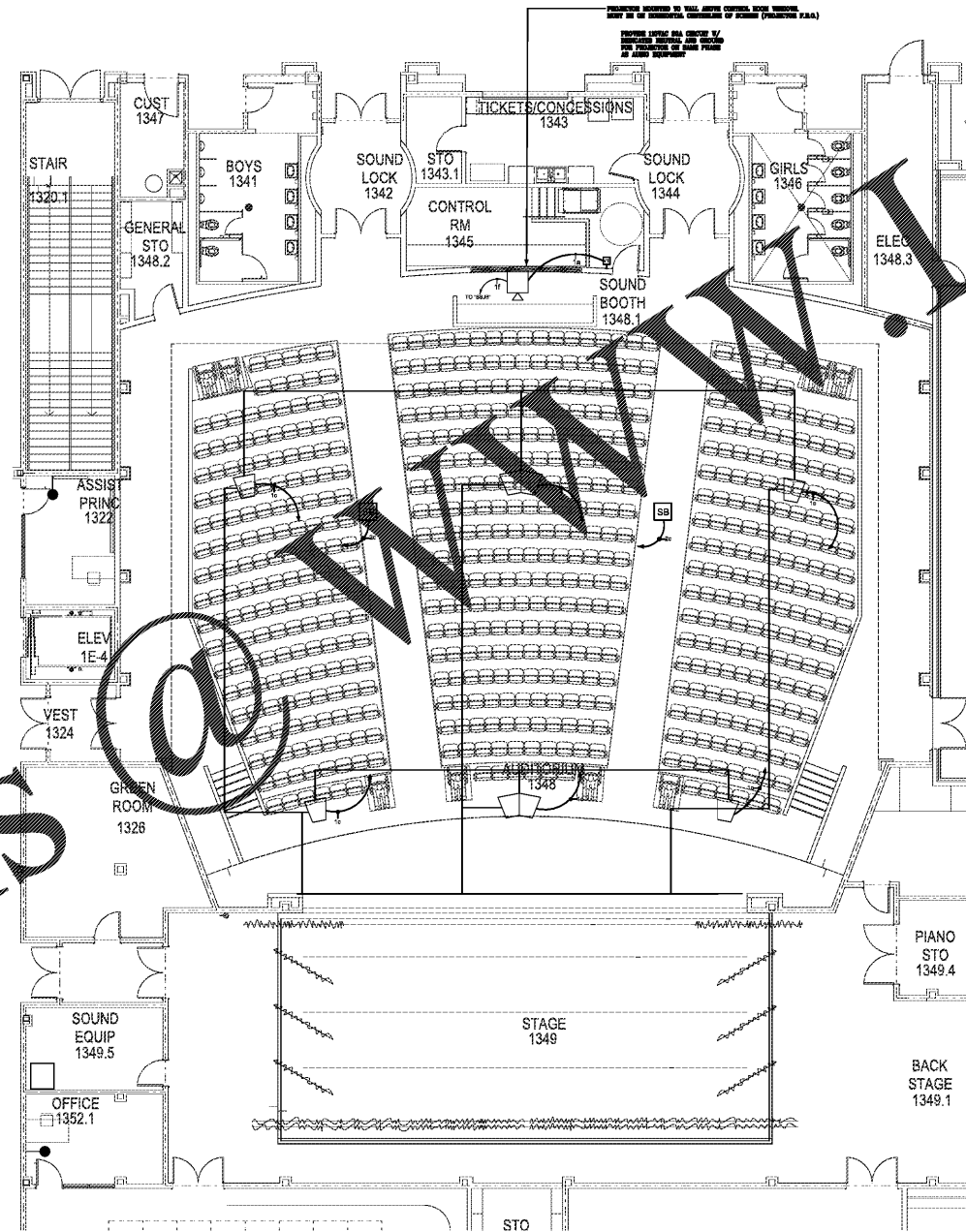
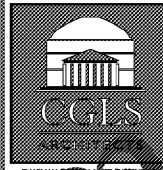
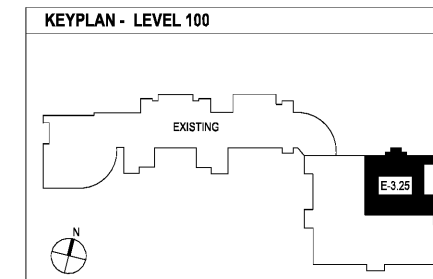


Order Plans @ WWW.WALDLine.com



1 THEATER SOUND SYSTEM PLAN
E3.25 1/8"=1'-0"



CGLS ARCHITECTS
CHAPMAN GRIFFIN LANIER SUSSENBACH ARCHITECTS
INC.



SPURLOCK ASSOCIATES, INC.
2970 Clairmont Rd., Suite 420
Atlanta, GA 30329
P: 404.633.0245
F: 404.633.1756



DATE	NO.	DESCRIPTION
03/27/18		CODE PRELIMINARY
04/19/18		DESIGN DEVELOPMENT
08/17/18		FOR CONSTRUCTION DOCUMENTS
09/17/18		FOR PERMIT SET
10/10/18		FINAL CODE SUBMITTAL
11/07/18		ISSUED FOR PROPOSALS

**RIVERWOOD HIGH SCHOOL-PHASE 3-8
AUDITORIUM / GYMNASIUM ADDITION**
6900 RAIDER DRIVE NW SANDY SPRINGS, GA 30328
FULTON COUNTY SCHOOLS RFP NO. 411-19

**LEVEL 100
FLOOR PLAN -
THEATER
SOUND
SYSTEM**

PROJECT NO. 18015.02

DATE 09/17/18

DRAWN BY: G.T.R.
CHECKED BY: B.L.S.

SHEET NO. **E-3.25**