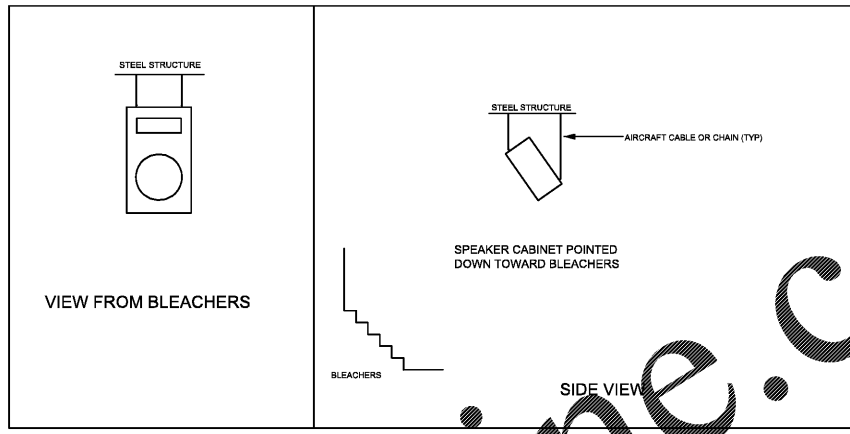
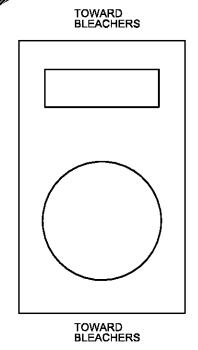


1 LEVEL 100 FLOOR PLAN - INTERCOM
E-3.23 1/16"=1'-0"

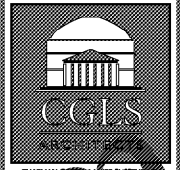
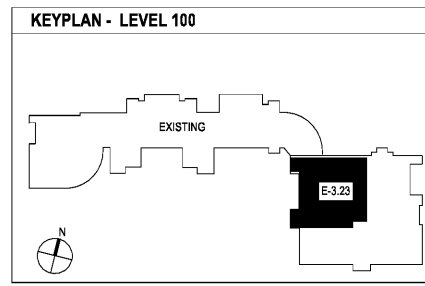


SPEAKER ORIENTATION AT BLEACHERS

NOTE: AIRCRAFT CABLE OR CHAIN MUST BE RATED A MINIMUM OF 5 TIMES GREATER THAN LOAD (85 LBS.)



CENTER CABINETS POINT STRAIGHT DOWN AT FLOOR



CHAPMAN GRIFFIN LANIER SUSSENBACH ARCHITECTS
INC.

REGISTERED PROFESSIONAL ARCHITECTS
OR CONSTRUCTION CONSULTANTS

SPURLOCK ASSOCIATES, INC.
2970 Clairmont Rd., Suite 420
Atlanta, GA 30329
P: 404.633.0245
F: 404.633.1756



DATE	NO.	DESCRIPTION
03/27/18		ISSUE PRELIMINARY SCHEDULE
04/19/18		DESIGN DEVELOPMENT DOCUMENTS
08/17/18		ISSUE CONSTRUCTION DOCUMENTS
08/17/18		ISSUE CHECKLIST - SC/ PERMIT SET
09/17/18		FINAL ISSUE SUBMITTAL
11/02/18		ISSUE FOR PROPOSALS

DOE FACILITY CODE: 660 -3066
RIVERWOOD HIGH SCHOOL-PHASE 3-8 AUDITORIUM / GYMNASIUM ADDITION
5900 RAIDER DRIVE NW SANDY SPRINGS, GA 30328
FULTON COUNTY SCHOOLS RFP NO. 411-19

PROJECT TITLE
LEVEL 100 FLOOR PLAN - GYMNASIUM SOUND SYSTEM

PROJECT NO.
18015.02

DATE
09/17/18

DRAWN BY: GTR
CHECKED BY: BLS

SHEET NO.
E-3.23

CHAPMAN GRIFFIN LANIER SUSSENBACH ARCHITECTS
5800 GRANTVILLE PARKWAY, SUITE 100, ATLANTA, GEORGIA 30328 • PHONE: 404.733.5492 • FAX: 404.733.6804