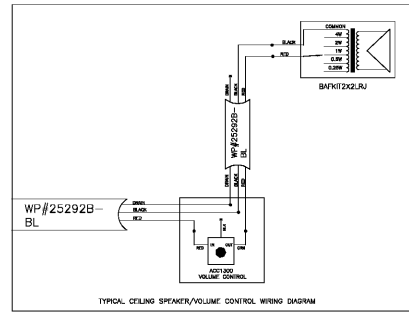
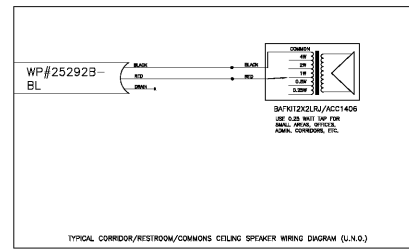


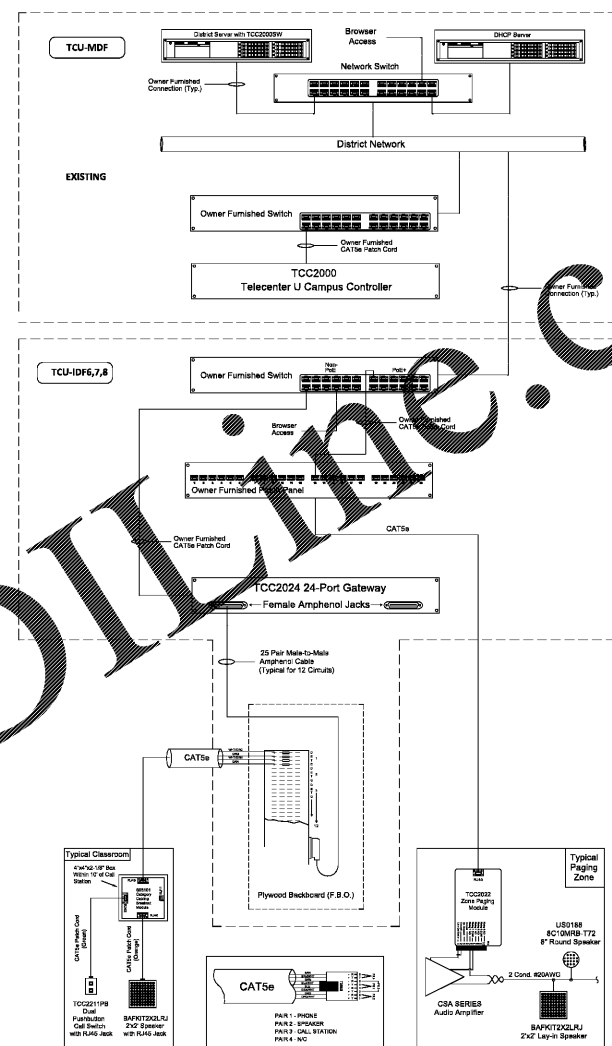
5 TYPICAL CLASSROOM INTERCOM WIRING
E-3.11 NOT TO SCALE



4 TYPICAL PAGING SPEAKER W/
VOLUME CONTROL WIRING DIAGRAM
E-3.11 NOT TO SCALE



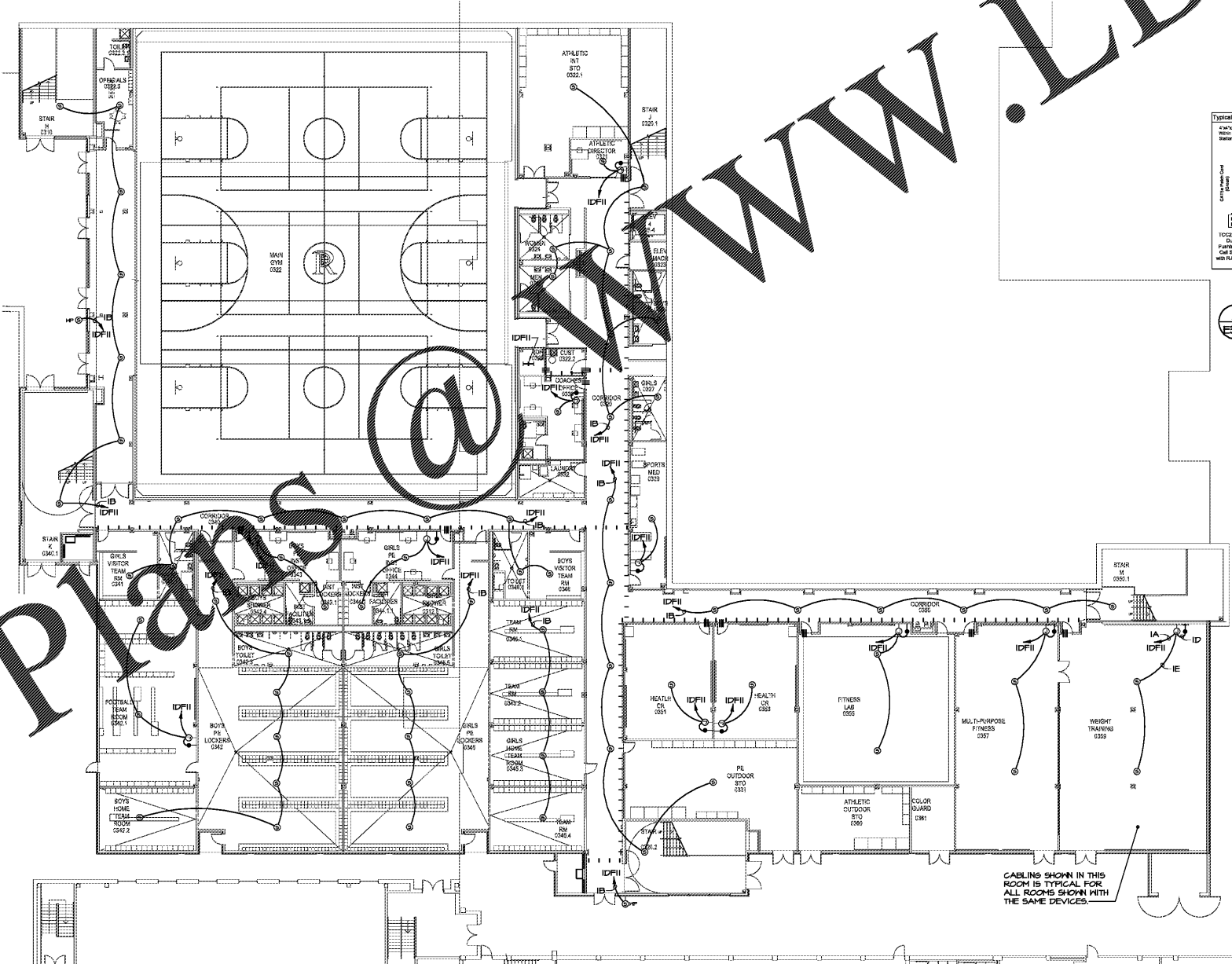
3 TYPICAL PAGING
SPEAKER WIRING DIAGRAM
E-3.11 NOT TO SCALE



2 SCHOOL WIDE INTERCOM WIRING
E-3.11 NOT TO SCALE

DEVICE LEGEND:

- ⊙ TILE CEILING MOUNTED SPEAKER
BAFKIT2XL2RJ 2'x2' LAY-IN SPEAKER ASSEMBLY
- ⊙ GYPSUM CEILING MOUNTED SPEAKER ASSEMBLY
ACC1406 SPEAKER/BAFFLE
ACC1110 RECESSED CEILING SPEAKER BACK BOX
(BACK BOX FURNISHED BY SWC & INSTALLED BY GSD)
- ⊙ SURFACE CEILING MOUNTED SPEAKER ASSEMBLY
US0188 8" 25/70V SPEAKER
ACC1003 INTERIOR SQUARE SPEAKER BAFFLE
ACC1112 INTERIOR SURFACE SPEAKER BACK BOX
(BACK BOX FURNISHED BY SWC & INSTALLED BY GSD)
- ⊙ EXTERIOR FLUSH WALL MOUNTED SPEAKER ASSEMBLY
BC10MRB-172 8" 25/70V MOISTURE-RESISTANT SPEAKER
SG-BVP VANDAL-RESISTANT SQUARE SPEAKER GRILLE
F68X RECESSED WALL SPEAKER BACK BOX
(BACK BOX FURNISHED BY SWC & INSTALLED BY GSD)
(VERIFY MOUNTING HEIGHT WITH ARCHITECT PRIOR TO ROUG-IN)
- CALL STATION
TCC2211PB DUAL PUSHBUTTON CALL SWITCH
REQUIRES SINGLE GANG BOX (RACO 674 OR EQUAL)
(BACK BOX FURNISHED & INSTALLED BY GSD)
(VERIFY MOUNTING HEIGHT WITH ARCHITECT PRIOR TO ROUG-IN)
- ⊙ WALL MOUNTED SPEAKER VOLUME CONTROL
ACC1300 10W AREA SPEAKER VOLUME CONTROL
REQUIRES SINGLE GANG BOX (RACO 674 OR EQUAL)
(BACK BOX FURNISHED & INSTALLED BY GSD)
(VERIFY MOUNTING HEIGHT WITH ARCHITECT PRIOR TO ROUG-IN)
- ⊙ CATEGORY CABLE BREAKOUT MODULE
603101 BREAKOUT MODULE
REQUIRES TP434 4" SQUARE BOX WITH TP472 COVER PLATE
WALL MOUNTED AFC WITHIN 10'-0" OF CALL STATION.
(BOX/COVER PLATE FURNISHED & INSTALLED BY SWC)
- ⊙ TANNOY CV56 FLUSH CEILING SPEAKER ASSEMBLY
SET TAP FOR 7.5W 70V
- ⊙ MICROPHONE INPUT JACK PLATE
PROCO TYPE A REQUIRES SINGLE GANG BOX
AT OUTLET HEIGHT
- PA(●) SINGLE CHANNEL AUDIO PAGING AMPLIFIER
CSA1407 1/2 R.U. RACK MOUNTED AMPLIFIER
REQUIRES TCC2022 ZONE PAGE MODULE AND
1EA. POE PORT ON OWNER FURNISHED NETWORK SWITCH.
(● DENOTES AMPLIFIER IN MDF/IDF)
- PA(●)-X DUAL CHANNEL AUDIO PAGING AMPLIFIER
CSA2407 1/2 R.U. RACK MOUNTED AMPLIFIER
REQUIRES 2EA. TCC2022 ZONE PAGE MODULES AND
2EA. POE PORTS ON OWNER FURNISHED NETWORK SWITCH.
(● DENOTES AMPLIFIER, X DENOTES CHANNEL IN MDF/IDF)
- EXIST. TCC2022 TELECENTER U CAMPUS ZONE PAGING MODULE
TCC2033(x5) TELECENTER U CAMPUS AUXILIARY I/O MODULE
TCC2099(x2) UNIVERSAL RACK MOUNTING KIT
(COORDINATE RACK SPACE REQUIREMENTS WITH OWNER)
- EXIST. MDF TCC2000 TELECENTER U CAMPUS CONTROLLER
TCC2024 TWENTY FOUR PORT GATEWAY
TCC2022(x4) TELECENTER U CAMPUS ZONE PAGING MODULE
TCC2033 TELECENTER U CAMPUS AUXILIARY I/O MODULE
TCC2099(x2) UNIVERSAL RACK MOUNTING KIT
CSA1407(x2) SINGLE CHANNEL AUDIO PAGING AMPLIFIER
CSA2407 DUAL CHANNEL AUDIO PAGING AMPLIFIER
(COORDINATE RACK SPACE REQUIREMENTS WITH OWNER)
- IDF6 TCC2024 TWENTY FOUR PORT GATEWAY
TCC2022 TELECENTER U CAMPUS ZONE PAGING MODULE
TCC2099 UNIVERSAL RACK MOUNTING KIT
CSA1407 SINGLE CHANNEL AUDIO PAGING AMPLIFIER
CSA2407 DUAL CHANNEL AUDIO PAGING AMPLIFIER
(COORDINATE RACK SPACE REQUIREMENTS WITH OWNER)
- IDF7 TCC2024 TWENTY FOUR PORT GATEWAY
TCC2022 TELECENTER U CAMPUS ZONE PAGING MODULE
TCC2099 UNIVERSAL RACK MOUNTING KIT
CSA1407 SINGLE CHANNEL AUDIO PAGING AMPLIFIER
CSA2407 DUAL CHANNEL AUDIO PAGING AMPLIFIER
(COORDINATE RACK SPACE REQUIREMENTS WITH OWNER)
- IDF9 TCC2024 TWENTY FOUR PORT GATEWAY
TCC2022 TELECENTER U CAMPUS ZONE PAGING MODULE
TCC2099 UNIVERSAL RACK MOUNTING KIT
CSA1407 SINGLE CHANNEL AUDIO PAGING AMPLIFIER
CSA2407 DUAL CHANNEL AUDIO PAGING AMPLIFIER
(COORDINATE RACK SPACE REQUIREMENTS WITH OWNER)

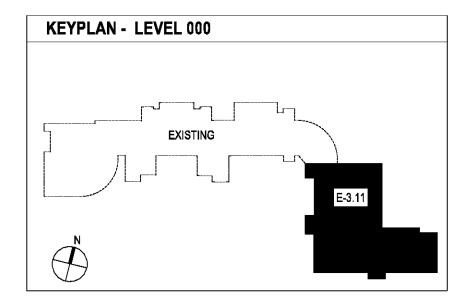


1 LEVEL 000 FLOOR PLAN - INTERCOM
E-3.11 1/16"=1'-0"

CABLE LEGEND	
SYMBOL	DESCRIPTION
A	WP #254245-BL CAT5E HOME RUN (BLUE)
B	WP #254245-BL 2'x2' THRU/BLD. CORR./EXT./COMMON (BLUE)
C	WEST PENN #201 CAFETERIA SOUND SYSTEM
D	WP #CA-254245M-15 15' BREAKOUT TO CALL STATION (GREEN)
E	WP #CA-254245OR-35 35' BREAKOUT TO SPEAKER (ORANGE)
F	WEST PENN #224 MICROPHONE

*NOTE: ALL CABLES ARE PLENUM RATED

- NOTES: (APPLIES TO E-3.11 THRU E-3.21)
- ALL NETWORK RACKS, SWITCHES, PATCH PANELS, CORDS, CABLE MANAGEMENT, POWER, BACKBOARDS AND UPS SYSTEMS ARE FURNISHED BY THE OWNER.
 - THE NETWORKED INTERCOM SYSTEM WILL BE INTEGRATED TO THE OWNER'S TELEPHONE SYSTEM VIA SIP CONNECTION. COORDINATE THE NETWORK CONFIGURATION WITH THE OWNER.



CHAPMAN GRIFFIN LANIER SUSSENBACH ARCHITECTS

DOE FACILITY CODE: 660-3066

RIVERWOOD HIGH SCHOOL-PHASE 3-B
AUDITORIUM / GYMNASIUM ADDITION

5900 RAIDER DRIVE NW SANDY SPRINGS, GA 30328
FULTON COUNTY SCHOOLS RFP NO. 411-19

PROJECT NO. 16015.02

DATE 09/17/18

DRAWN BY: GTR
CHECKED BY: BLS

SHEET NO. **E-3.11**