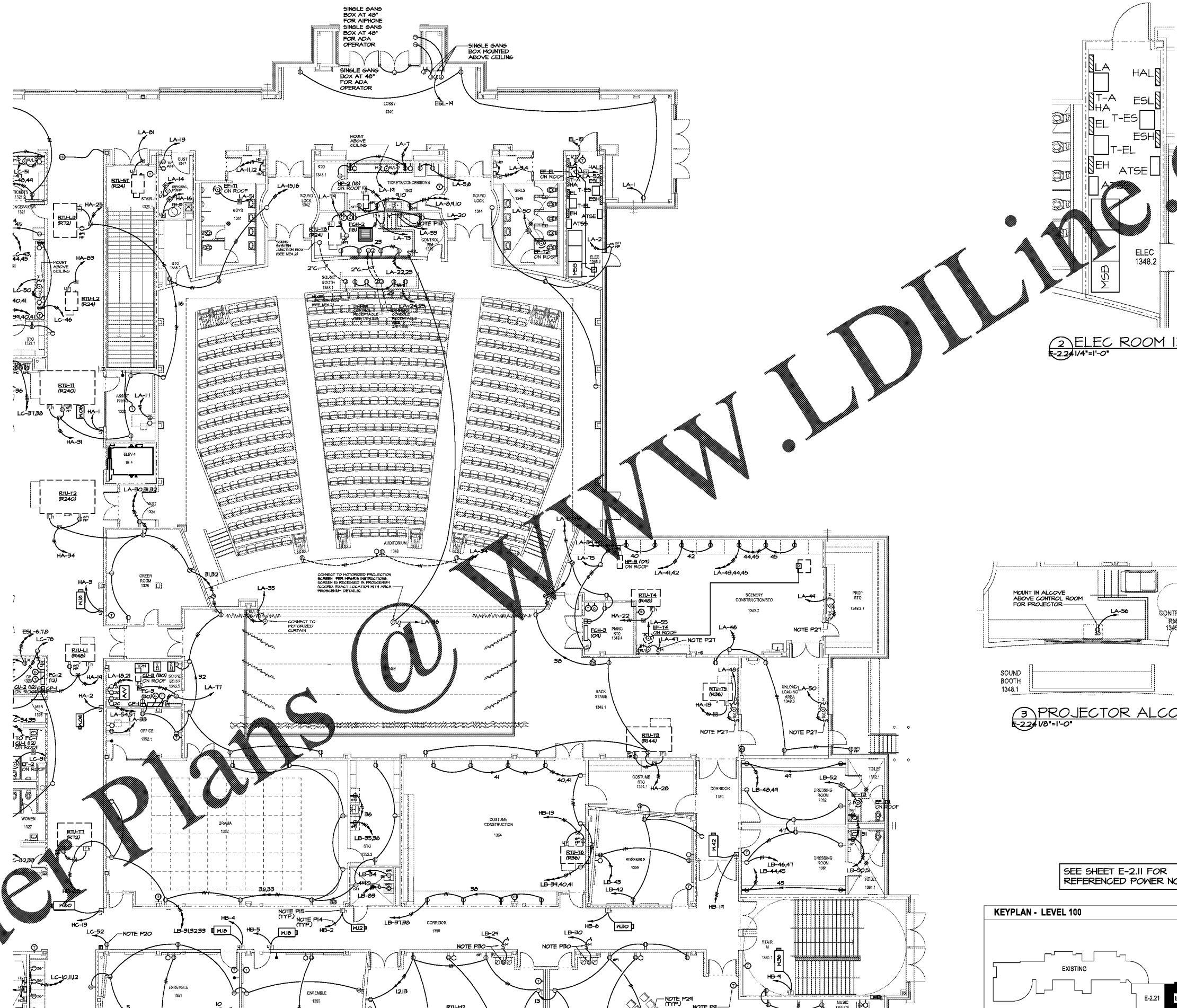
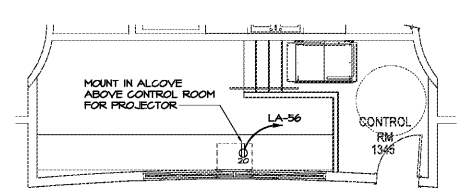


Order Plans @

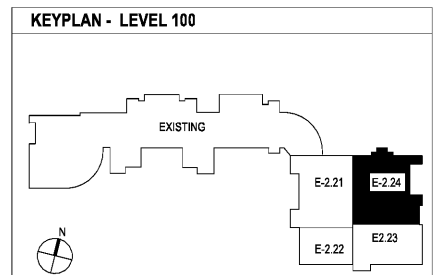


2 ELEC ROOM 1348.2
E-2.24 1/4"=1'-0"

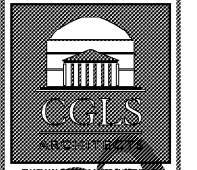


3 PROJECTOR ALCOVE
E-2.24 1/8"=1'-0"

SEE SHEET E-2.11 FOR REFERENCED POWER NOTES.



1 LEVEL 100 FLOOR PLAN - PART 4- POWER
E-2.24 1/8"=1'-0"



2970 Clairmont Rd., Suite 420
Atlanta, GA 30329
P: 404.633.0245
F: 404.633.1756



DATE	NO.	DESCRIPTION
03/27/18		ISSUE PRELIMINARY SCHEDULE
04/19/18		ISSUE PRELIMINARY DESIGN DEVELOPMENT DOCUMENTS
08/17/18		ISSUE PRELIMINARY PERMIT SET
09/17/18		ISSUE PRELIMINARY PERMIT SET
11/07/18		ISSUE PRELIMINARY PERMIT SET
11/07/18		ISSUE PRELIMINARY PERMIT SET

DOE FACILITY CODE: 660 -3066
**RIVERWOOD HIGH SCHOOL-PHASE 3-8
 AUDITORIUM / GYMNASIUM ADDITION**
 5900 RAIDER DRIVE NW SANDY SPRINGS, GA 30328
 FULTON COUNTY SCHOOLS RFP NO. 411-19

SHEET TITLE	
LEVEL 100 FLOOR PLAN-PART 4-POWER	
PROJECT NO.	18015.02
DATE	09/17/18
DRAWN BY	GTR
CHECKED BY	BLS
SHEET NO.	
E-2.24	