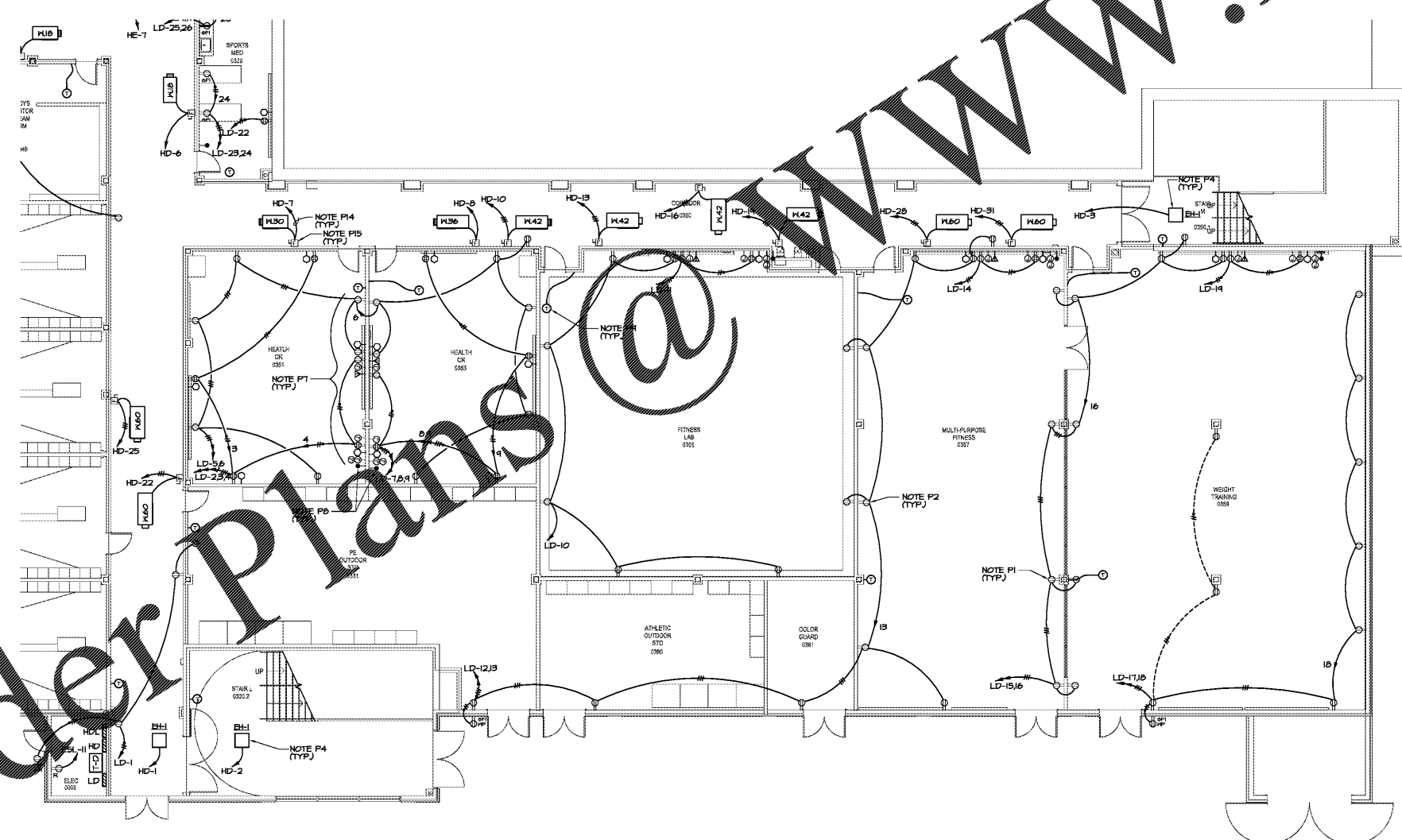
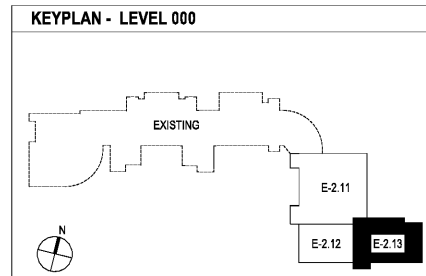


Order Plans @ WWW.LDILine.com

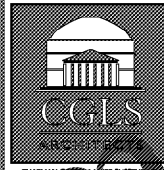


2 ELEC ROOM 005
E-2.13 1/4"=1'-0"


SEE SHEET E-2.11 FOR REFERENCED POWER NOTES.




1 LEVEL 000 FLOOR PLAN - PART 3 - POWER
E-2.13 1/8"=1'-0"



CHAPMAN GRIFFIN LANIER SUSSENBACH ARCHITECTS



2970 Clairmont Rd., Suite 420
Atlanta, GA 30329
P: 404.633.0245
F: 404.633.1756



DATE	NO.	DESCRIPTION
03/27/18		DOE PRELIMINARY SUBMITTAL
08/19/18		DOE DESIGN DEVELOPMENT DOCUMENTS
08/17/18		DOE CHECKLIST - SC/ PERMIT SET
09/17/18		FINAL DOE SUBMITTAL
11/07/18		ISSUED FOR PROPOSALS

DOE FACILITY CODE: 660 -3066

RIVERWOOD HIGH SCHOOL-PHASE 3-8 AUDITORIUM / GYMNASIUM ADDITION

5900 RAIDER DRIVE NW SANDY SPRINGS, GA 30328
FULTON COUNTY SCHOOLS RFP NO. 411-19

PROJECT NO.	18015.02
DATE	09/17/18
DRAWN BY	GTR
CHECKED BY	BLS
SHEET NO.	E-2.13