

CHAPMAN GRIFFIN LANIER SUSENBACH ARCHITECTS
1000 GOLFVIEW PARKWAY, SUITE 100 • ATLANTA, GEORGIA 30328 • PHONE: 404.733.5492 • FAX: 404.733.6806

FOR RELEASE OR CONSTRUCTION
REGULATORY
SPURLOCK ASSOCIATES, INC.
2970 Clairmont Rd., Suite 420
Atlanta, GA 30329
P: 404.633.0245
F: 404.633.1756



DATE	NO.	DESCRIPTION
03/27/18		ISSUE PRELIMINARY QUANTITIES
04/19/18		ISSUE PRELIMINARY DESIGN DEVELOPMENT
04/17/18		ISSUE CONSTRUCTION DOCUMENTS
04/17/18		ISSUE CONSTRUCTION PERMIT SET
11/02/18		FINAL ISSUE SUBMITTAL ISSUED FOR PERMITS

DOE FACILITY CODE: 660-3066
**RIVERWOOD HIGH SCHOOL-PHASE 3-B
 AUDITORIUM / GYMNASIUM ADDITION**
 5900 RAIDER DRIVE NW SANDY SPRINGS, GA 30328
 FULTON COUNTY SCHOOLS RFP NO. 411-19

SHEET TITLE
**LEVEL 000
 FLOOR PLAN-
 PART 1-
 POWER**

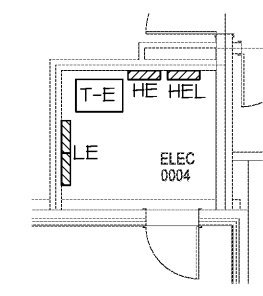
PROJECT NO.
16015.02

DATE
09/17/18

DRAWN BY
G.T.R.

CHECKED BY
B.L.S.

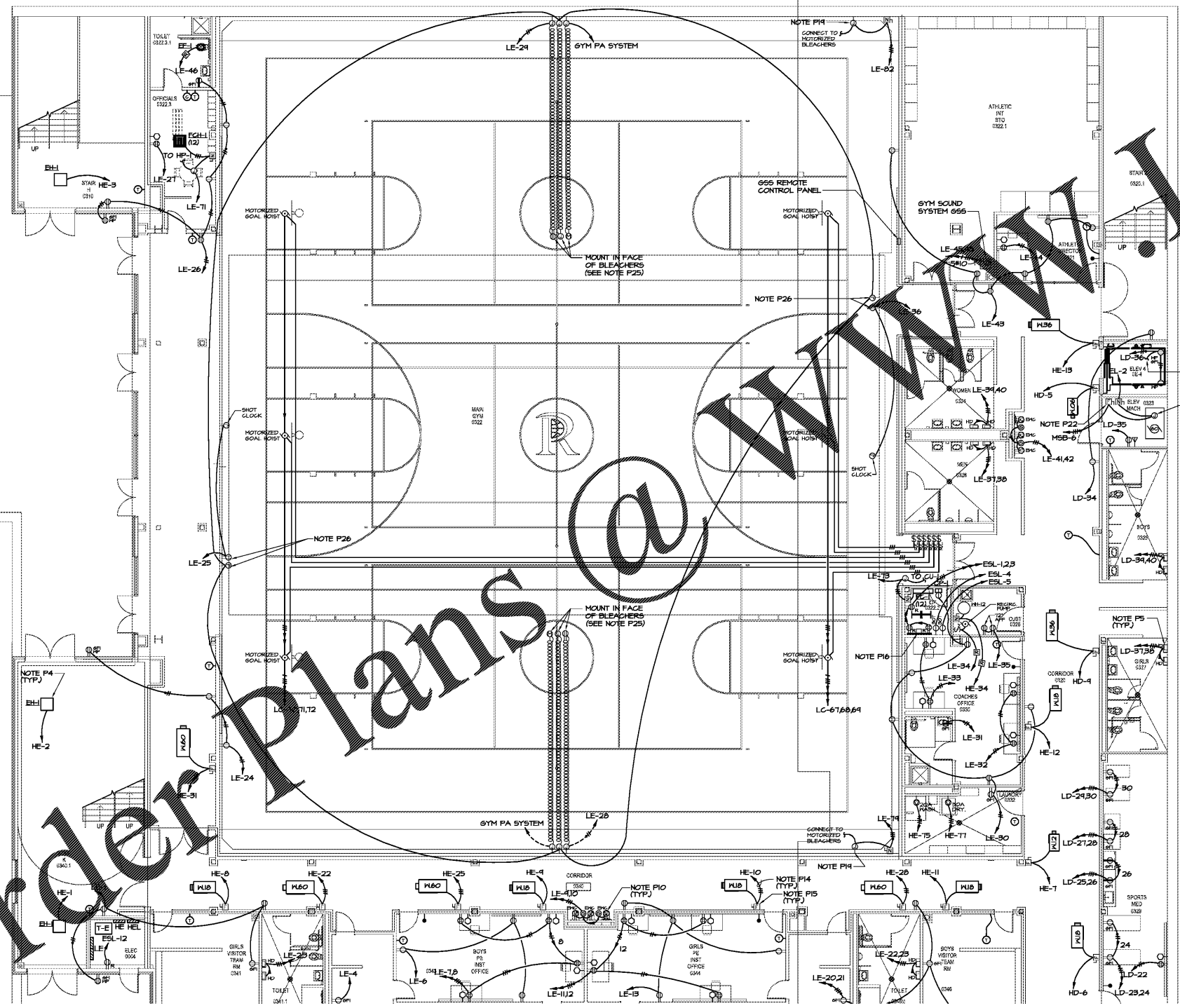
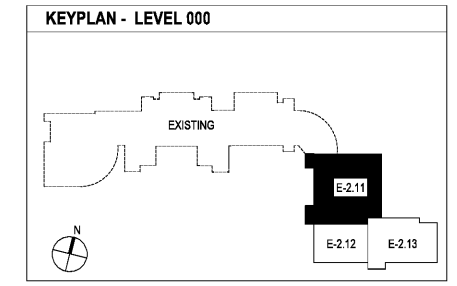
SHEET NO.
E-2.11



2) ELEC ROOM 004
 E-2.11 1/4"=1'-0"

REFERENCED POINT NOTE APPLIES TO E-2.11 & E-2.24)

- P1. SEE DETAIL HE-2 FOR TYPICAL RECEPTACLE WIRING.
- P2. DO NOT INSTALL ANY OUTLETS OR SWITCHES TO BACK, IF SHOWN BACK TO BACK, OFFSET A MINIMUM 1/2" BETWEEN OUTLET BOXES.
- P3. WHERE TELEVISION OUTLETS ARE SHOWN THE TELEVISION OUTLET AND THE ADJACENT DUPLEX RECEPTACLE SHALL BE INSTALLED AT THE TELEVISION OUTLET MOUNTING HEIGHT, UNLESS OTHERWISE NOTED ON PLANS.
- P4. CONNECT TO BUS IN DISCONNECT IN UNIT.
- P5. ELECTRICAL CONTRACTOR SHALL MAKE ELECTRICAL AND GROUND CONNECTIONS TO ALL HAND DRYERS.
- P6. REMOVE AND INSTALL ENGRAVED COVER PLATE FOR EXHAUST FAN SWITCH. ENGRAVING SHALL READ "EXHAUST FAN". COORDINATE EACH LOCATION WITH ARCHITECTURAL.
- P7. SEE DETAIL 2/E-2.12 FOR TYPICAL FRONT OF CLASSROOM LAYOUT.
- P8. DEVICES ARE SHOWN ON THIS DRAWING FOR LOCATION. SEE E-3.11 THRU E-3.31 FOR CIRCUITING OF INTERCOM SYSTEM.
- P9. COORDINATE EXACT LOCATION OF THERMOSTATS AND SENSORS WITH MECHANICAL.
- P10. INSTALL RECEPTACLES FOR ELECTRIC WATER COOLERS AT LOCATION AND HEIGHT AS INDICATED IN WATER COOLER MANUFACTURER'S SHOP DRAWINGS. RECEPTACLES ARE TO BE TOTALLY CONCEALED WITHIN UNIT. COORDINATE WITH PLUMBING.
- P11. SUSPEND DISCONNECT WITH ANGLE IRON FROM STRUCTURE WITH TOP OF DISCONNECT LEVEL WITH TOP OF HVAC UNITS WHERE WALL IS NOT WITHIN 4' OF CONNECTION POINT OF UNIT.
- P12. SEE MECHANICAL EQUIPMENT LEGEND ON SHEET E-6.12 FOR SWITCH AND CONDUCTOR SIZES.
- P13. CONNECT TO CHAIR LIFT PER MANUFACTURER'S INSTRUCTIONS. CONFIRM ELECTRICAL REQUIREMENTS WITH LIFT SUBMITTALS/INSTRUCTION SHEETS PRIOR TO INSTALLATION.
- P14. ALL CONDUIT IN CORRIDORS SHALL BE ABOVE HWP UNITS AND OUT OF UNIT ACCESS SPACE. SEE MECHANICAL FOR ACCESS SPACES.
- P15. INSTALL DISCONNECT ON HALL ABOVE CEILING AS CLOSE TO UNIT CONNECTION LOCATION AS POSSIBLE, BUT OUT OF UNIT ACCESS SPACE. SWITCH MUST HAVE WORKING CLEARANCES IN FRONT OF SWITCH 30" WIDE X 42" DEEP AS REQUIRED BY NEC SECTION 110-26. CO-ORDINATE WITH OTHER TRADES. SEE MECHANICAL EQUIPMENT LEGEND FOR SWITCH AND CONDUCTOR SIZES.
- P16. INSTALL ERICO 6 HOLE GROUND BUS ASSEMBLY AT 1' AFF ON BACKBOARD, RUN #6 GROUND FROM BUS TO STEEL STRUCTURE.
- P17. INSTALL CONDUIT AND JUNCTION BOXES FOR FUTURE ACCESS CONTROLS. SEE 4/E6.11
- P18. CCTV SYSTEM IS FURNISHED AND INSTALLED BY SECURITY CONTRACTOR FOR EXTERIOR LOCATIONS. INSTALL A WEATHERPROOF SINGLE GANG JUNCTION BOX W/ COVER FLUSH IN BRICK WALL 10' OR 12" ABOVE INSIDE FINISHED FLOOR AS INDICATED. RUN A 1" CONDUIT FROM EACH BOX TO ABOVE ACCESSIBLE CORRIDOR CEILING FOR CABLE BY SECURITY CONTRACTOR. COORDINATE EXACT LOCATIONS SO BOXES WILL BE CONCEALED BEHIND CAMERA MOUNTS.
- P19. INSTALL 12"x12"x6" J-BOX AT 60" AFF ON HALL FOR CONNECTION TO BLEACHER MOTORS AS DIRECTED BY SUPPLIER'S SHOP DRAWINGS.
- P20. INSTALL RECEPTACLE ABOVE CEILING FOR TRAP PRIMER TRANSFORMER.
- P21. CONNECT TO ELEVATOR CONTROLLER AS DIRECTED BY ELEVATOR SUPPLIER.
- P22. PROVIDE AUXILIARY CONTACT IN DISCONNECT SWITCH FOR CONNECTION TO ELEVATOR CONTROLS.
- P23. INSTALL 2"x4" J-BOX 12" AFF WITH 1/2" CONDUIT UP IN WALL STUBBED OUT ABOVE THE CEILING FOR OWNER SUPPLIED SPEAKERS. COORDINATE EXACT LOCATION OF BOX WITH OWNER TO AVOID WINDOWS AND SOUND PANELS (SEE ARCH ELEVATION 143/A2.32).
- P24. INSTALL 4"x4" J-BOX WITH 2" CONDUIT UP IN WALL STUBBED OUT ABOVE THE CEILING FOR OWNER SUPPLIED STEREO. COORDINATE EXACT LOCATION OF BOX WITH OWNER TO AVOID WINDOWS AND SOUND PANELS (SEE ARCH ELEVATION 1/A2.32).
- P25. INSTALL JUNCTION BOXES FOR POWER AND SCOREBOARD CONTROLS IN HALL AT 24" AFF AND PROVIDE COILED CABLE ATTACHED TO BLEACHERS TO CONNECTION TO OUTLETS TO BE INSTALLED IN FACE OF FIRST RISER BY CONTRACTOR.
- P26. INSTALL TWO DOUBLE GANG OUTLET BOXES 6" ABOVE TOP ELEVATION OF SCOREBOARD FOR CONNECTION OF POWER AND CONTROLS TO SCOREBOARD FURNISHED BY OTHERS. EXTEND 120V POWER CIRCUIT TO SHOT CLOCKS AND CONNECT AS DIRECTED BY MANUFACTURER. CONFIRM LOCATIONS OF SCOREBOARDS AND SHOT CLOCKS WITH ARCHITECT PRIOR TO INSTALLATION OF BOXES/CIRCUITS.
- P27. CONNECT TO DOOR MOTOR AND RAISE/LOWER OPERATOR AS DIRECTED BY MANUFACTURER. CONFIRM ELECTRICAL REQUIREMENTS WITH MANUFACTURER'S SHOP DRAWINGS. CONFIRM OPERATOR/SWITCH LOCATION WITH ARCHITECT/OWNER. MOUNT DISCONNECT SWITCH ON WALL AS CLOSE TO MOTOR AS POSSIBLE.
- P28. FOR ROOF MOUNTED EQUIPMENT INDICATED, RUN CONDUIT UP THROUGH PIPE CURB FURNISHED UNDER MECHANICAL. SECURE CONDUIT TO STRUCTURE FOR SUPPORT AND RUN FLEXIBLE WATERPROOF CONDUIT FROM RISER 12" ABOVE GAF TO UNIT. SEE MECHANICAL EQUIP. LEGEND ON SHEET E6.12 FOR SWITCH AND CONDUCTOR SIZES.
- P29. RISE THROUGH PIPE CURB AND INSTALL RECEPTACLE W/ HUBBELL MP26M COVER ON UNIT OR EQUIP. CURB. COORDINATE WITH MECHANICAL. SEE NOTE P28 FOR CONDUIT.
- P30. INSTALL RECEPTACLE FOR DRINKING FOUNTAIN REMOTE CHILLER ABOVE CEILING. REMOTE FCRI RESET BUTTON SHALL BE INSTALLED AT DRINKING FOUNTAIN HEIGHT IN ACCESSIBLE LOCATION. COORDINATE EXACT LOCATION OF RESET BUTTON AND RECEPTACLE WITH ARCHITECT PRIOR TO INSTALLATION. CONFIRM EXACT CONNECTION WITH HFR'S SHOP DRAWINGS.



1) LEVEL 000 FLOOR PLAN - PART 1- POWER
 E-2.11 1/8"=1'-0"

Order Plans @ www.lidline.com