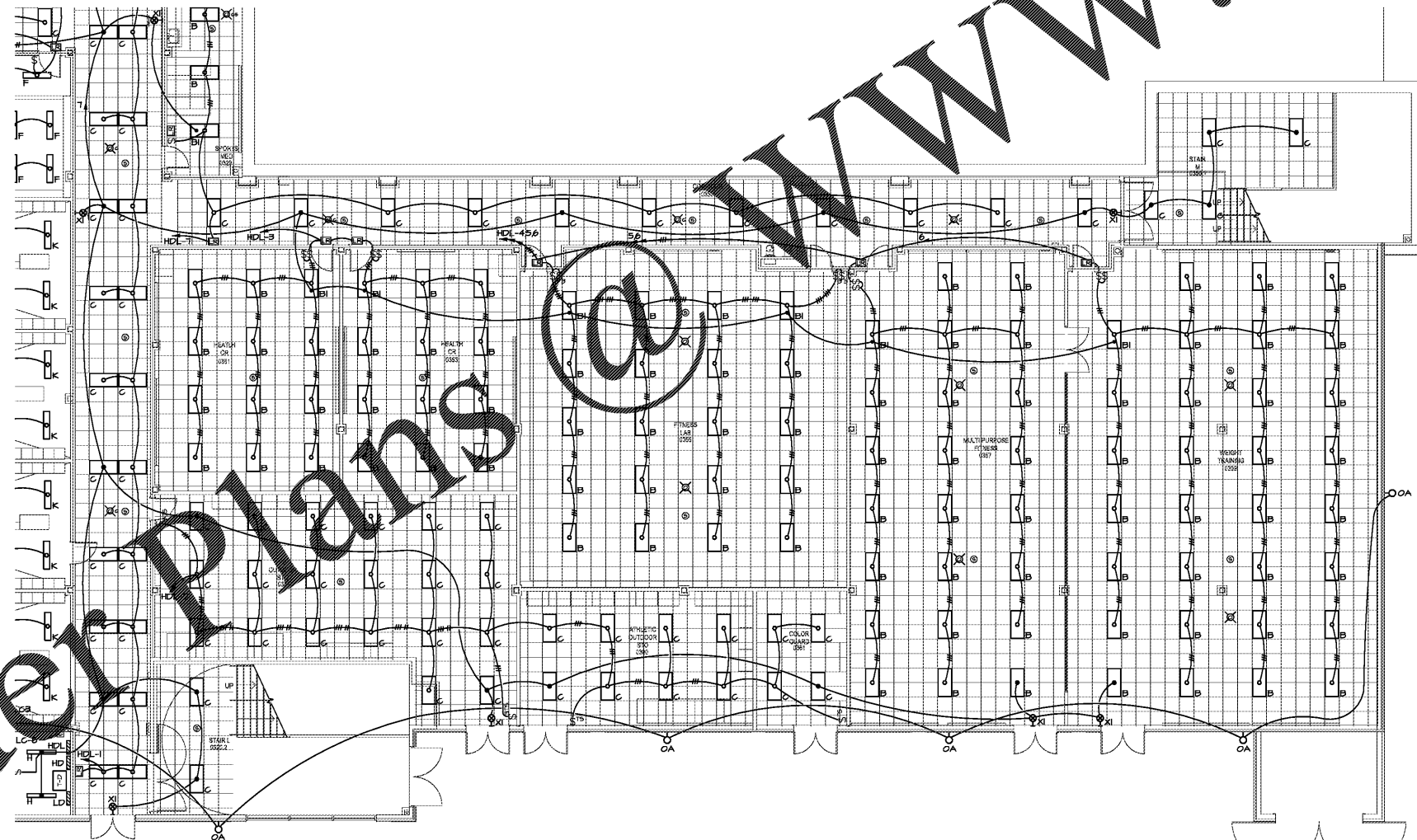
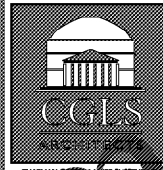
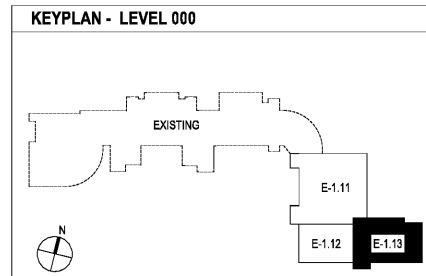


Order Plans @ WWW.LDILine.com



1 LEVEL 000 FLOOR PLAN - PART 3 - LIGHTING  
E-1.13 1/8"=1'-0"

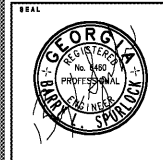
SEE SHEET E-1.11 FOR REFERENCED LIGHTING NOTES.



CHAPMAN GRIFFIN LANIER SUSSENBACH ARCHITECTS  
INC.



SPURLOCK ASSOCIATES, INC.  
2970 Clairmont Rd., Suite 420  
Atlanta, GA 30329  
P: 404.633.0245  
F: 404.633.1756



DATE	NO.	DESCRIPTION
03/27/18		SCHEMATIC PRELIMINARY
04/19/18		SCHEMATIC DESIGN DEVELOPMENT
04/17/18		SCHEMATIC DESIGN DOCUMENTS
04/17/18		SCHEMATIC DESIGN - SC/ PERMIT SET
04/17/18		FINAL SCHEMATIC SUBMITTAL
11/02/18		ISSUED FOR PROPOSALS

DOE FACILITY CODE: 660 -3066  
**RIVERWOOD HIGH SCHOOL-PHASE 3-8  
AUDITORIUM / GYMNASIUM ADDITION**  
5900 RAIDER DRIVE NW SANDY SPRINGS, GA 30328  
FULTON COUNTY SCHOOLS RFP NO. 411-19

SHEET TITLE  
**LEVEL 100  
FLOOR PLAN-  
PART 3-  
LIGHTING**

PROJECT NO.  
18015.02

DATE  
09/17/18

DRAWN BY: GTR  
CHECKED BY: BLS

SHEET NO.

**E-1.13**