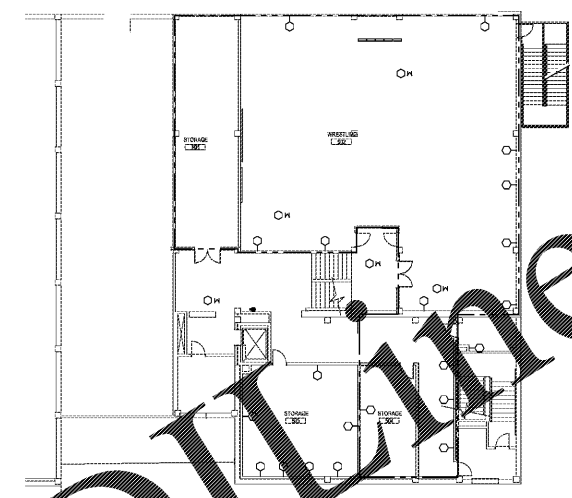
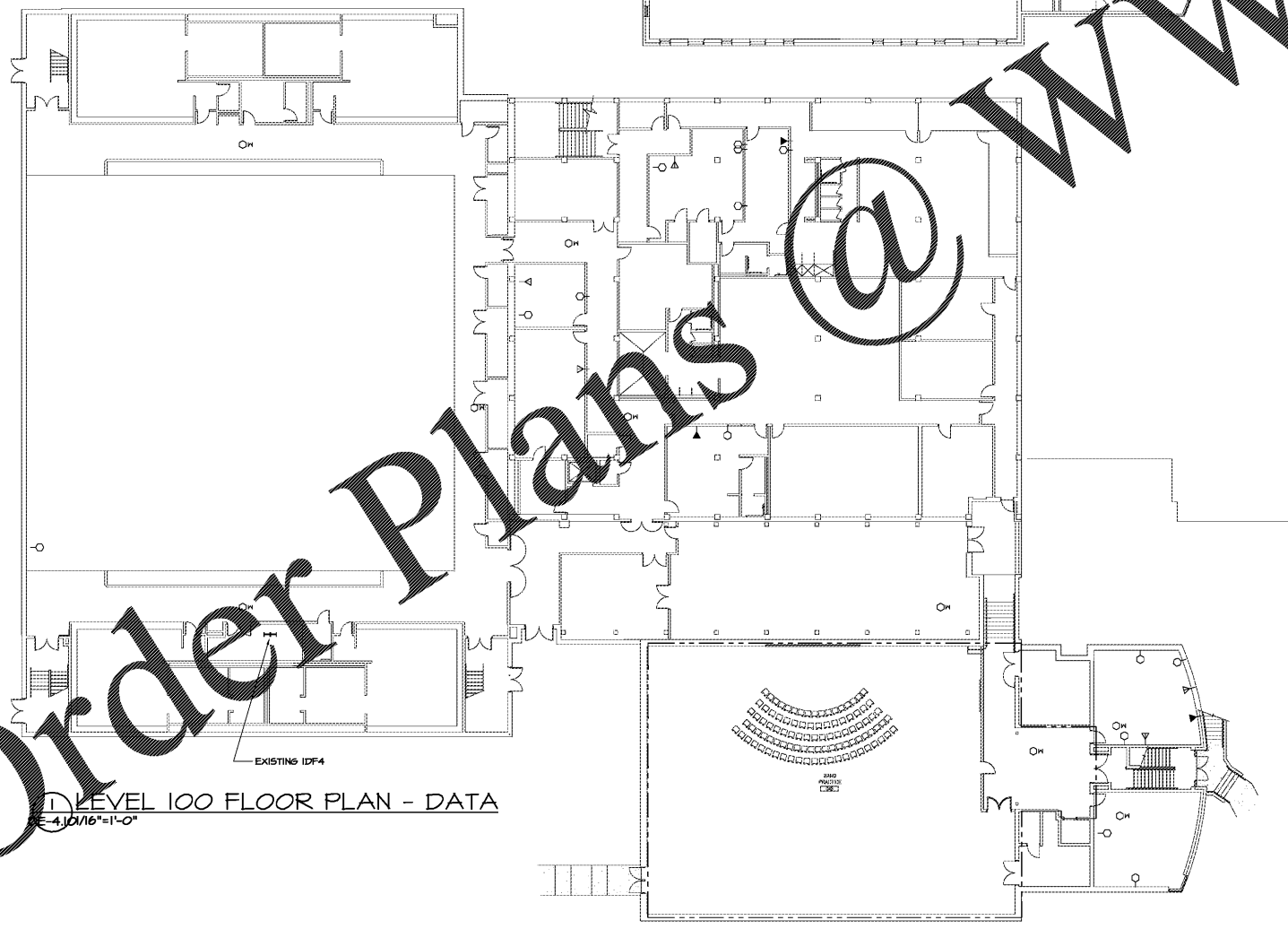


2 LEVEL 200 FLOOR PLAN - DATA
DE-4.10/16"=1'-0"

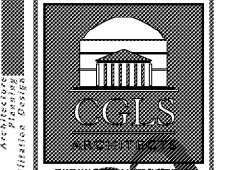


3 LEVEL 300 FLOOR PLAN - DATA
DE-4.10/16"=1'-0"



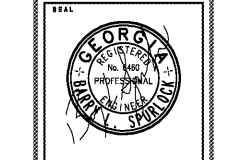
1 LEVEL 100 FLOOR PLAN - DATA
DE-4.10/16"=1'-0"

Order Plans @ WWW.LDLINE.COM



CHAPMAN GRIFFIN LANIER SUSSENBACH ARCHITECTS
INC.

FOR RELEASED OR CONSTRUCTION
CONSULTANT
SPURLOCK ASSOCIATES, INC.
2970 Clairmont Rd., Suite 420
Atlanta, GA 30329
P: 404.633.0245
F: 404.633.1756



DATE	NO.	DESCRIPTION
03/27/18		DOE PRELIMINARY SUBMITTAL
04/19/18		DOE DESIGN DEVELOPMENT DOCUMENTS
04/17/18		DOE ARCHITECTURAL SET / PERMIT SET
04/17/18		FINAL DOE SUBMITTAL
11/01/18		ISSUED FOR PROPOSALS

DOE FACILITY CODE: 660 -3066
RIVERWOOD HIGH SCHOOL-PHASE 3-8 AUDITORIUM / GYMNASIUM ADDITION
5900 RAIDER DRIVE NW SANDY SPRINGS, GA 30328
FULTON COUNTY SCHOOLS RFP NO. 411-19

PROJECT TITLE	LEVELS 100, 200 & 300 FLOOR PLANS - DATA
PROJECT NO.	16015.02
DATE	09/17/18
DRAWN BY	GTR
CHECKED BY	BLS
PROJECT NO.	DE-4.10