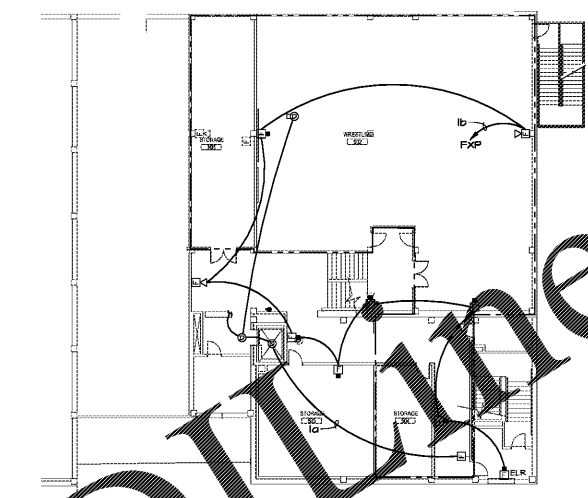
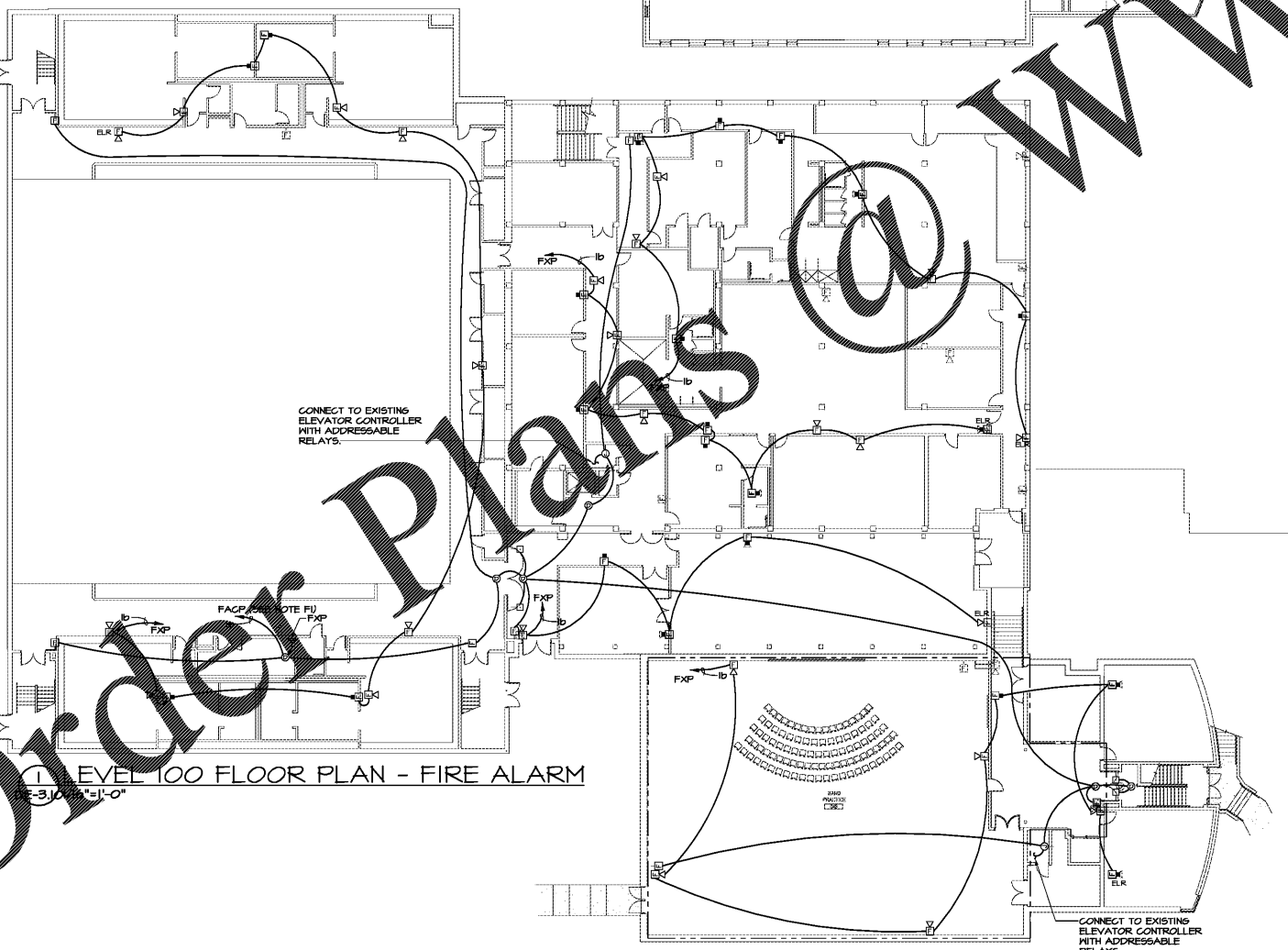


2 LEVEL 200 FLOOR PLAN - FIRE ALARM
DE-3.10/16"=1'-0"



3 LEVEL 300 FLOOR PLAN - FIRE ALARM
DE-3.10/16"=1'-0"

FIRE ALARM WIRE LEGEND	
SYMBOL	DESCRIPTION
a	2#16 TH/SHLD. W/ST PENN #251915 (COMM) (RED)
b	2#12 SHLD. (SIGNAL) W/ST PENN #60994 (RED)
c	2#14 SHLD. (MAGNET POWER) W/ST PENN #60912 (RED)
d	2#14 SHLD. (DOOR HOLDER POWER) W/ST PENN #60912 (RED)
ELR	END OF LINE RESISTOR
*NOTE: ALL CABLE IS PLENUM RATED	

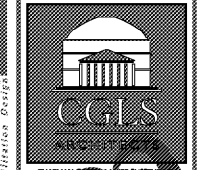


1 LEVEL 100 FLOOR PLAN - FIRE ALARM
DE-3.10/16"=1'-0"

FIRE ALARM - SCOPE OF WORK:
EXTEND EXISTING NOTIFIER ADDRESSABLE FIRE ALARM SYSTEM INTO NEW ADDITION. INSTALL NEW DEVICES AS SHOWN.

GENERAL FIRE ALARM NOTES:
(APPLIES TO E-4.11 THRU E-4.21)
A. FIRE ALARM SYSTEM TO BE PROVIDED IN ACCORDANCE WITH THE FULTON COUNTY FIRE PROTECTION AND LIFE SAFETY ORDINANCE. FIRE ALARM CONTRACTOR SHALL OBTAIN A FIRE ALARM SYSTEM PERMIT FROM THE SANDY SPRINGS FIRE MARSHAL'S OFFICE PRIOR TO INSTALLATION.
B. CONTRACTOR TO VERIFY ROOM NUMBER AND NAMES PRIOR TO PROGRAMMING FIRE ALARM SYSTEM.
C. MOUNT EXTENDER PANELS AT LEAST 2' ABOVE FLOOR BUT NOT GREATER THAN 5' ABOVE FLOOR.
D. SEE LEGEND ON SHEET E6.11 FOR FIRE DEVICE SYMBOLS.
E. SEE SPECIFICATIONS SECTION 1650 FOR ADDITIONAL REQUIREMENTS OF FIRE ALARM SYSTEM.

REFERENCED FIRE ALARM NOTES:
(APPLIES TO E-4.11 THRU E-4.21)
F1. CONNECT NEW DEVICES TO THE EXISTING NOTIFIER NFS-320 ADDRESSABLE FIRE ALARM SYSTEM LOCATED IN FRONT OFFICE.
F2. DISCONNECT AND REMOVE ALL EXISTING FIRE ALARM DEVICES TO INCLUDE EXTENDER PANELS AND ALL WIRING.



CHAPMAN GRIFFIN LANIER SUSSENBACH ARCHITECTS
INC.

SPURLOCK ASSOCIATES, INC.
2970 Clairmont Rd., Suite 420
Atlanta, GA 30329
P: 404.633.0245
F: 404.633.1756



DATE	NO.	DESCRIPTION
03/27/18		SCHEMATIC DEVELOPMENT
04/19/18		SCHEMATIC DEVELOPMENT DOCUMENTS
08/17/18		SCHEMATIC DEVELOPMENT PERMIT SET
09/17/18		FINAL SCHEMATIC SUBMITTAL
11/01/18		ISSUE FOR PROPOSALS

DOE FACILITY CODE: 660 -3066
RIVERWOOD HIGH SCHOOL-PHASE 3-8 AUDITORIUM / GYMNASIUM ADDITION
5900 RAIDER DRIVE NW SANDY SPRINGS, GA 30328
FULTON COUNTY SCHOOLS RFP NO. 411-19

SHEET TITLE	
LEVELS 100, 200 & 300 FLOOR PLANS - FIRE ALARM	
PROJECT NO.	16015.02
DATE	09/17/18
DRAWN BY	GTR
CHECKED BY	BLS
SHEET NO.	
DE-3.10	