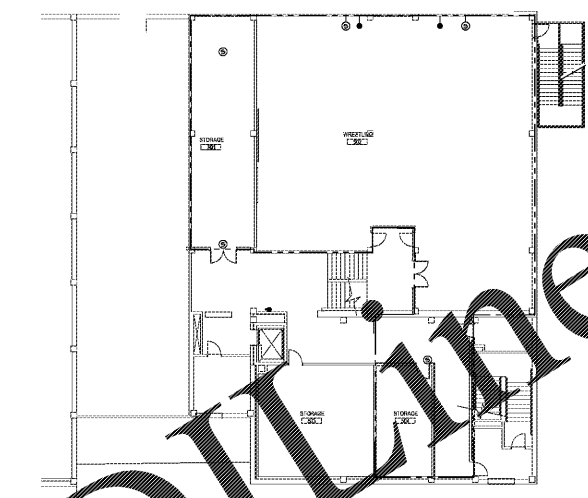
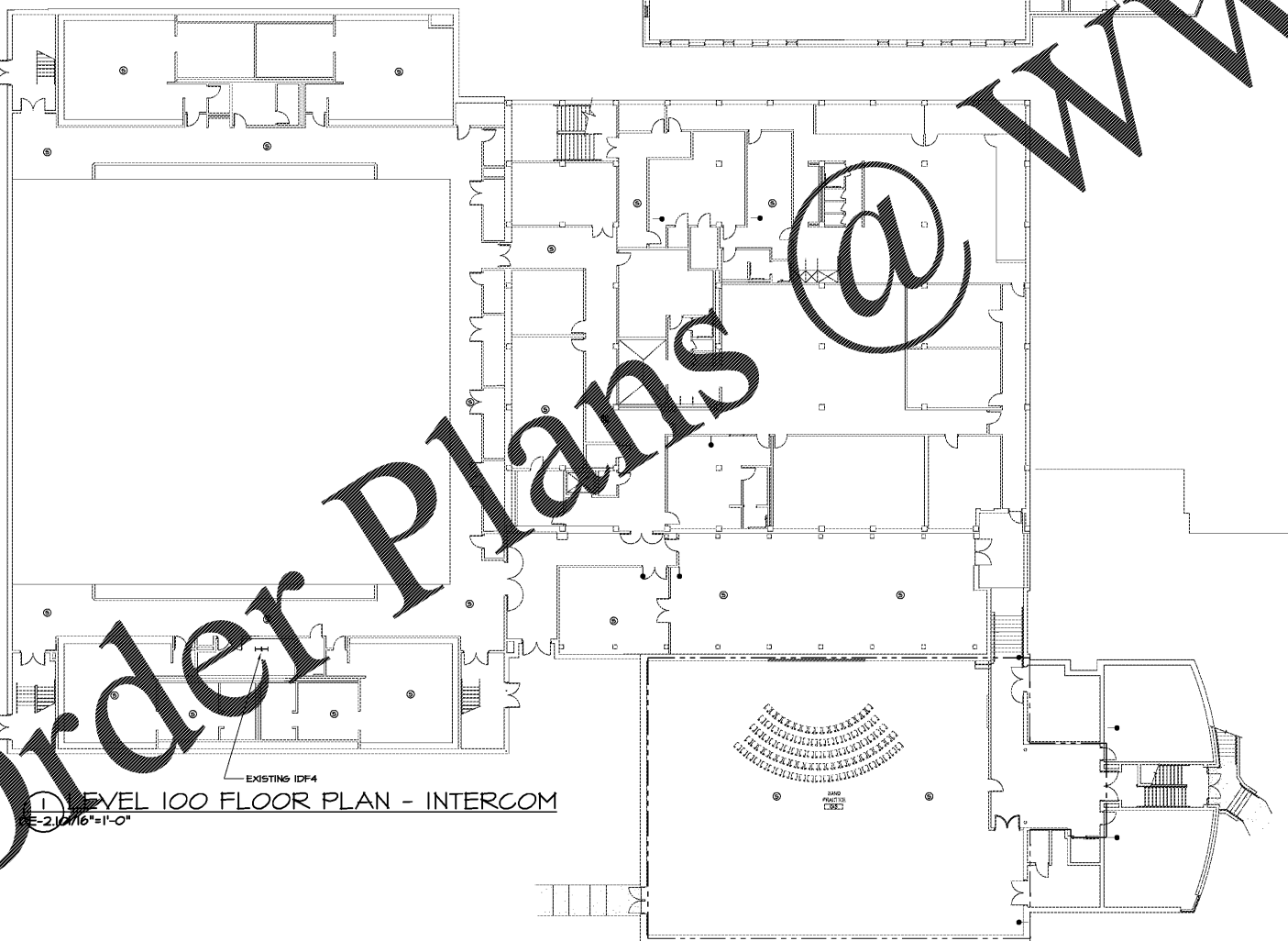


2 LEVEL 200 FLOOR PLAN - INTERCOM
DE-2.10/16"=1'-0"



3 LEVEL 300 FLOOR PLAN - INTERCOM
DE-2.10/16"=1'-0"



1 LEVEL 100 FLOOR PLAN - INTERCOM
DE-2.10/16"=1'-0"

CABLE LEGEND	
SYMBOL	DESCRIPTION
A	W.P. #254245-BL CAT5E HOME RUN (BLUE)
B	W.P. #25242B-BL 2420 TH/SHLD. CORR./EXT./COMMON (BLUE)
C	WEST PENN #241 CATERERIA SOUND SYSTEM
D	W.P. #GN-254245GN-15 15' BREAKOUT TO CALL STATION (GREEN)
E	W.P. #GN-254245OR-35 35' BREAKOUT TO SPEAKER (ORANGE)
F	WEST PENN #224 MICROPHONE
*NOTE: ALL CABLES ARE PLENUM RATED	

- NOTES: (APPLIES TO E-3.11 THRU E-3.21)
1. ALL NETWORK RACKS, SWITCHES, PATCH PANELS, CORDS, CABLE MANAGEMENT, POWER, BACKBOARDS AND UPS SYSTEMS ARE FURNISHED BY THE OWNER.
 2. THE NETWORKED INTERCOM SYSTEM WILL BE INTEGRATED TO THE OWNER'S TELEPHONE SYSTEM VIA SIP CONNECTION. COORDINATE THE NETWORK CONFIGURATION WITH THE OWNER.

ARCHITECTS
PLANNING
RECONSTRUCTION

SPURLOCK ASSOCIATES, INC.
2970 Clairmont Rd., Suite 420
Atlanta, GA 30329
P: 404.633.0245
F: 404.633.1756

STATE OF GEORGIA
PROFESSIONAL ENGINEER
No. 460
SPURLOCK

DATE	NO.	DESCRIPTION
03/27/18		ISSUE PRELIMINARY QUANTITIES
05/19/18		DESIGN DEVELOPMENT
08/17/18		ISSUE CONSTRUCTION DOCUMENTS
08/17/18		ISSUE CHECKLIST-SCT/PERMIT SET
10/15/18		FINAL ISSUE SUBMITTAL
11/02/18		ISSUED FOR PROPOSALS

DOE FACILITY CODE: 660 -3066
**RIVERWOOD HIGH SCHOOL-PHASE 3-8
 AUDITORIUM / GYMNASIUM ADDITION**
 6900 RAIDER DRIVE NW SANDY SPRINGS, GA 30328
 FULTON COUNTY SCHOOLS RFP NO. 411-19

CHAPMAN GRIFFIN LANIER SUSSENBACH/ARCHITECTS
 400 Georgia Pkwy., Suite 100, Atlanta, Georgia 30339 • Phone: 404.733.5492 • Fax: 404.733.4804

SHEET TITLE
**LEVELS 100,
 200 & 300
 FLOOR PLANS
 - INTERCOM**

PROJECT NO.
16015.02

DATE
09/17/18

DRAWN BY: G.T.R.
 CHECKED BY: B.L.S.

SHEET NO.
DE-2.10

Order Plans @ WWW.LDLINE.COM