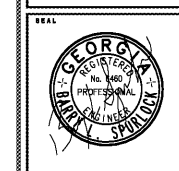


CHAPMAN GRIFFIN LANIER SUSSENBACH ARCHITECTS
ARCHITECTS
PLANNING
FACILITIES DESIGN



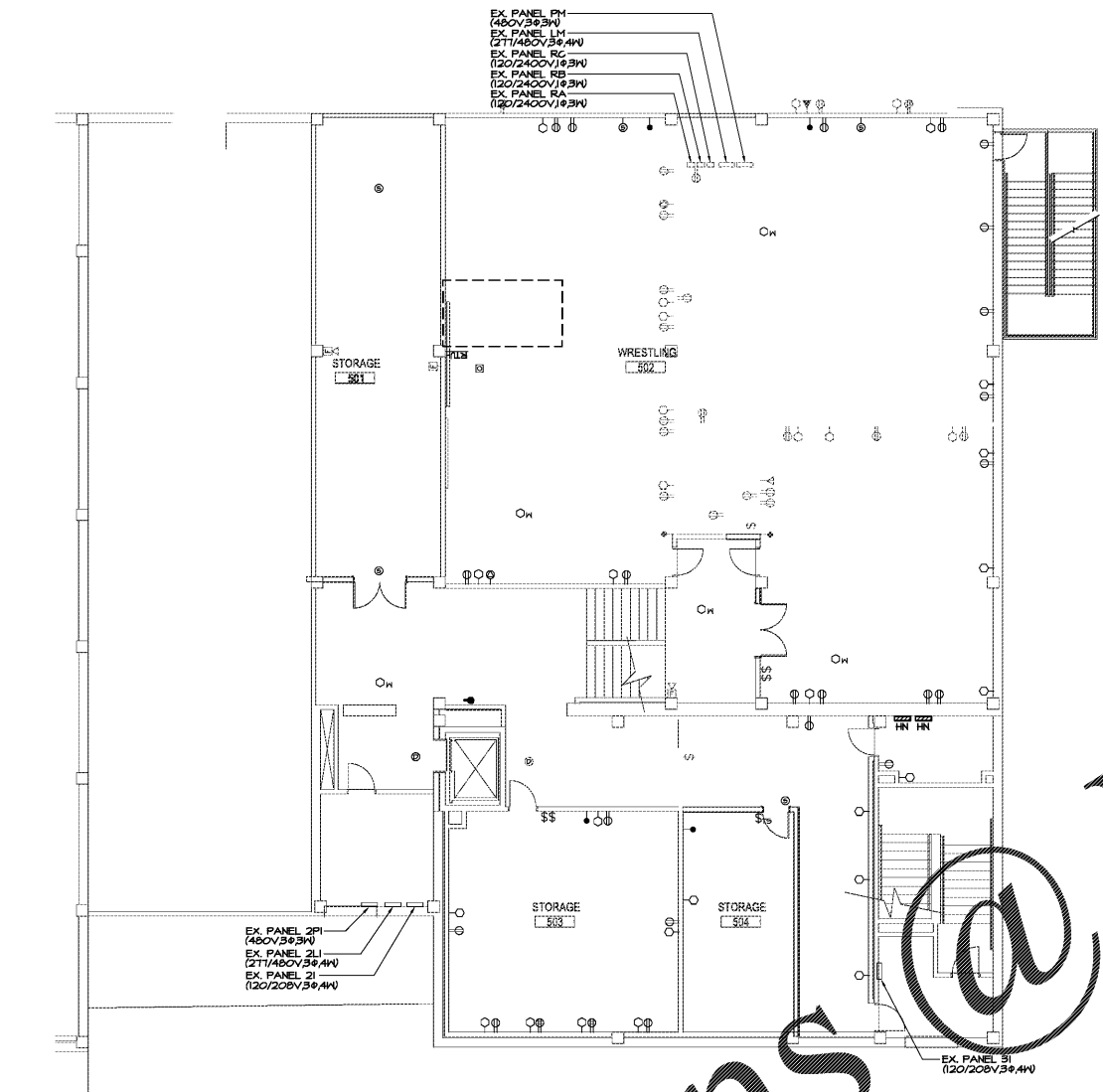
2970 Clairmont Rd., Suite 420
Atlanta, GA 30329
P: 404.633.0245
F: 404.633.1756



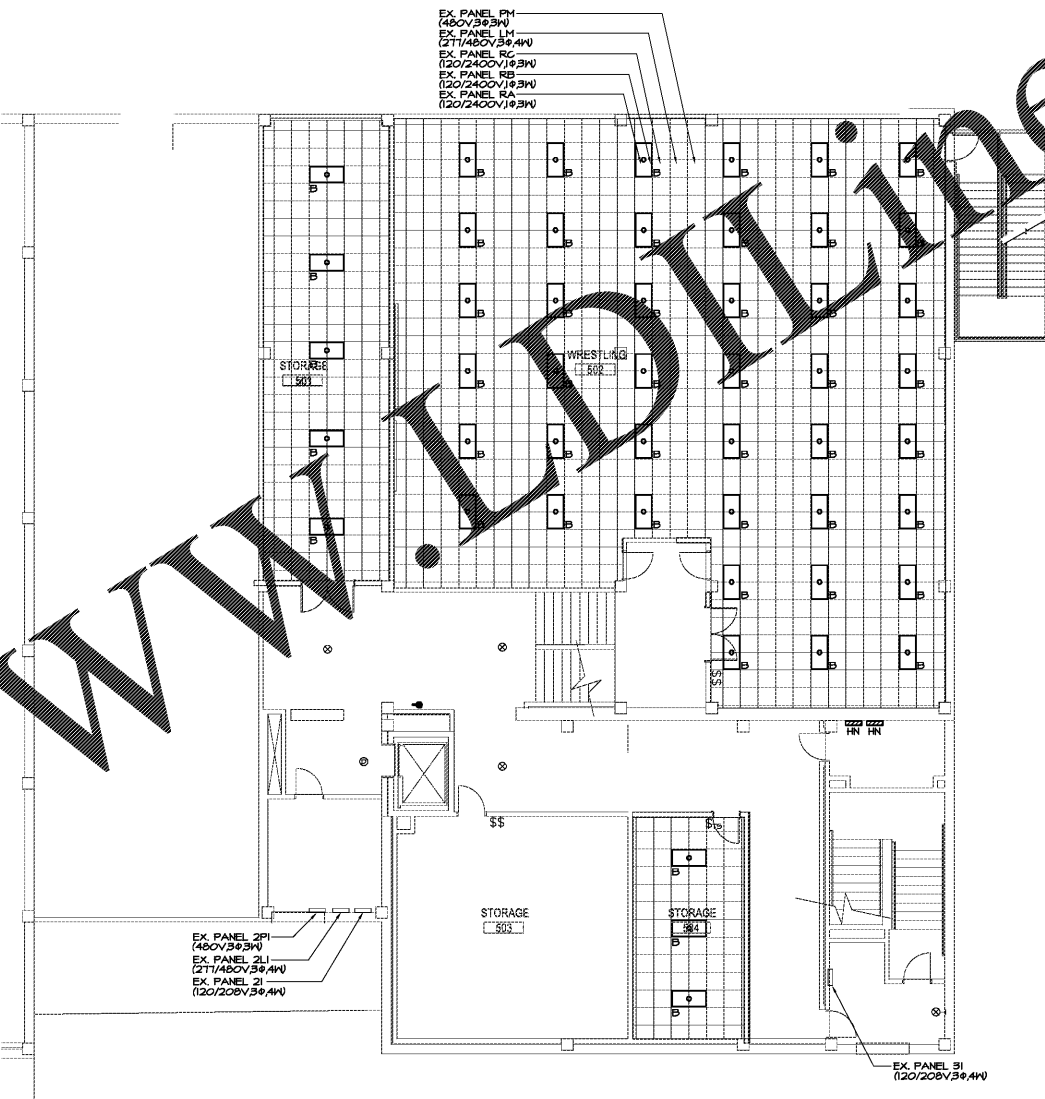
DATE	NO.	DESCRIPTION
03/27/18		ISSUE PRELIMINARY SCHEDULE
06/19/18		ISSUE PRELIMINARY DESIGN DEVELOPMENT DOCUMENTS
08/17/18		ISSUE PRELIMINARY-SC/PERMIT SET
10/19/18		FINAL ISSUE SUBMITTAL READY FOR PROPOSALS

DOE FACILITY CODE: 660 - 3066
**RIVERWOOD HIGH SCHOOL-PHASE 3-8
 AUDITORIUM / GYMNASIUM ADDITION**
 6900 RAIDER DRIVE NW SANDY SPRINGS, GA 30328
 FULTON COUNTY SCHOOLS RFP NO. 411-19

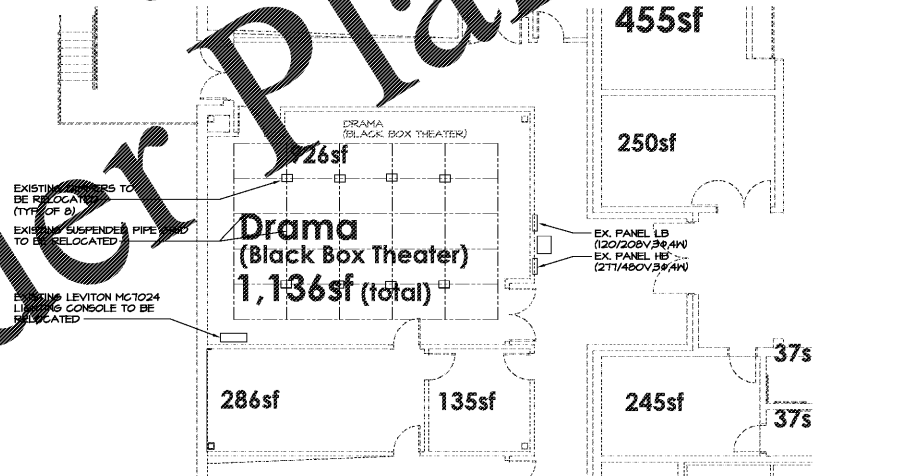
SHEET TITLE	
LEVEL 300 FLOOR PLAN - LIGHTING AND POWER	
PROJECT NO.	18015.02
DATE	09/17/18
DRAWN BY	G.T.R.
CHECKED BY	B.L.S.
SHEET NO.	
DE-1.30	



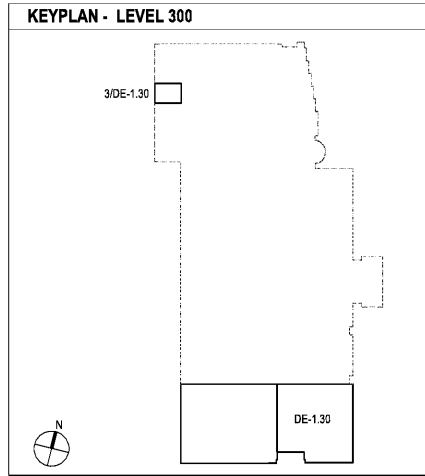
2 LEVEL 300 FLOOR PLAN - POWER
 DE-1.30/8'-1'-0"



1 LEVEL 300 FLOOR PLAN - LIGHTING
 DE-1.30/8'-1'-0"



3 LEVEL 300 FLOOR PLAN - DRAMA CLASSROOM
 DE-1.30/8'-1'-0"



Order Plans @

WWW.ONLINE.COM