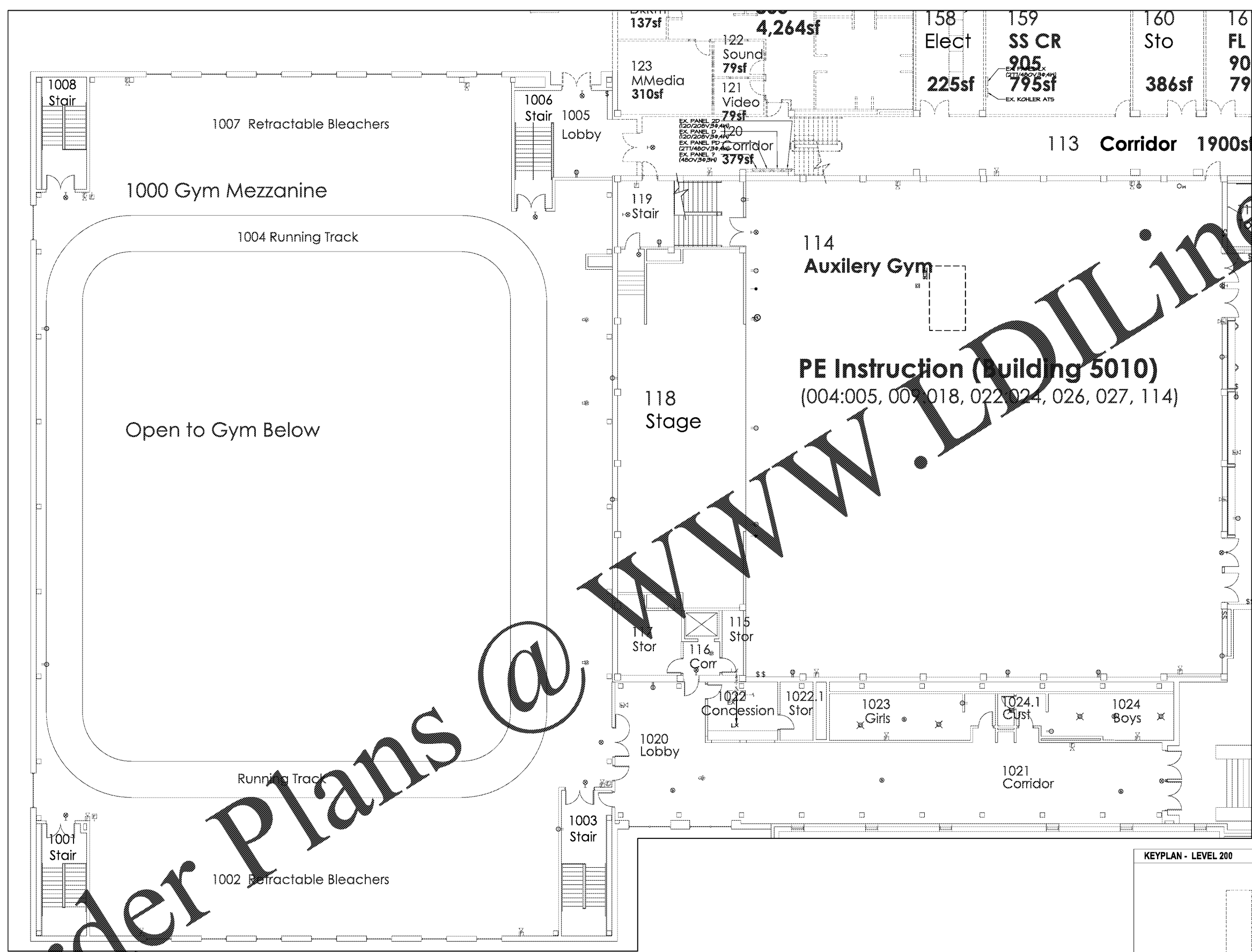
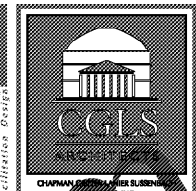
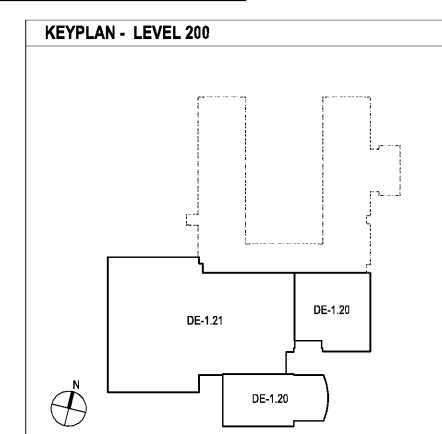


Order Plans @

WWW.LDLINE.COM



LEVEL 200 FLOOR PLAN - LIGHTING AND POWER  
 RE-1.21/1/8"=1'-0"



CHAPMAN GRIFFIN LANIER SUSSENBACH ARCHITECTS  
 2970 Clairmont Rd., Suite 420  
 Atlanta, GA 30329  
 P: 404.633.0245  
 F: 404.633.1756



DATE	NO.	DESCRIPTION
03/27/18		CODE PRELIMINARY SUBMITTAL
04/19/18		DESIGN DEVELOPMENT
04/19/18		CODE CONSTRUCTION DOCUMENTS
04/17/18		CODE CHECK - SET / PERMIT SET
04/17/18		FINAL CODE SUBMITTAL
11/07/18		ISSUED FOR PROPOSALS

RIVERWOOD HIGH SCHOOL-PHASE 3-8  
 AUDITORIUM / GYMNASIUM ADDITION  
 5900 RAIDER DRIVE NW SANDY SPRINGS, GA 30328  
 FULTON COUNTY SCHOOLS RFP NO. 411-19

PROJECT NO.	18015.02
DATE	09/17/18
DRAWN BY	GTR
CHECKED BY	BLS
SHEET NO.	DE-1.21