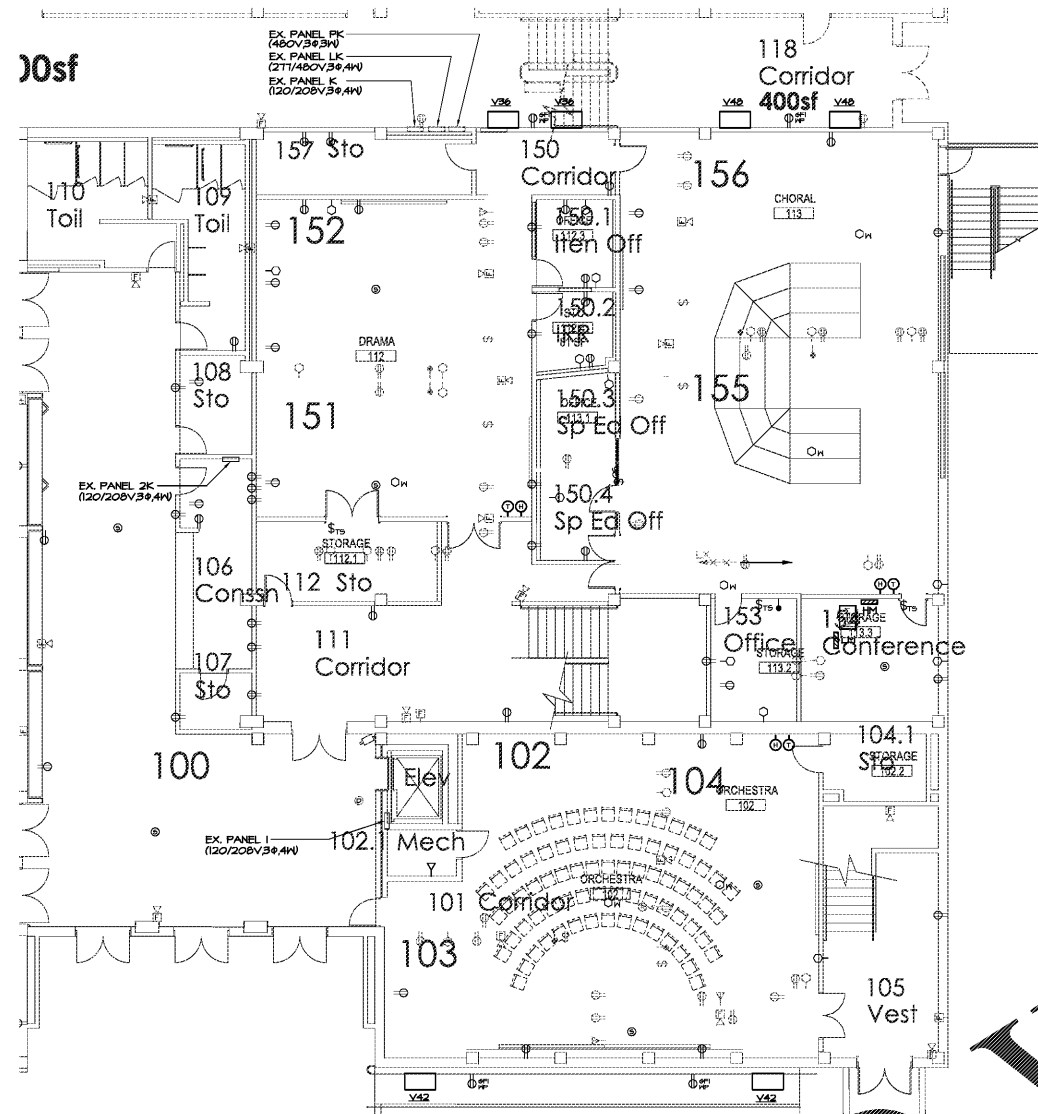
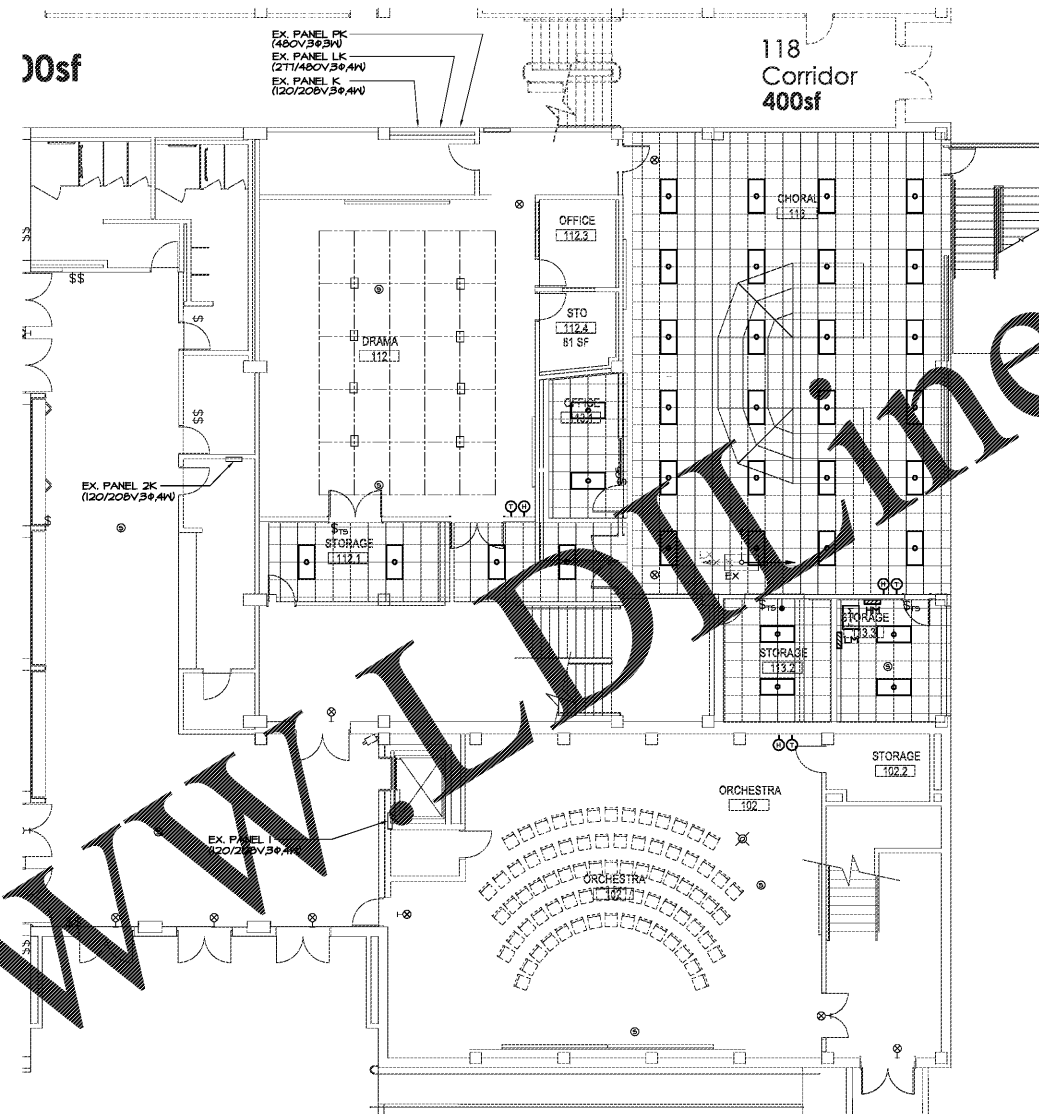


Order Plans @



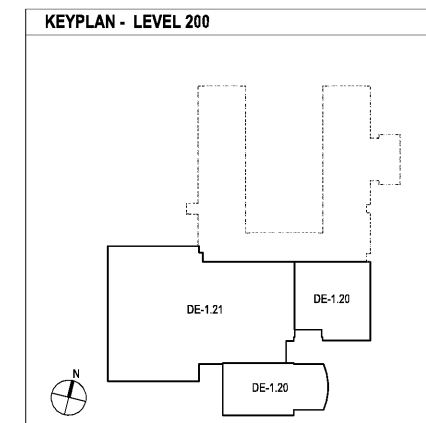
LEVEL 200 FLOOR PLAN - POWER
DE-1.20/18"=1'-0"



LEVEL 200 FLOOR PLAN - LIGHTING
DE-1.20/18"=1'-0"



LEVEL 200 FLOOR PLAN - LIGHTING AND POWER
DE-1.20/18"=1'-0"



CHAPMAN GRIFFIN LANIER SUSSENBACH ARCHITECTS
 6800 GRANT PARK, SUITE 100, ATLANTA, GEORGIA 30328 • PHONE: 404.733.5492 • FAX: 404.733.6804

DOE FACILITY CODE: 660 -3066
RIVERWOOD HIGH SCHOOL-PHASE 3-8
AUDITORIUM / GYMNASIUM ADDITION
 5900 RAIDER DRIVE NW SANDY SPRINGS, GA 30328
 FULTON COUNTY SCHOOLS RFP NO. 411-19

ARCHITECT OF RECORD
 FACILITIES DESIGN

APPROVED FOR CONSTRUCTION
 PROFESSIONAL SEAL
SPURLOCK ASSOCIATES, INC.
 2970 Clairmont Rd., Suite 420
 Atlanta, GA 30329
 P: 404.633.0245
 F: 404.633.1756

DATE	NO.	DESCRIPTION
03/27/18		DOE PRELIMINARY SUBMITTAL
04/19/18		DOE DESIGN DEVELOPMENT DOCUMENTS
04/17/18		DOE CHECK-IN-SC/PERMIT SET
04/17/18		FINAL DOE SUBMITTAL
11/07/18		ISSUED FOR PROPOSALS

SHEET TITLE
LEVEL 200 FLOOR PLAN - LIGHTING AND POWER

PROJECT NO.
 18015.02

DATE
 09/17/18

DRAWN BY: GTR
 CHECKED BY: BLS

SHEET NO.
DE-1.20