

075 Girls Lockers 1,159sf
 Toilet & Shower
 Toilet & Shower
 073 Girls Lockers 1,121sf
 Stor 074
 Toi
 Coaches

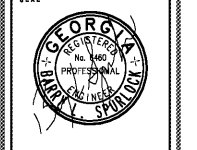
060 Main Gym 15,000sf

PE Instruction (Building 5013)
 (050:051, 060:075, 1000, 1002, 1004, 1007)
 34,583sf Total

064 Boys Lockers 1,081sf
 Toilet
 Shower
 Shower
 Toilet
 063 Cust 63sf
 Storage 207sf
 062
 061 Boys Lockers 1,081sf
 060.1 Stair
 060.2 Stair

021 Elec 75sf
 020 Corridor 270sf
 017 Coach's Work Area 501sf
 023 Girls PE Office 36sf
 022 Girls Locker Room 2,744sf
 Team Lockers
 019 Elec Stor 25sf
 018 Stor 70sf
 024 Oil/Shwr 13sf
 026 Storage 357sf
 027 Storage 338sf
 025 Corr 339sf
 010 Boys Locker Room 1,874sf
 015 Shwr 193sf
 014 Toilet 196sf
 011 Office 474sf
 011.1 Toi 91sf
 012 Football Lockers 864sf
 013 Storage 383sf
 050 912 Weight Room 2,288sf
 028 Vest 203sf
 029 Stair 256sf
 008 Mech 43sf
 007 Stor 28sf
 009 Laundry 159sf
 008 Elev 44sf
 003 Corridor 1,386sf
 004 Film 289sf
 005 Sports Medicine 566sf
 006 Gym Stor 91sf
 006 Stor 91sf
 002 Mechanical 416sf
 001 Stair 341sf
 072 55sf FP Clos
 071 Stor 55sf
 070 Gym Stor 91sf
 069 Stor 55sf
 068 Gym Stor 91sf
 067 Gym Stor 91sf
 066 Gym Stor 91sf
 065 Elec 30sf
 052 Corr
 051 C/V Training 585sf

Order Plans @ LANIERPLANS.COM



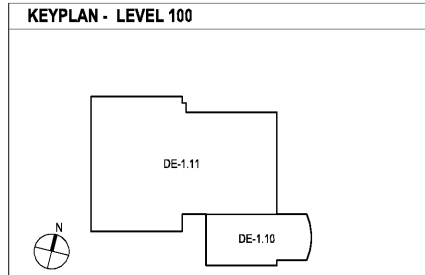
DATE	NO.	DESCRIPTION
03/27/18		ISSUE PRELIMINARY QUANTITIES
04/19/18		ISSUE DESIGN DEVELOPMENT DOCUMENTS
04/17/18		ISSUE CHECKLIST-SC/PERMIT SET
04/19/18		FINAL ISSUE SUBMITTAL READY FOR PERMITS

DOE FACILITY CODE: 660 -3066
RIVERWOOD HIGH SCHOOL-PHASE 3-8 AUDITORIUM / GYMNASIUM ADDITION
 5900 RAIDER DRIVE NW SANDY SPRINGS, GA 30328
 FULTON COUNTY SCHOOLS RFP NO. 411-19

SHEET TITLE
LEVEL 100 FLOOR PLAN - LIGHTING AND POWER

PROJECT NO. 16015.02
 DATE 09/17/18
 DRAWN BY: G.T.R.
 CHECKED BY: B.L.S.

SHEET NO.
DE-1.11



LEVEL 100 FLOOR PLAN - LIGHTING AND POWER
 DE-1.11 1/8"=1'-0"