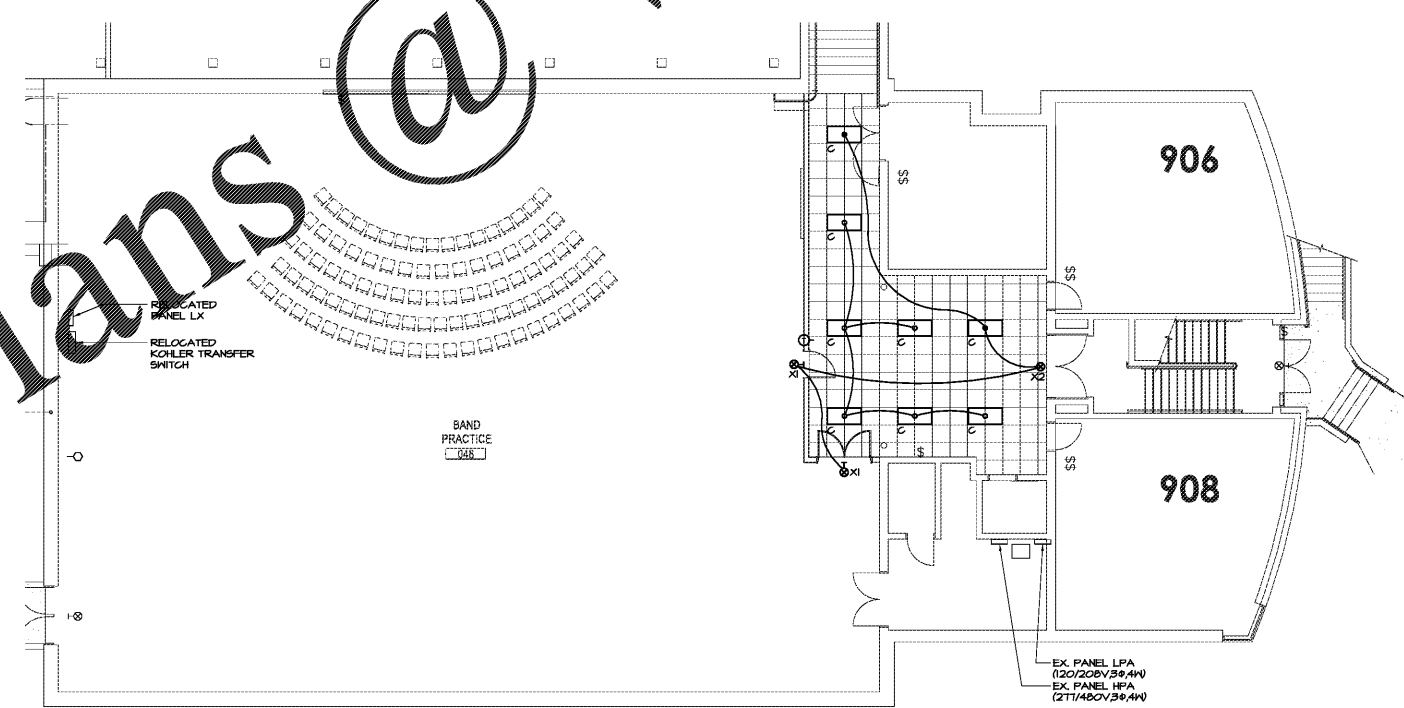


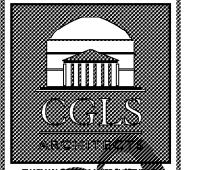
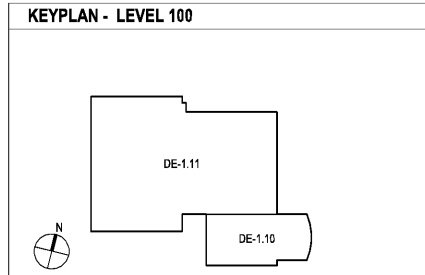
LEVEL 100 FLOOR PLAN - POWER  
DE-1.10/1/8"=1'-0"



LEVEL 100 FLOOR PLAN - LIGHTING  
DE-1.10/1/8"=1'-0"

**GENERAL NOTES:** (ALL SHEETS)  
 A. SEE ARCHITECTURAL RCP DRAWINGS FOR EXACT LOCATIONS OF ALL CEILING DEVICES, SUPPLY/RETURN DIFFUSERS, LIGHT FIXTURES, ETC.  
 B. UNLESS OTHERWISE NOTED, ALL CEILING DEVICES, SPEAKERS, DOWN LIGHTS, SPRINKLER HEADS, ETC. LOCATED WITHIN A CEILING TILE ARE TO BE CENTERED WITHIN THAT TILE.

**REFERENCED ELECTRICAL NOTES:** (APPLIES TO DE-1.01 & DE-1.30)  
 E1. RELOCATE EXISTING THEATRICAL LIGHTING SYSTEM FROM EXISTING DRAMA CLASSROOM TO NEW DRAMA CLASSROOM 112. THIS IS TO INCLUDE PIPE GRID, DIMMERS, CONTROLS AND ALL ASSOCIATED WIRING THAT CAN BE REUSED.



2970 Clairmont Rd., Suite 420  
 Atlanta, GA 30329  
 P: 404.633.0245  
 F: 404.633.1756



DATE	NO.	DESCRIPTION
03/27/18		ISSUE PRELIMINARY SCHEDULE
08/19/18		ISSUE PRELIMINARY DESIGN DEVELOPMENT DOCUMENTS
08/17/18		ISSUE PRELIMINARY PERMIT SET
10/17/18		FINAL ISSUE SUBMITTAL
11/07/18		ISSUE FOR PROPOSALS

**RIVERWOOD HIGH SCHOOL-PHASE 3-8 AUDITORIUM / GYMNASIUM ADDITION**  
 5900 RAIDER DRIVE NW SANDY SPRINGS, GA 30328  
 FULTON COUNTY SCHOOLS RFP NO. 411-19

**SHEET TITLE**  
 LEVEL 100 FLOOR PLANS - LIGHTING AND POWER

**PROJECT NO.**  
 18015.02

**DATE**  
 09/17/18

**DRAWN BY:** GTR  
**CHECKED BY:** BLS

**SHEET NO.**  
 DE-1.10

CHAPMAN GRIFFIN LANIER SUSSENBACH ARCHITECTS  
 6800 GRIFIN PARK, SUITE 100, ATLANTA, GEORGIA 30328 • PHONE: 404.733.5492 • FAX: 404.733.6804

Order Plans @ WWW.DILine.com