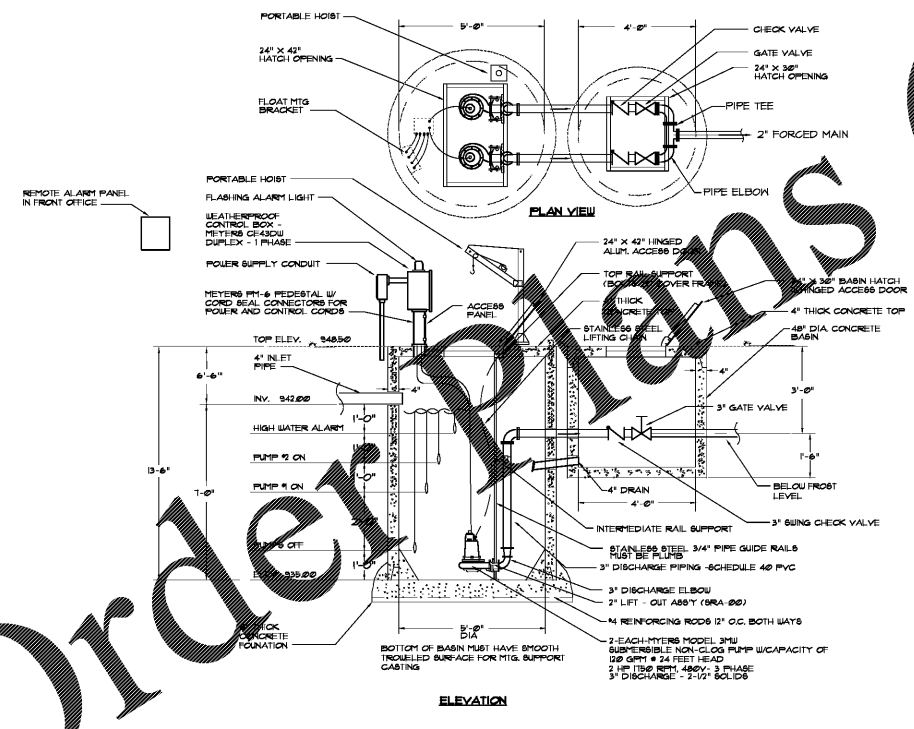
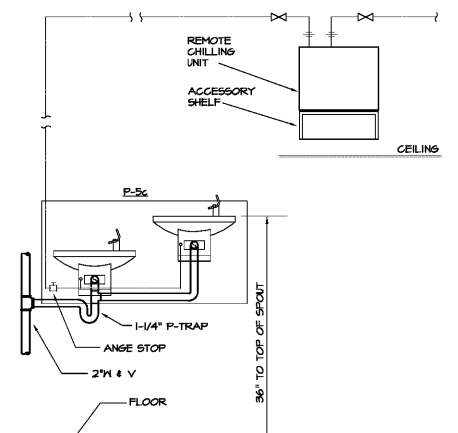


FIRE PROTECTION PLAN
 P-3.12 NO SCALE - SCHEMATIC ONLY



SEWAGE LIFT STATION DETAIL
 P-3.12 NO SCALE - SCHEMATIC ONLY



REMOTE EDF CHILLER DETAIL
 P-3.12 NO SCALE - SCHEMATIC ONLY

CHAPMAN GRIFFIN LANIER SUSSENBACH ARCHITECTS
 600 Grady Park • Atlanta, Georgia 30339 • Phone: 404.733.5499 • Fax: 404.733.6200

DOE FACILITY CODE: 660 -3066
RIVERWOOD HIGH SCHOOL-PHASE 3-8
AUDITORIUM / GYMNASIUM ADDITION
 5900 RAIDER DRIVE NW SANDY SPRINGS, GA 30328
 FULTON COUNTY SCHOOLS RFP NO. 411-18

DATE	NO.	DESCRIPTION
03/27/18		ISSUE PRELIMINARY SCHEDULE
06/19/18		ISSUE PRELIMINARY DESIGN DEVELOPMENT DOCUMENTS
08/17/18		ISSUE PRELIMINARY PERMIT SET
10/10/18		FINAL ISSUE SUBMITTAL READY FOR PROPOSAL

DETAILS-PLUMBING

PROJECT NO. 18015.02
 DATE 09/17/18
 DRAWN BY J.C.F.
 CHECKED BY B.L.S.

P-3.12

Order Plans

@

WWW.IDDLINE.COM