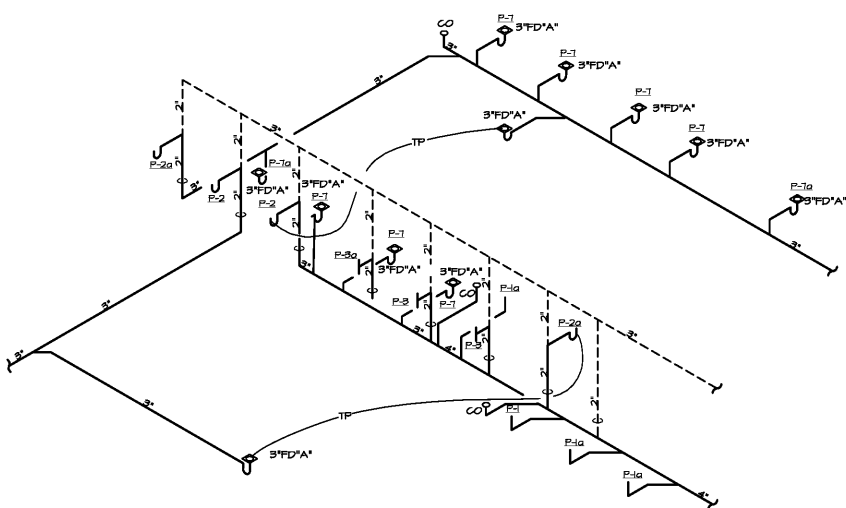
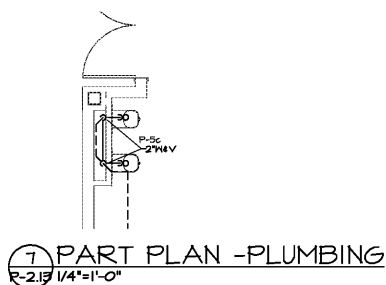


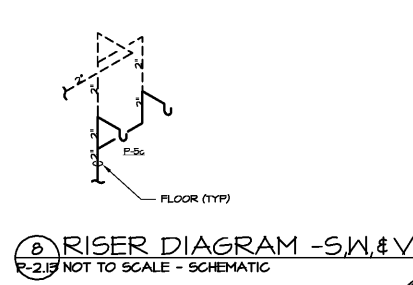
1 PART PLAN - PLUMBING
R-2.13 1/4"=1'-0"



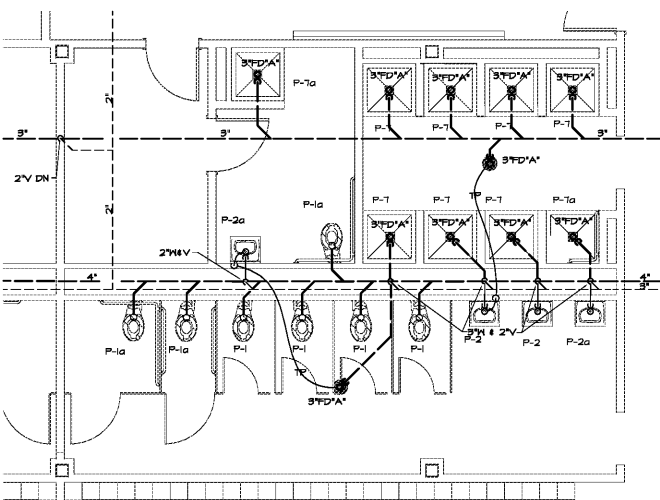
2 RISER DIAGRAM - S,W,&V
R-2.13 NOT TO SCALE - SCHEMATIC



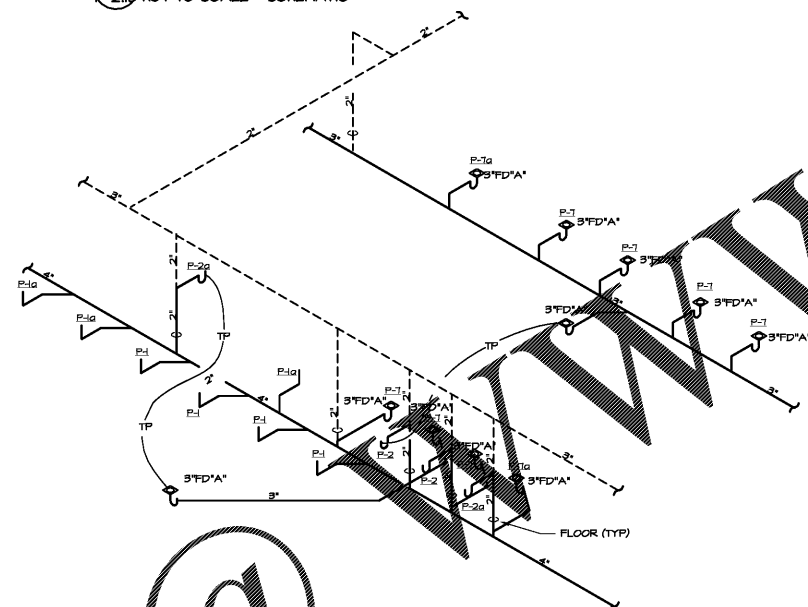
7 PART PLAN - PLUMBING
R-2.13 1/4"=1'-0"



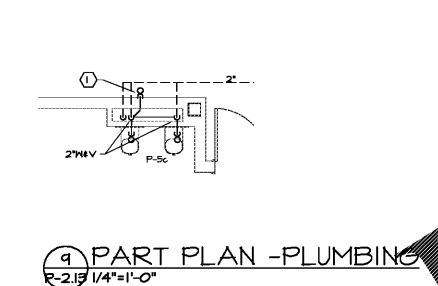
8 RISER DIAGRAM - S,W,&V
R-2.13 NOT TO SCALE - SCHEMATIC



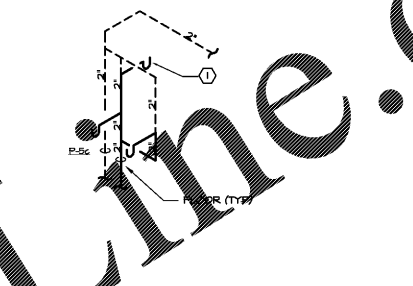
3 PART PLAN - PLUMBING
R-2.13 1/4"=1'-0"



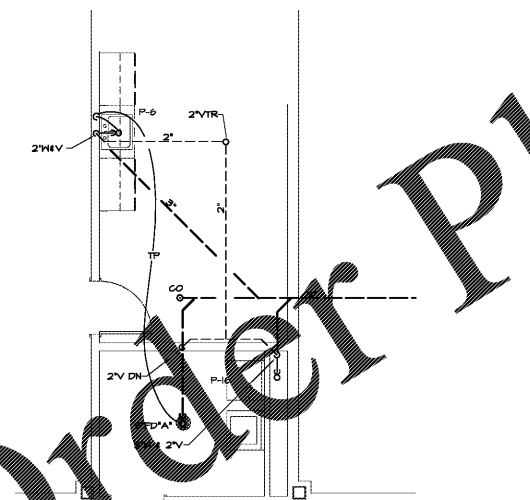
4 RISER DIAGRAM - S,W,&V
R-2.13 NOT TO SCALE - SCHEMATIC



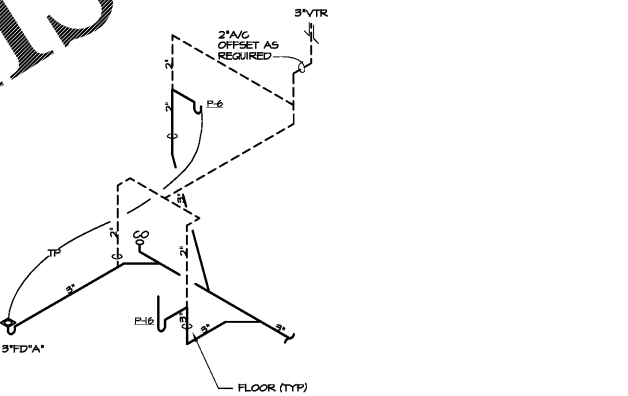
9 PART PLAN - PLUMBING
R-2.13 1/4"=1'-0"



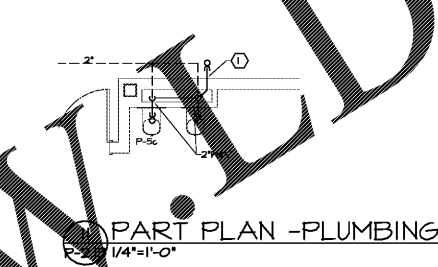
10 RISER DIAGRAM - S,W,&V
R-2.13 NOT TO SCALE - SCHEMATIC



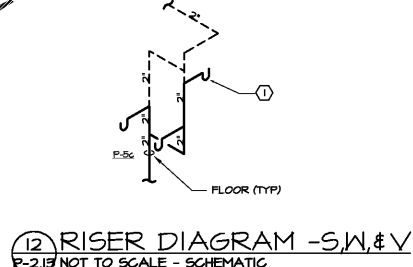
5 PART PLAN - PLUMBING
R-2.13 1/4"=1'-0"



6 RISER DIAGRAM - S,W,&V
R-2.13 NOT TO SCALE - SCHEMATIC



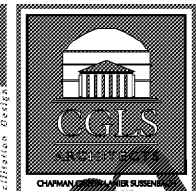
11 PART PLAN - PLUMBING
R-2.13 1/4"=1'-0"



12 RISER DIAGRAM - S,W,&V
R-2.13 NOT TO SCALE - SCHEMATIC

Order Plans

WWW.WLDLINE.COM



CHAPMAN GRIFFIN LANIER SUSSENBACH ARCHITECTS
OR RELEASED FOR INSTRUCTION
SPURLOCK ASSOCIATES, INC.
2970 Clairmont Rd., Suite 620
Atlanta, GA 30329
P: 404.633.0245
F: 404.633.1756



DATE	NO.	DESCRIPTION
03/27/18		ISSUE PRELIMINARY SCHEMATIC
06/19/18		ISSUE DESIGN DEVELOPMENT DOCUMENTS
08/17/18		ISSUE CONSTRUCTION DOCUMENTS
10/10/18		ISSUE PERMIT SET
11/07/18		FINAL ISSUE SUBMITTAL READY FOR PROPOSAL

DOE FACILITY CODE: 660 -3066
RIVERWOOD HIGH SCHOOL-PHASE 3-8 AUDITORIUM / GYMNASIUM ADDITION
6900 RAIDER DRIVE NW SANDY SPRINGS, GA 30328
FULTON COUNTY SCHOOLS RFP NO. 411-18

SHEET TITLE	
ENLARGED PART PLAN- PLUMBING	
PROJECT NO.	18015.02
DATE	09/17/18
DRAWN BY	J.C.F.
CHECKED BY	B.L.S.
SHEET NO.	
P-2.13	