

CHAPMAN GRIFFIN LANIER SUSSENBACH ARCHITECTS

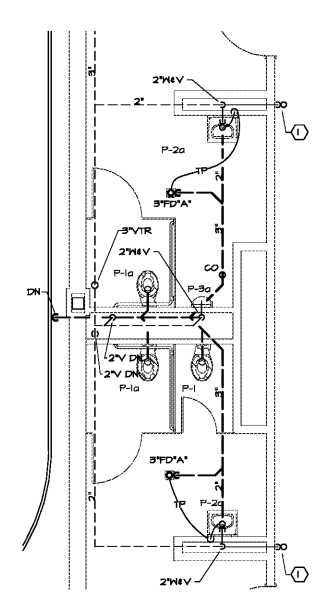
SPURLOCK ASSOCIATES, INC.  
2970 Clairmont Rd., Suite 620  
Atlanta, GA 30329  
P: 404.633.0245  
F: 404.633.1756



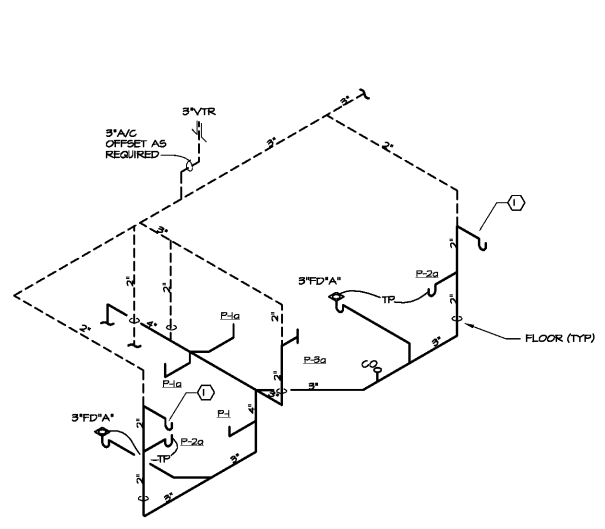
DATE	NO.	DESCRIPTION
03/27/18		ISSUE PRELIMINARY SCHEDULE
06/18/18		ISSUE DESIGN DEVELOPMENT DOCUMENTS
08/17/18		ISSUE CONSTRUCTION DOCUMENTS
10/10/18		ISSUE CHECK-1-SET/PERMIT SET
11/07/18		ISSUE FINAL CODE SUBMITTAL/ISSUE FOR PROPOSAL

DOE FACILITY CODE: 660 -3066  
**RIVERWOOD HIGH SCHOOL-PHASE 3-8 AUDITORIUM / GYMNASIUM ADDITION**  
 6900 RAIDER DRIVE NW SANDY SPRINGS, GA 30328  
 FULTON COUNTY SCHOOLS RFP NO. 411-18

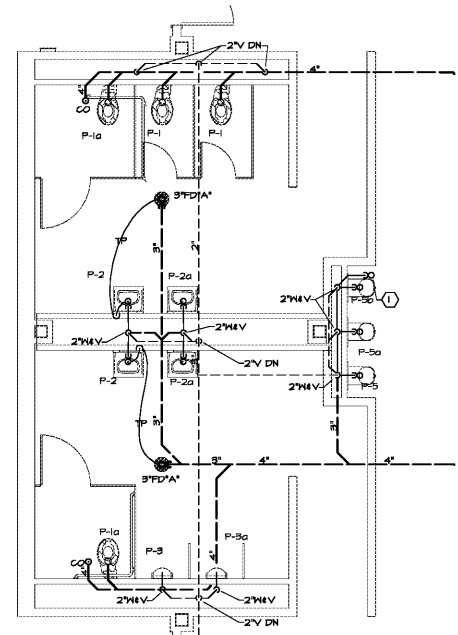
SHEET TITLE	
ENLARGED PART PLAN-PLUMBING	
PROJECT NO.	18015.02
DATE	09/17/18
DRAWN BY	J.C.F.
CHECKED BY	B.L.S.
SHEET NO.	
P-2.12	



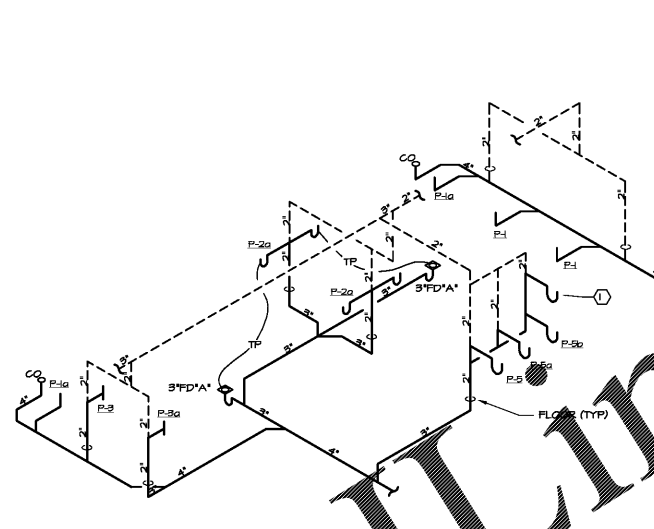
1 PART PLAN -PLUMBING  
P-2.12 1/4"=1'-0"



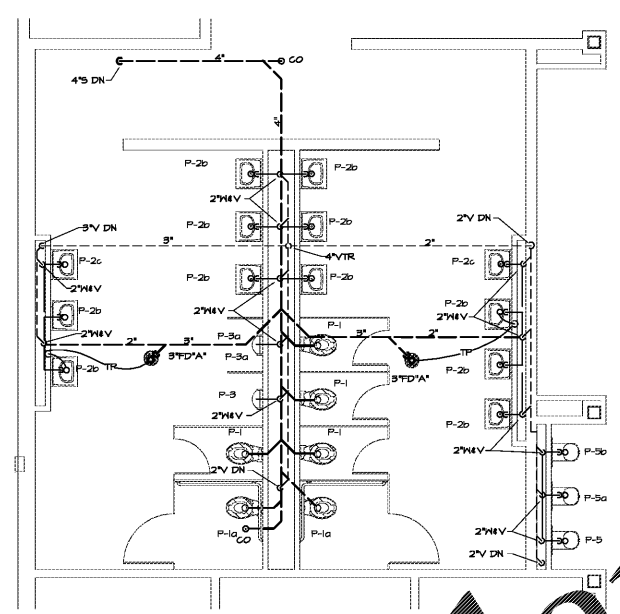
2 RISER DIAGRAM -S,W,&V  
P-2.12 NOT TO SCALE - SCHEMATIC



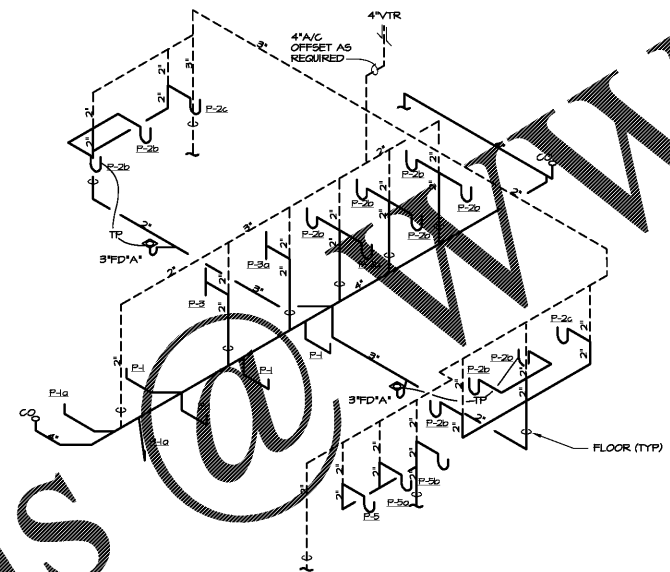
7 PART PLAN -PLUMBING  
P-2.12 1/4"=1'-0"



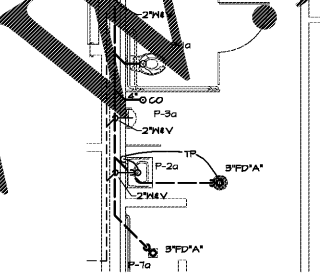
8 RISER DIAGRAM -S,W,&V  
P-2.12 NOT TO SCALE - SCHEMATIC



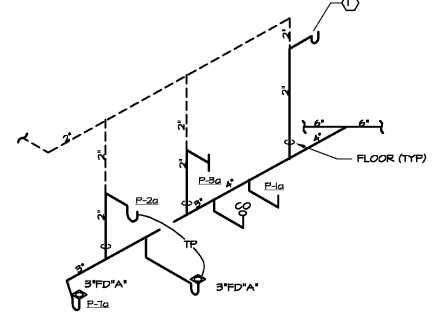
3 PART PLAN -PLUMBING  
P-2.12 1/4"=1'-0"



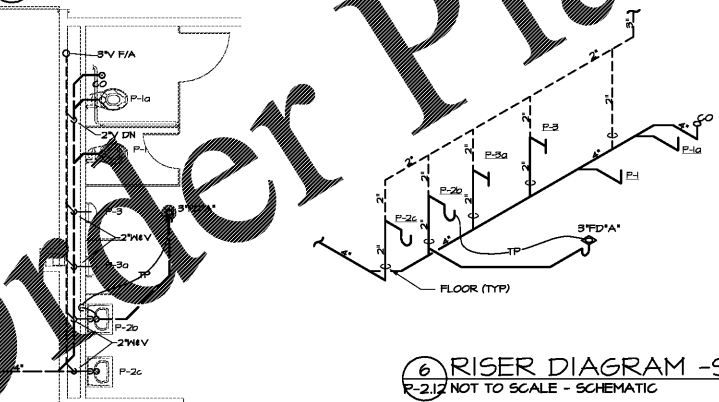
4 RISER DIAGRAM -S,W,&V  
P-2.12 NOT TO SCALE - SCHEMATIC



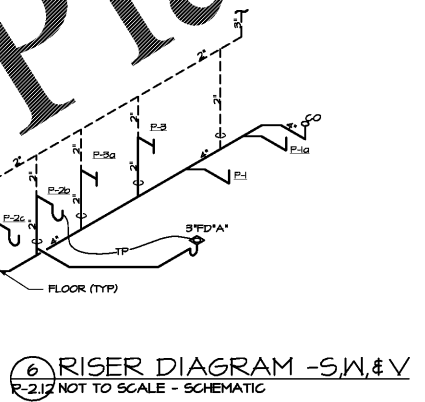
9 PART PLAN -PLUMBING  
P-2.12 1/4"=1'-0"



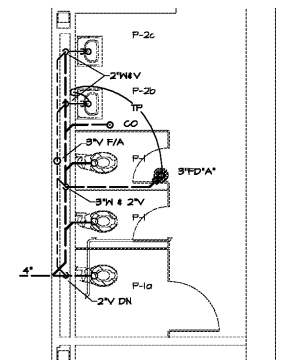
10 RISER DIAGRAM -S,W,&V  
P-2.12 NOT TO SCALE - SCHEMATIC



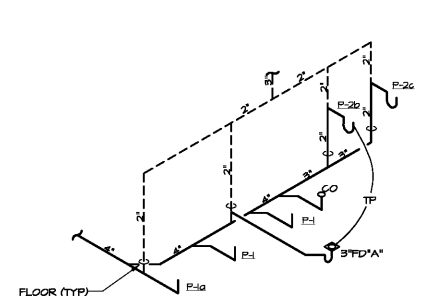
5 PART PLAN -PLUMBING  
P-2.12 1/4"=1'-0"



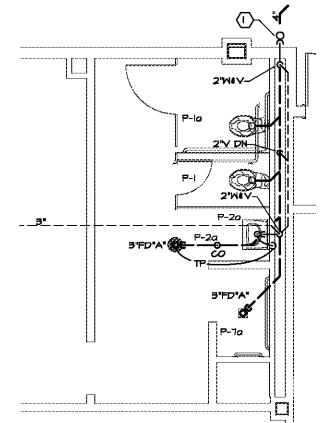
6 RISER DIAGRAM -S,W,&V  
P-2.12 NOT TO SCALE - SCHEMATIC



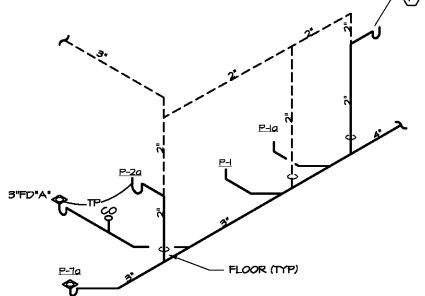
11 PART PLAN -PLUMBING  
P-2.12 1/4"=1'-0"



12 RISER DIAGRAM -S,W,&V  
P-2.12 NOT TO SCALE - SCHEMATIC



13 PART PLAN -PLUMBING  
P-2.12 1/4"=1'-0"



14 RISER DIAGRAM -S,W,&V  
P-2.12 NOT TO SCALE - SCHEMATIC

Order Plans