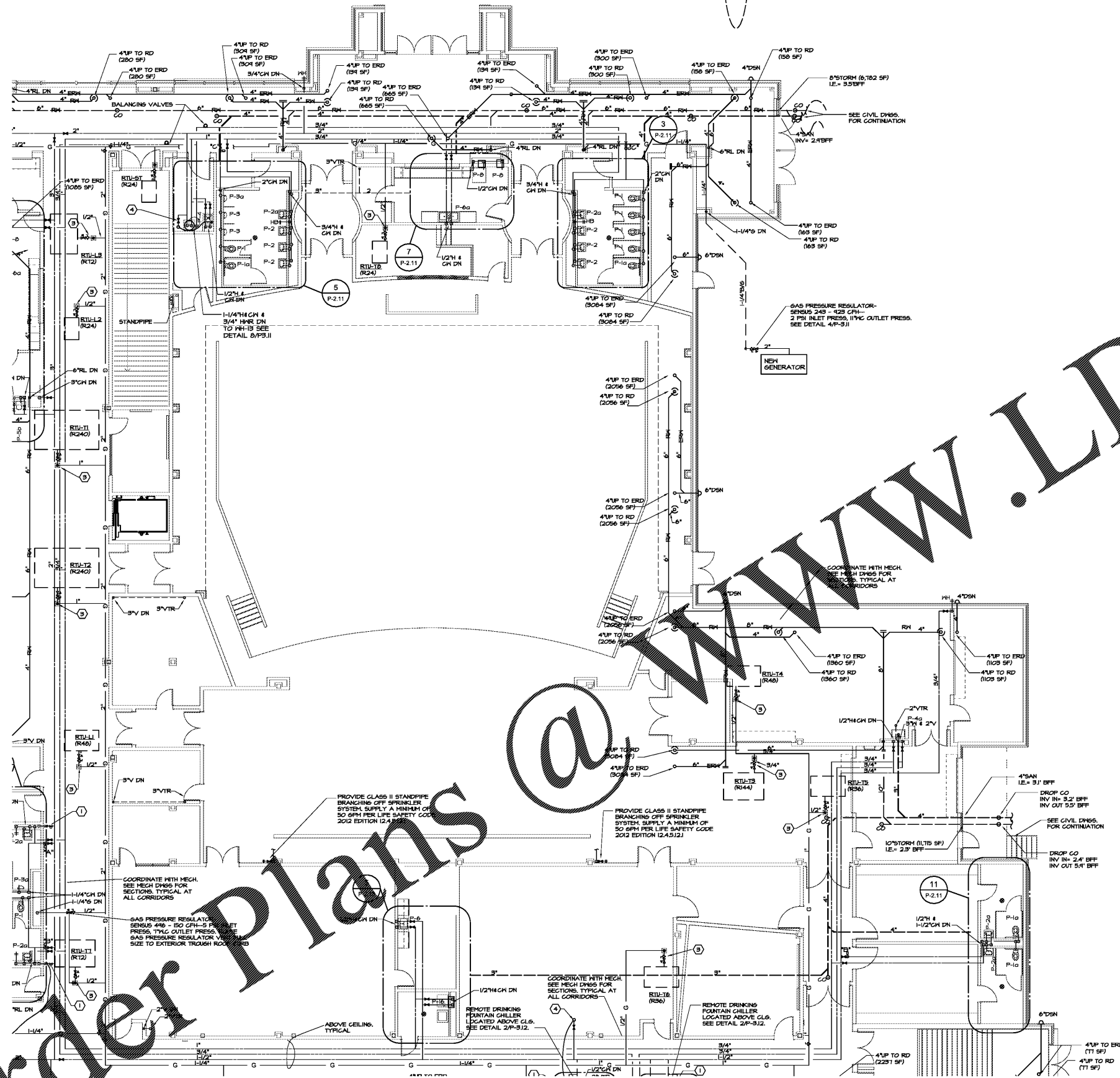
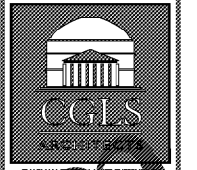
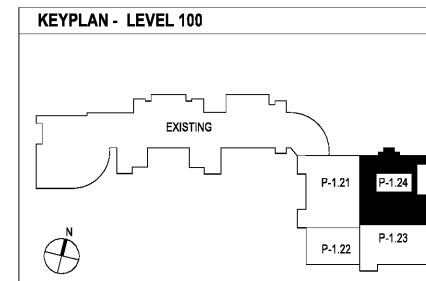


Order Plans @ WWW.LDILine.com



① LEVEL 100 FLOOR PLAN - PART 4- PLUMBING  
P-1.24 1/8"=1'-0"

SEE SHEET P-1.III FOR GENERAL AND REFERENCE NOTES



2970 Clairmont Rd., Suite 620  
Atlanta, GA 30329  
P: 404.633.0245  
F: 404.633.1756



DATE	NO.	DESCRIPTION
03/27/18		ISSUE PRELIMINARY SCHEDULE
06/18/18		DESIGN DEVELOPMENT
08/17/18		ISSUE CONSTRUCTION DOCUMENTS
10/10/18		ISSUE CHECKLIST-SC/ PERMIT SET
11/07/18		FINAL ISSUE SUBMITTAL READY FOR PROPOSAL
02/26/18	A	ADDENDUM NO. 3
04/27/18	A	BULLETIN NO. 1

DOE FACILITY CODE: 660 -3066  
**RIVERWOOD HIGH SCHOOL-PHASE 3-8  
AUDITORIUM / GYMNASIUM ADDITION**  
5900 RAIDER DRIVE NW SANDY SPRINGS, GA 30328  
FULTON COUNTY SCHOOLS RFP NO. 411-18

SHEET TITLE	
LEVEL 100 FLOOR PLAN-PART 4- PLUMBING	
PROJECT NO.	18015.02
DATE	09/17/18
DRAWN BY	J.C.F.
CHECKED BY	B.L.S.
SHEET NO.	
P-1.24	

CHAPMAN GRIFFIN LANIER SUSSENBACH ARCHITECTS  
600 Georgia Park, Suite 100, Atlanta, Georgia 30339 • Phone: 404.733.4333 • Fax: 404.733.4804