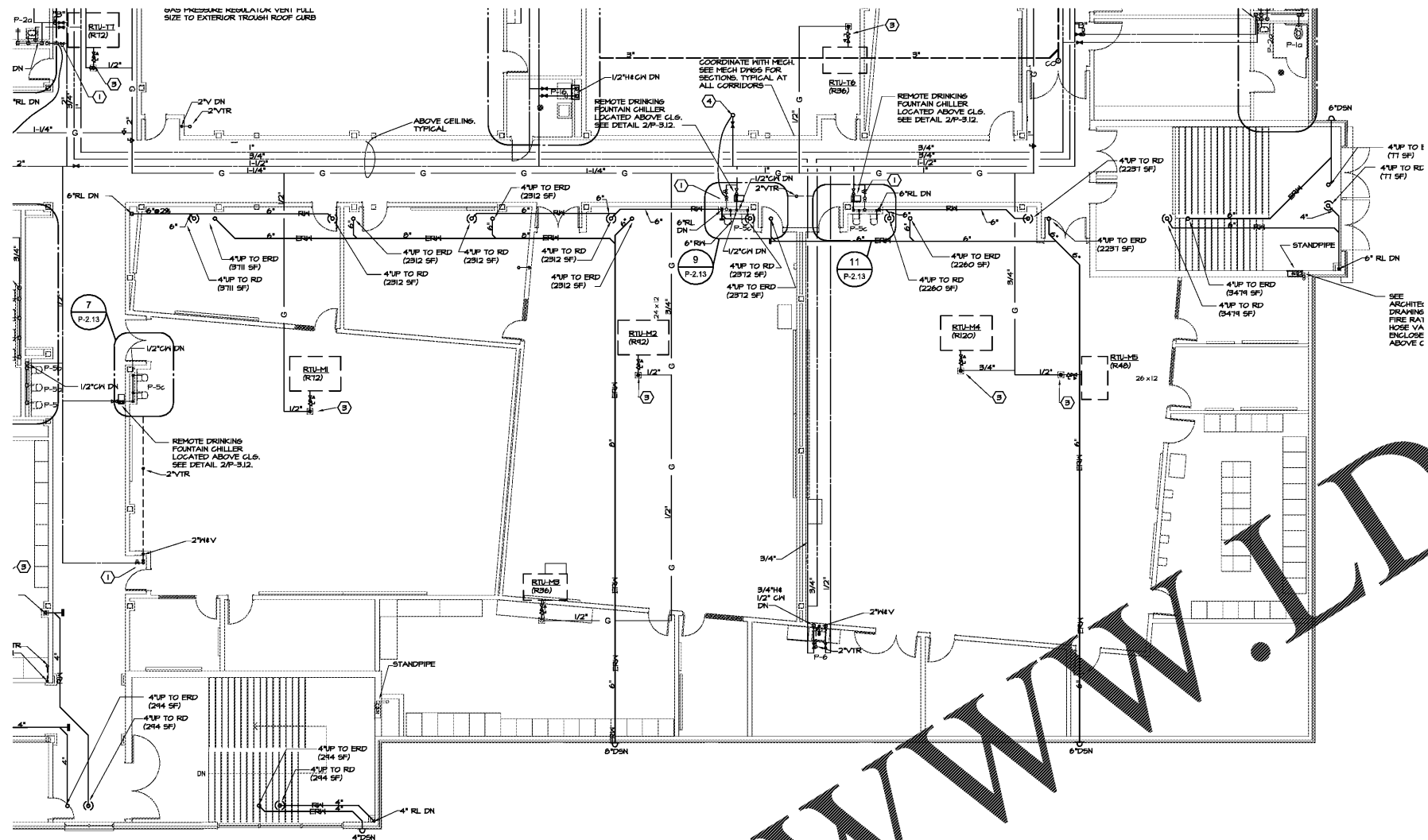
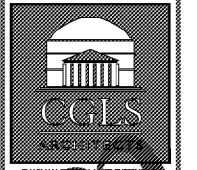
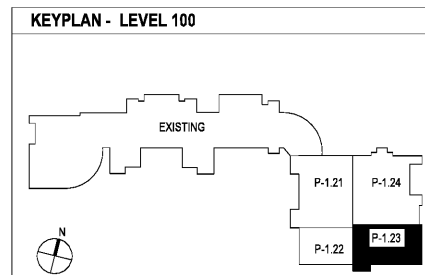


Order Plans @ www.LDILine.com



① LEVEL 100 FLOOR PLAN - PART 3- PLUMBING
P-1.23 1/8"=1'-0"

SEE SHEET P-1.11 FOR GENERAL AND REFERENCE NOTES



FOR RELEASE
OR CONSTRUCTION
SPURLOCK
ASSOCIATES, INC.
2970 Clairmont Rd., Suite 620
Atlanta, GA 30329
P: 404.633.0245
F: 404.633.1756



DATE	NO.	DESCRIPTION
03/27/18		ISSUE PRELIMINARY SCHEDULE
06/18/18		ISSUE PRELIMINARY DESIGN DEVELOPMENT DOCUMENTS
08/17/18		ISSUE CHECKLIST - SET / PERMIT SET
10/10/18		FINAL ISSUE SUBMITTAL READY FOR PROPOSAL
02/26/18	A	ADDENDUM NO. 2
04/27/18	A	BULLETIN NO. 1

DOE FACILITY CODE: 660 -3066
**RIVERWOOD HIGH SCHOOL-PHASE 3-8
AUDITORIUM / GYMNASIUM ADDITION**
5900 RAIDER DRIVE NW SANDY SPRINGS, GA 30328
FULTON COUNTY SCHOOLS RFP NO. 411-18

SHEET TITLE	
LEVEL 100 FLOOR PLAN - PART 3- PLUMBING	
PROJECT NO.	18015.02
DATE	09/17/18
DRAWN BY:	J.C.F.
CHECKED BY:	B.L.S.
SHEET NO.	
P-1.23	