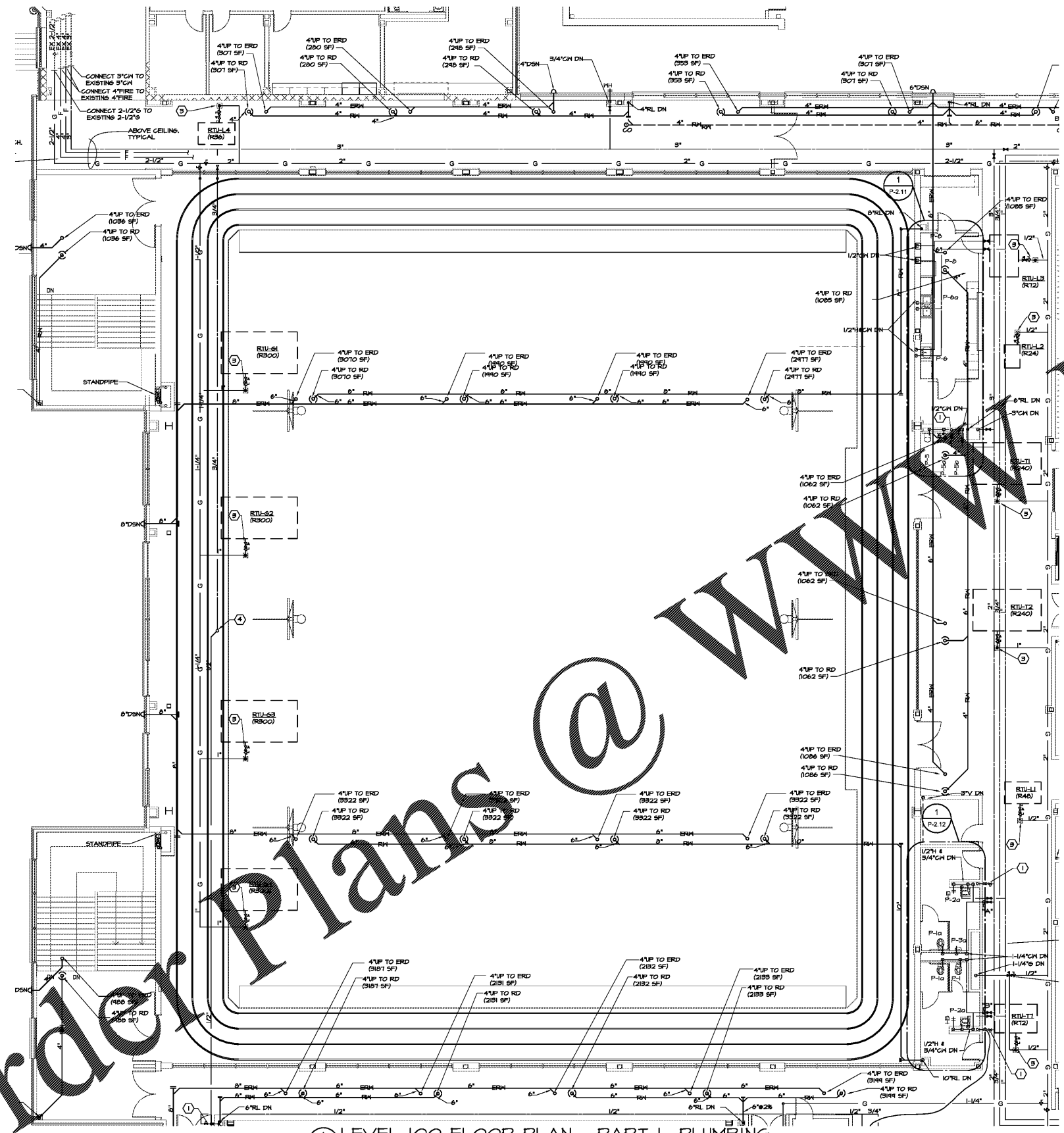
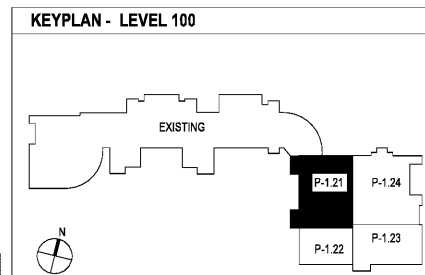


Order Plans @ [www.LDILine.com](http://www.LDILine.com)



1 LEVEL 100 FLOOR PLAN - PART I- PLUMBING  
P-1.21 1/8"=1'-0"

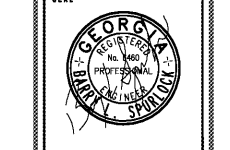
SEE SHEET P-1.II FOR GENERAL AND REFERENCE NOTES



ARCHITECTS  
PREPARED FOR  
CONSTRUCTION



2970 Clairmont Rd., Suite 620  
Atlanta, GA 30329  
P: 404.633.0245  
F: 404.633.1756



| DATE     | NO. | DESCRIPTION                              |
|----------|-----|--|
| 03/27/18 |     | ISSUE PRELIMINARY SCHEDULE               |
| 06/18/18 |     | ISSUE DESIGN DEVELOPMENT DOCUMENTS       |
| 08/17/18 |     | ISSUE CHECKLIST-S&P PERMIT SET           |
| 10/10/18 |     | FINAL ISSUE SUBMITTAL READY FOR PROPOSAL |
| 03/29/18 | A   | ADDENDUM NO. 3                           |
| 04/27/18 | A   | BULLETIN NO. 1                           |
| 05/11/18 | A   | BULLETIN NO. 2                           |

DOE FACILITY CODE: 660 -3066  
**RIVERWOOD HIGH SCHOOL-PHASE 3-8 AUDITORIUM / GYMNASIUM ADDITION**  
5900 RAIDER DRIVE NW SANDY SPRINGS, GA 30328  
FULTON COUNTY SCHOOLS RFP NO. 411-18

|  |          |
|--|----------|
| SHEET TITLE                            |          |
| LEVEL 100 FLOOR PLAN- PART I- PLUMBING |          |
| PROJECT NO.                            | 18015.02 |
| DATE                                   | 09/17/18 |
| DRAWN BY                               | J.C.F.   |
| CHECKED BY                             | B.L.S.   |
| SHEET NO.                              |          |
| P-1.21                                 |          |