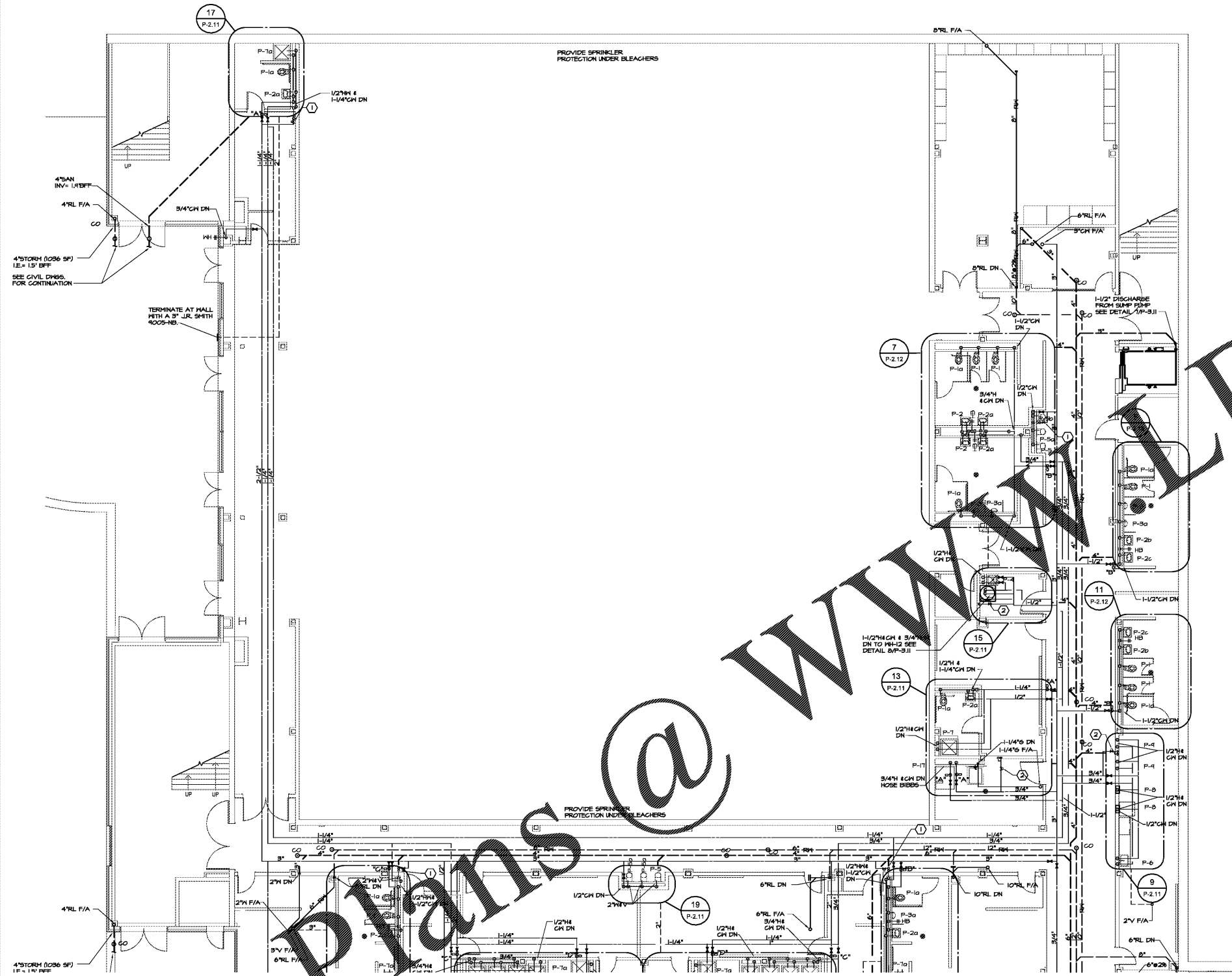


Order Plans @ [wvw.com](mailto:plans@wvw.com)



LEVEL 000 FLOOR PLAN - PART 1- PLUMBING
P-1.11 1/8"=1'-0"

GENERAL NOTES: (ALL PLUMBING SHEETS)

- A. CONTRACTOR SHALL NOTIFY ENGINEER IN WRITING OF ANY DISCREPANCIES OF EXISTING CONDITIONS FROM THAT SHOWN ON PLANS OR OF ANY CONDITION PROHIBITING WORK TO BE INSTALLED AS SHOWN ON PLANS BEFORE WORK IS BEGUN.
- D. DO NOT SCALE DRAWINGS FOR LOCATIONS OF PLUMBING FIXTURES OR ROOF DRAINS, EMERGENCY ROOF DRAINS, AND FLOOR DRAINS. SEE ARCHITECTURAL DRAWINGS FOR DIMENSIONS.
- E. VENTS THRU ROOF MUST BE LOCATED 10'-0" OR MORE FROM OUTSIDE AIR INTAKES ON HVAC SYSTEM AS PER CODE. SEE HVAC DRAWINGS FOR LOCATION OF INTAKES. PROVIDE OFFSETS IN VENTS AS NECESSARY TO MAINTAIN CLEARANCE.
- F. WHERE 2" VTR IS SHOWN ON PLANS, EXTEND 2" V UP TO BELOW ROOF, TRANSITION TO 3" VENT UP THRU ROOF TO ACCOMMODATE ROOF FLASHING.
- H. PLUMBING PIPING SHALL NOT BE INSTALLED IN HVAC SERVICE CLEARANCES. SEE MECHANICAL SHEETS FOR COORDINATION BETWEEN THE TRADES IN CORRIDORS & BUILDING SECTIONS.
- K. WHERE HANDICAPPED WATER CLOSETS ARE NOT CENTERED IN THE STALL, ROUGH-IN COLD WATER PIPING THAT FLUSH VALVE HANDLE WILL BE ON WIDE SIDE OF STALL.
- L. ALL EXTERIOR CLEANOUTS TO BE LOCATED EQUIDISTANT FROM FACE OF EXTERIOR WALLS.
- M. INSTALL VALVES IN WATER LINES ABOVE CORRIDOR CEILINGSS SO THE VALVE HANDLES ARE ACCESSIBLE. VALVES MUST NOT BE MORE THAN 4'0" ABOVE CEILING.
- N. COLD & HOT WATER PIPING DROPS IN CHASES SHALL REMAIN FULL LINE THROUGHOUT CHASE. UNLESS NOTED OTHERWISE. SEE FIXTURE CONNECTION SCHEDULE FOR ALL BRANCH STUB & PIPE SIZES. REFER TO TYPICAL WATER RISER DETAIL 07P-3.11.
- O. SUBJECT TO APPROVAL OF ARCHITECT / ENGINEER / PRECASTER, PRECAST PRODUCTS SHALL BE DRILLED PROVIDED NO CONTACT IS MADE WITH THE PRECASTING STEEL. SHOULD SPALLING OCCUR, IT SHALL BE REPAIRED BY THE RESPECTIVE TRADE MAKING THE REPAIR. FOLLOWING REVIEW AND APPROVAL OF THE REPAIR METHOD BY THE ARCHITECT / ENGINEER / PRECASTER.
- P. GENERAL CONTRACTOR AND MECHANICAL / PLUMBING / ELECTRICAL CONTRACTORS (OR SUPPLIERS OF OTHER MISCELLANEOUS ITEMS) SHALL COORDINATE WITH ARCHITECT / ENGINEER & PRECAST MANUFACTURER FOR ALL FASTENERS, ANCHORS AND SUPPORT INTO PRECAST MEMBERS FOR BOTH THEIR TYPES AND THEIR LOCATIONS.
- Q. WHERE PIPING IS INSTALLED UNDER PERIMETER FOOTINGS, PIPING SHALL BE INSTALLED IN STEEL CASING. CASING SHALL EXTEND A MINIMUM OF 1'-0" BEYOND THE EDGE OF THE FOOTINGS.
- R. SEE DETAILS SHOWING REFERENCED FROM TOP OF FLOOR SLAB.
- S. CONFIRM EXISTING OF EXISTING SEWERS SHOWN ON THE DRAWINGS BEFORE INSTALLING ANY PIPING. RAINWATER PIPE SIZING IS BASED ON 24" RAINFALL RATE. PIPING SHALL BE RUN AT 1% SLOPE, UNLESS NOTED OTHERWISE FOR INCREASED LIFE CARRY CAPACITY IN ACCORDANCE WITH THE IPC TABLES.
- U. IF EXISTING PIPING EQUIPMENT AND PIPING HAS DRAWN FROM AS-BUILT DRAWINGS, ACTUAL LOCATIONS AND SIZES MAY VARY. CONTRACTOR SHALL FIELD VERIFY SIZES AND LOCATION.
- V. CONTRACTOR SHALL COORDINATE ROUTING OF EXPOSED PIPING WITH ARCHITECT PRIOR TO INSTALLATION.
- W. ALL EXTERIOR GAS PRESSURE REGULATORS SHALL BE INSTALLED SO THAT THE RELIEF VENT DISCHARGES DOWNWIND VIA REGULATOR ORIENTATION OR WITH 90 DEGREE ELBOW.
- X. WHERE STRUCTURAL BEAMS PREVENT PIPING FROM TRANSITIONS BETWEEN FLOORS, SEE DETAIL 3P-3.11 FOR OFFSET DETAIL.
- Y. PROVIDE DRY SPRINKLER HEADS AT UNCONDITIONED SPACES.
- Z. CONTRACTOR SHALL COORDINATE WATER COOLER LOCATIONS WITH ELECTRICAL PRIOR TO INSTALLATION. ELECTRICAL OUTLETS SHALL BE LOCATED WITHIN WATER COOLER CABINET, IN CUT OUT PROVIDED BY THE WATER COOLER MANUFACTURER OR CENTERED AND DIRECTLY BELOW WATER COOLER CABINET, IF REQUIRED BY ELECTRICAL INSPECTOR TO BE LOCATED OUTSIDE OF WATER COOLER CABINET.
- AA. CONTRACTOR SHALL PREP, PRIME, AND PAINT EXTERIOR GAS PIPING. COORDINATE COLOR WITH OWNER/ARCHITECT.
- BB. CONTRACTOR SHALL PROVIDE THE NECESSARY ACTIVITIES TO ASSIST AND SUPPORT THE SYSTEMS VERIFIER IN MEETING THE REQUIREMENTS OF SECTION 09113 - GENERAL REQUIREMENTS FOR SYSTEMS VERIFICATION.

FIRE MARSHAL NOTES: (ALL PLUMBING SHEETS)

- A. ALL PENETRATIONS THROUGH FIRE RATED WALLS AND FLOORS SHALL BE FIRE STOPPED WITH 3M FIRE BARRIER OR EQUAL PRODUCT MEETING UL 1414 OR ASTM E814 FIRE RATINGS IN ACCORDANCE WITH ARTICLE 300-21 OF THE NATIONAL ELECTRICAL CODE. SEE ARCHITECTURAL FOR DETAILS.
- B. SEE MECH DWGS FOR PORTIONS OF THE BUILDING WITH RETURN AIR PLENUMS. ALL MATERIALS EXPOSED WITHIN PLENUMS ARE REQUIRED TO BE NONCOMBUSTIBLE OR SHALL HAVE A FLAME SPREAD INDEX OF NOT MORE THAN 25 AND A SMOKE DEVELOPED INDEX OF NOT MORE THAN 50 AS DETERMINED IN ACCORDANCE WITH ASTM E84.
- C. A COMPLETE SET OF SPRINKLER SHOP DRAWINGS SHALL BE SUBMITTED TO THE CITY OF SANDY SPRINGS FIRE MARSHALL'S OFFICE, APPROVED, AND A PERMIT OBTAINED BEFORE ANY SPRINKLER WORK IS INSTALLED.
- D. CONTRACTOR TO OBTAIN THE CITY OF SANDY SPRINGS FIRE MARSHAL APPROVAL BEFORE MAKING MODIFICATIONS TO THE SPRINKLER SYSTEM. THIS MAY REQUIRE SPRINKLER SHOP DRAWINGS TO BE SUBMITTED. A PERMIT MUST BE OBTAINED BEFORE ANY SPRINKLER WORK IS INSTALLED.

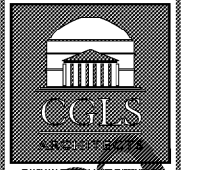
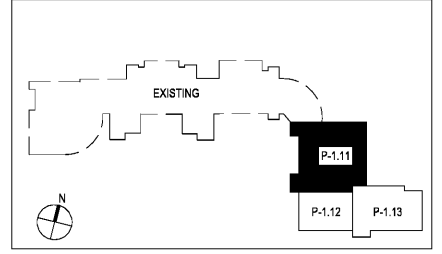
REFERENCED NOTES: (ALL PLUMBING SHEETS)

- 1 CONDENSATE DRAIN WITH TRAP PRIMER ABOVE CEILING. SEE DETAIL 10P-3.11. INSTALL ON 2"X 2" V STACK IN MALL/CHASE - UNLESS SHOWN/NOTED OTHERWISE, EXTEND 2"V TO 3"VTR, OFFSETTING ABOVE CEILING AS REQUIRED. TYPICAL.
- 2 TRAP PRIMER ABOVE CEILING. SEE DETAIL 10P-3.11
- 3 GAS PIPE UP THRU PIPE CURB TO MECHANICAL EQUIPMENT. SEE DETAIL 4P-3.11. SUPPORT PIPE TO STRUCTURE IMMEDIATELY PRIOR TO TURNING UP THRU CURB. TYPICAL.
- 4 3/4"CH UP TO ROOF HYDRANT MOUNTED ON ROOF. CONNECT 1/2" COPPER DRAIN LINE TO 1/2" DRAIN CONNECTION AT BASE OF HYDRANT IN CEILING SPACE AND ROUTE/DRAIN TO CONDENSATE P-TRAP OR MOP BASIN. COORDINATE WITH PLUMBING DRAIN PIPING. SEE 12P-3.11.
- 5 SEE DETAIL 4P-3.11 FOR GAS CONNECTION.

SPRINKLER NOTES: (ALL PLUMBING SHEETS)

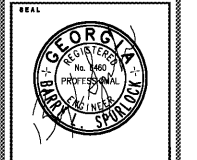
- A. SPRINKLER CONTRACTOR SHALL COORDINATE ROUTING OF EXPOSED SPRINKLER PIPING WITH ARCHITECT PRIOR TO SUBMITTING SHOP DRAWINGS TO THE FIRE MARSHAL FOR APPROVAL. TYPICAL.
- B. INSTALL SECURECAP 4043 AT ALL STANDPIPE HOSE VALVES

KEYPLAN - LEVEL 000



CCLS
ARCHITECTS & ENGINEERS, INC.
2970 Clairmont Rd., Suite 620
Atlanta, GA 30329
P: 404.633.0245
F: 404.633.1756

SPURLOCK ASSOCIATES, INC.
2970 Clairmont Rd., Suite 620
Atlanta, GA 30329
P: 404.633.0245
F: 404.633.1756



DATE	NO.	DESCRIPTION
03/27/18		ISSUE PRELIMINARY SUBMITTAL
06/19/18		DESIGN DEVELOPMENT
06/17/18		ISSUE CONSTRUCTION DOCUMENTS
06/17/18		ISSUE CONSTRUCTION PERMIT SET
10/10/18		FINAL ISSUE SUBMITTAL
11/07/18		ISSUE FOR PROPOSAL

DOE FACILITY CODE: 660 -3066
RIVERWOOD HIGH SCHOOL-PHASE 3-8 AUDITORIUM / GYMNASIUM ADDITION
5900 RAIDER DRIVE NW SANDY SPRINGS, GA 30328
FULTON COUNTY SCHOOLS RFP NO. 411-18

CHAPMAN GRIFFIN LANIER SUSSENBACH ARCHITECTS
400 Georgia Pkwy., Suite 100 • Atlanta, Georgia 30329 • Phone: 404.733.4333 • Fax: 404.733.4304
SHEET TITLE
LEVEL 000 FLOOR PLAN - PART 1- PLUMBING
PROJECT NO. 18015.02
DATE 09/17/18
DRAWN BY J.C.F.
CHECKED BY B.L.S.
SHEET NO.
P-1.11