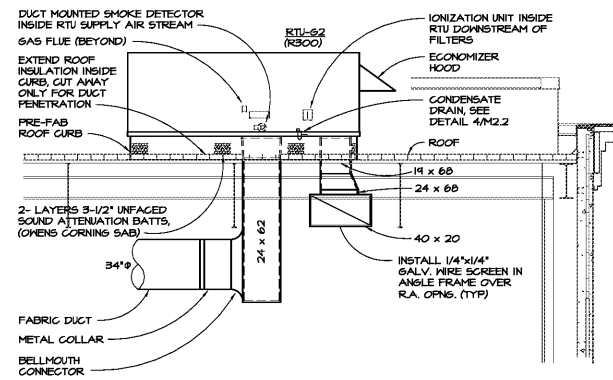
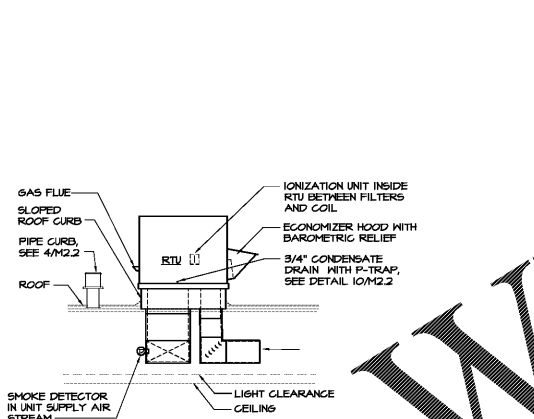


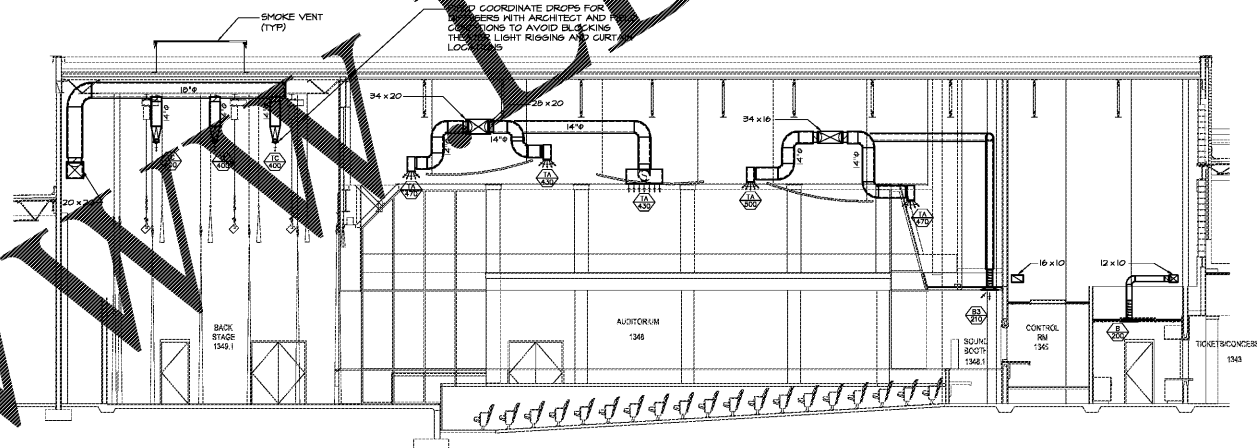
NOTE: INSTALLATION OTHER RTU'S IS SIMILAR
1 SECTION THRU MAIN GYM
 M2.3 1/8"=1'-0"



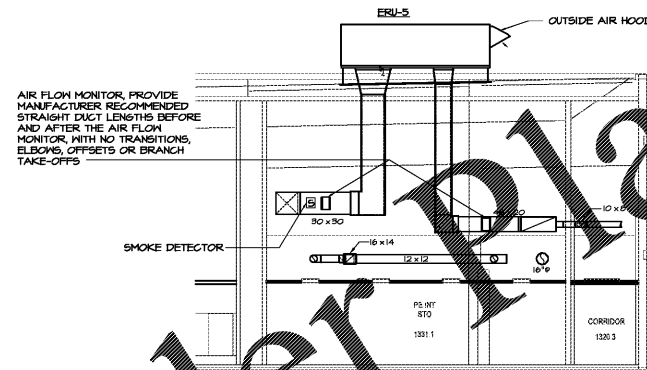
2 SECTION AT RTU-G2
 M2.3 1/4"=1'-0"



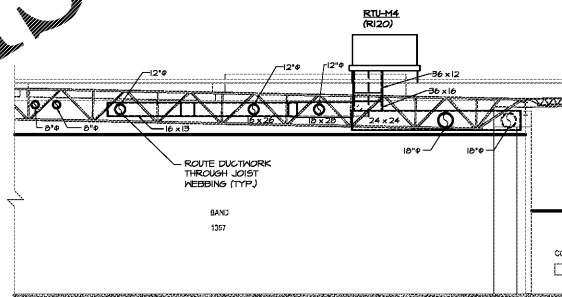
3 TYPICAL 12 TON AND UNDER RTU DETAIL
 M2.3 1/4"=1'-0"



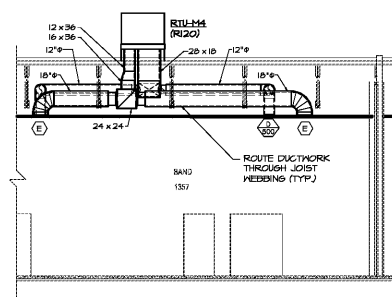
4 SECTION THRU THEATER / STAGE
 M2.3 1/8"=1'-0"



5 PIPE INT. STORAGE
 M2.3 1/8"=1'-0"




6 BAND ROOM SECTION 1
 M2.3 1/8"=1'-0"




7 BAND ROOM SECTION 2
 M2.3 1/8"=1'-0"

WWW.DIYLINE.COM




CHAPMAN GRIFFIN LANIER SUSSENBACH ARCHITECTS

RELEASED FOR CONSTRUCTION



2970 Clairmont Rd., Suite 420
 Atlanta, GA 30329
 P: 404.633.0245
 F: 404.633.1736



DATE	NO.	DESCRIPTION
03/27/18		ISSUE PRELIMINARY SCHEDULE
06/14/18		ISSUE PRELIMINARY DESIGN DEVELOPMENT
08/17/18		ISSUE CONSTRUCTION DOCUMENTS
10/17/18		ISSUE CHECK-SET / PERMIT SET
11/07/18		FINAL ISSUE SUBMITTAL / READY FOR PROPOSAL

DOE FACILITY CODE: 660 -3066

RIVERWOOD HIGH SCHOOL-PHASE 3-8 AUDITORIUM / GYMNASIUM ADDITION

5900 RAIDER DRIVE NW SANDY SPRINGS, GA 30328
 FULTON COUNTY SCHOOLS RFP NO. 411-18

CHAPMAN GRIFFIN LANIER SUSSENBACH ARCHITECTS
 400 GULFVIEW DRIVE, SUITE 100, ATLANTA, GA 30328

SHEET TITLE
HVAC DETAILS

PROJECT NO.
 16015.02

DATE
 09/17/18

DRAWN BY
 CPAMWD.

CHECKED BY
 BLS.

SHEET NO.
M-2.3

Order Plans @