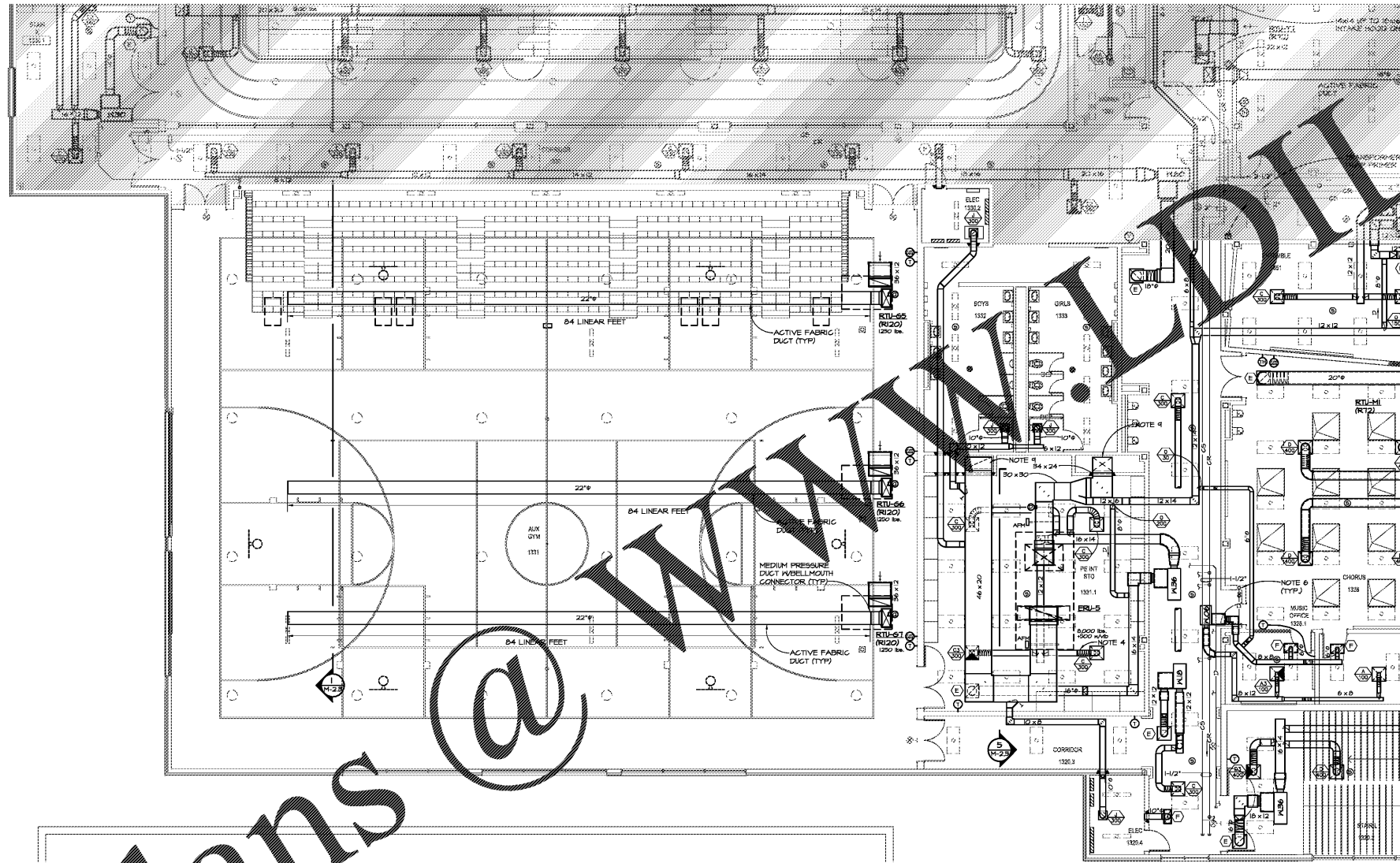
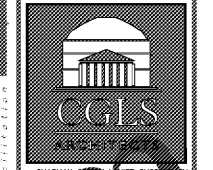
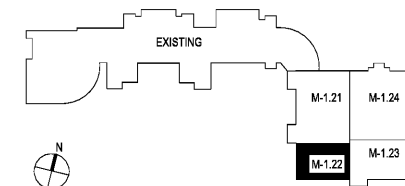


Order Plans @ www.dl1ine.com



1 LEVEL 100 FLOOR PLAN - PART 2- HVAC
1/8"=1'-0"

KEYPLAN - LEVEL 100



2970 Clairmont Rd, Suite 620
Atlanta, GA 30329
P: 404.633.0245
F: 404.633.1736



DATE	NO.	DESCRIPTION
03/27/18		ISSUE PRELIMINARY SUBMITTAL / DESIGN DEVELOPMENT DOCUMENTS
06/14/18		ISSUE CONSTRUCTION DOCUMENTS
08/17/18		ISSUE CHECKLIST-SET / PERMIT SET
10/10/18		FINAL ISSUE SUBMITTAL / READY FOR PROPOSAL

DOE FACILITY CODE: 660 -3066
**RIVERWOOD HIGH SCHOOL-PHASE 3-8
AUDITORIUM / GYMNASIUM ADDITION**
5900 RAIDER DRIVE NW SANDY SPRINGS, GA 30328
FULTON COUNTY SCHOOLS RFP NO. 411-18

SHEET TITLE	LEVEL 100 FLOOR PLAN-PART 2- HVAC
PROJECT NO.	18015.02
DATE	09/17/18
DRAWN BY	CPAMWD.
CHECKED BY	BLS.
SHEET NO.	M-1.22