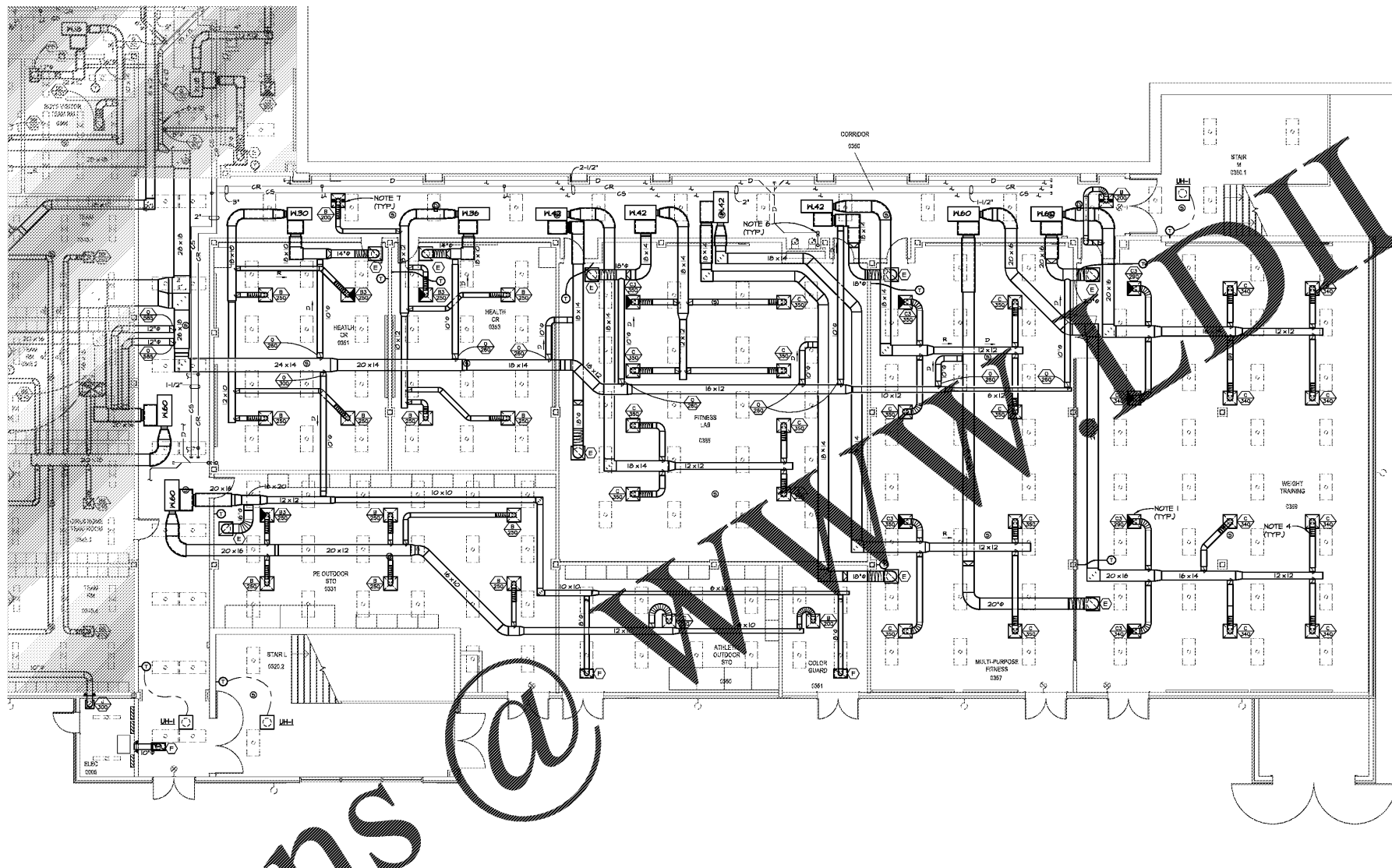
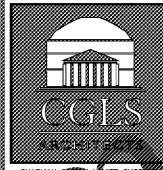
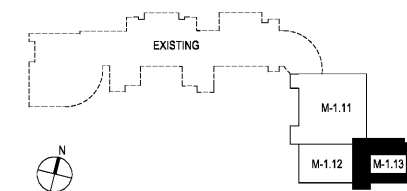


Order Plans @



1 LEVEL 000 FLOOR PLAN - PART 3 - HVAC
M-1.13 1/8"=1'-0"

KEYPLAN - LEVEL 000



CHAPMAN GRIFFIN LANIER SUSSENBACH ARCHITECTS
INC.
RELEASED FOR CONSTRUCTION



2970 Clairmont Rd., Suite 420
Atlanta, GA 30329
P: 404.633.0245
F: 404.633.1736



DATE	NO.	DESCRIPTION
03/27/18		ISSUE PRELIMINARY SUBMITTAL
06/14/18		ISSUE PRELIMINARY DESIGN DEVELOPMENT DOCUMENTS
08/17/18		ISSUE CHECKLIST-SET / PERMIT SET
10/10/18		FINAL ISSUE SUBMITTAL
11/07/18		ISSUE FOR PROPOSAL

DOE FACILITY CODE: 660 -3066
**RIVERWOOD HIGH SCHOOL-PHASE 3-8
AUDITORIUM / GYMNASIUM ADDITION**
5900 RAIDER DRIVE NW SANDY SPRINGS, GA 30328
FULTON COUNTY SCHOOLS RFP NO. 411-18

SHEET TITLE	
LEVEL 100 FLOOR PLAN-PART 3- HVAC	
PROJECT NO.	18015.02
DATE	09/17/18
DRAWN BY	CPAMWD.
CHECKED BY	BLS.
SHEET NO.	
M-1.13	