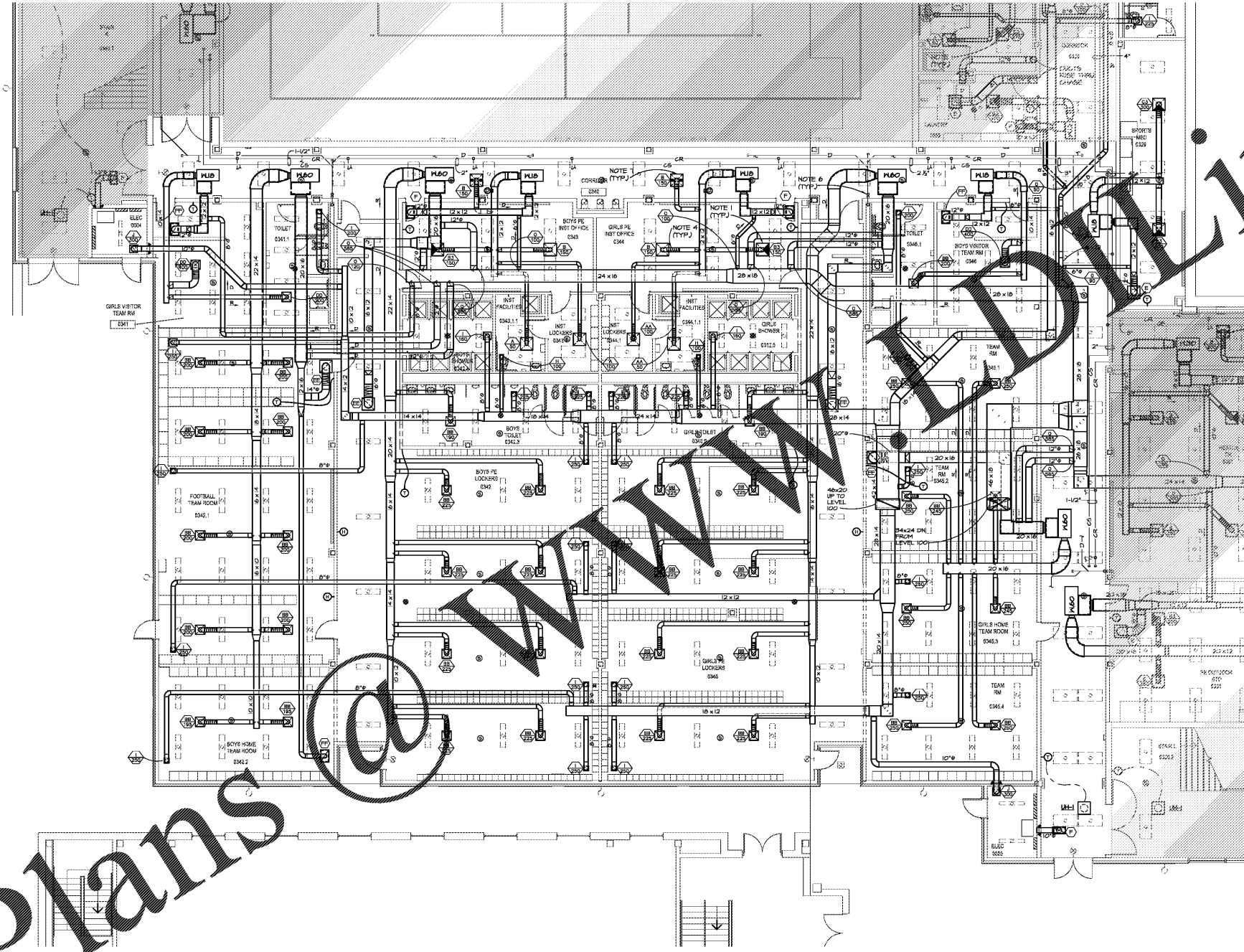
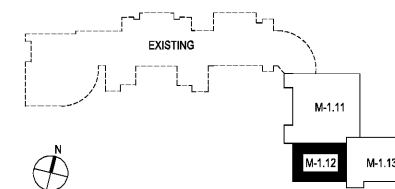


Order Plans @ www.LanierGriffin.com



LEVEL 000 FLOOR PLAN - PART 2- HVAC
1/8" = 1'-0"

KEYPLAN - LEVEL 000



CHAPMAN GRIFFIN LANIER SUSSENBACH ARCHITECTS
 4500 CHAPMAN DRIVE, SUITE 100, SANDY SPRINGS, GA 30328
 P. 404.633.3033 F. 404.633.3034

CHAPMAN GRIFFIN LANIER SUSSENBACH ARCHITECTS
 2018

RELEASED FOR CONSTRUCTION

SPURLOCK ASSOCIATES INC
 2870 Clairmont Rd., Suite 620
 Atlanta, GA 30329
 P. 404.633.0245
 F. 404.633.1756

SEAL
 GEORGIA PROFESSIONAL ENGINEER
 STATE OF GEORGIA
 SPURLOCK ASSOCIATES INC

DATE	NO.	DESCRIPTION
03/27/18		ISSUE PRELIMINARY SUBMITTAL
05/18/18		ISSUE PRELIMINARY SUBMITTAL
09/17/18		ISSUE CONSTRUCTION PERMIT SET
10/10/18		FINAL CODE SUBMITTAL
11/01/18		ISSUED FOR PROPOSALS

**RIVERWOOD HIGH SCHOOL-PHASE 3-8
 AUDITORIUM / GYMNASIUM ADDITION**

5900 RAIDER DRIVE NW SANDY SPRINGS, GA 30328
 FULTON COUNTY SCHOOLS REF NO. 411-19

PROJECT NO. 16015.02
DATE 09/17/18
DRAWN BY CPAMR/D
DESIGNED BY BLS
SHEET NO. M-1.12