

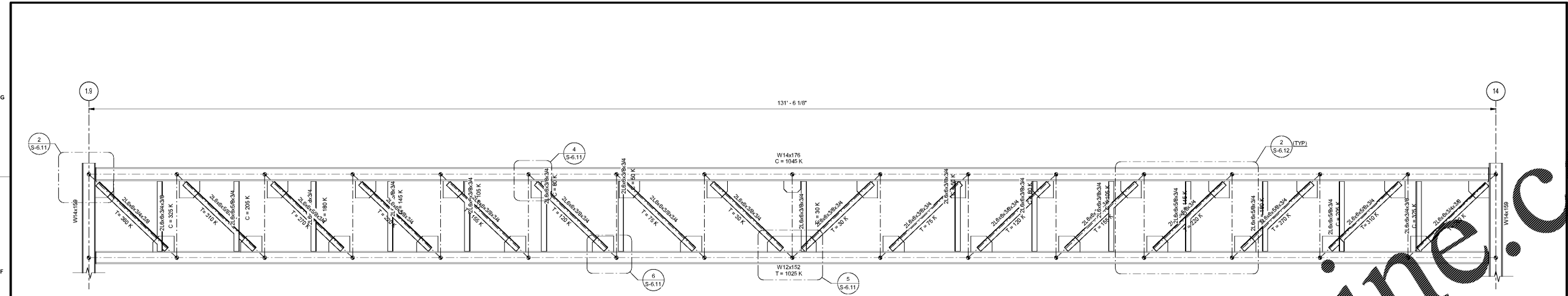
DATE	NO.	DESCRIPTION
06/19/18		FOR CONSTRUCTION DOCUMENTS
09/17/18		FOR CHECK-SET/PERMITS
10/15/18		FINAL ISSUE SUBMITTED FOR PROPOSALS
11/01/18		

CHAPMAN GRIFFIN LANIER SUSENBACH ARCHITECTS
 2500 Cumberland Pkwy., Suite 350, Atlanta, Ga 30339 Phone: 404.733.5493
RIVERWOOD HIGH SCHOOL - PHASE 3 - AUDITORIUM/GYMNASIUM ADDITION
 5900 RAIDER DRIVE NW SANDY SPRINGS, GA 30328
 FULTON COUNTY SCHOOLS RFP NO. XXX-XX

TRUSS ELEVATIONS & SECTIONS

PROJECT NO. 0217302.00
 DATE: 09/17/18
 DRAWN BY: RAS
 CHECKED BY: ACB

S-6.11



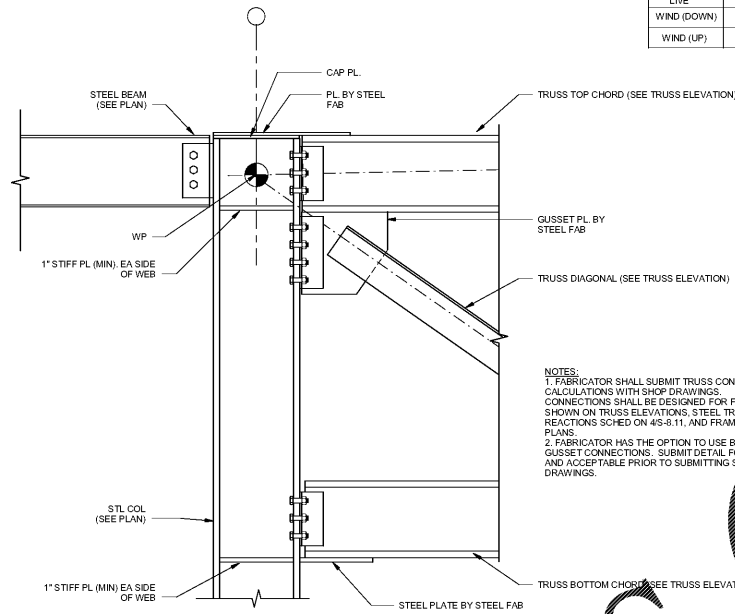
STEEL TRUSS T1 ELEVATION

SCALE: 1/4" = 1'-0"

STEEL TRUSS T1 NOTES:

- FABRICATOR SHALL ROOF TOP & BOTT CHORDS TO PROVIDE 2" OF CAMBER @ MIDSPAN OF TRUSS.
- GC SHALL CONSIDER SPECIAL ERECTION PROCEDURES TO MAINTAIN TRUSS STABILITY.
- FABRICATOR SHALL SUBMIT TRUSS CONNECTION CALCULATIONS WITH SHOP DRAWINGS. CONNECTIONS SHALL BE DESIGNED FOR FORCES INDICATED.
- USE ASD. DATA ARE GIVEN AT SERVICE LEVEL.
 "C" DENOTES COMPRESSION FORCE.
 "T" DENOTES TENSION FORCE.
- FABRICATOR SHALL DETAIL TRUSS MEMBERS FOR SPLICE AT THIRD POINTS OF TRUSS. SPLICES SHALL BE DESIGNED FOR FORCES SHOWN BELOW.

LOAD CASE	TOP CHORD	WEB DIAGONAL	BOTT CHORD
DEAD	120K	20K	120K
LIVE	90K	20K	55K
WIND (DOWN)	50K	20K	30K
WIND (UP)	90K	20K	55K



TRUSS CONNECTION AT COLUMN

SCALE: 1" = 1'-0"

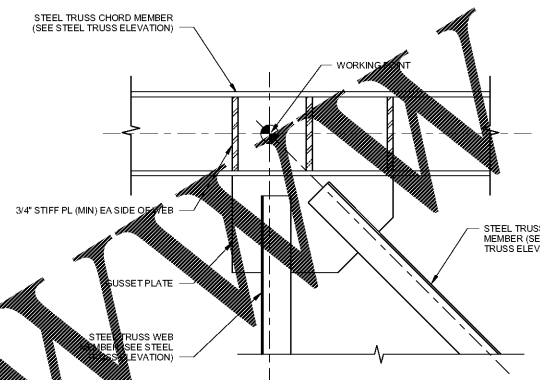
STEEL TRUSS T1 REACTIONS

LOAD CASE	TOP CHORD	TOM CHORD
DEAD	150K	0K
LIVE	15K	
WIND (DOWN)	65K	
WIND (UP)	120K	0K

NOTES:
 1. DATA SHOWN ARE AT SERVICE LEVEL.

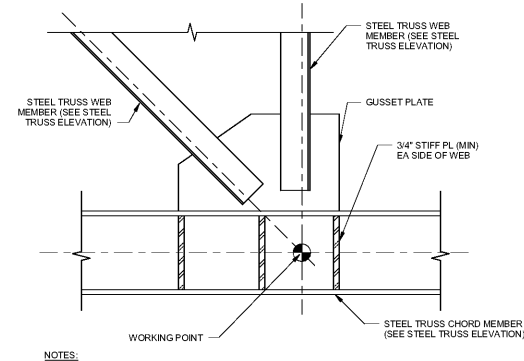
STEEL TRUSS END REACTIONS

SCALE: 1" = 1'-0"



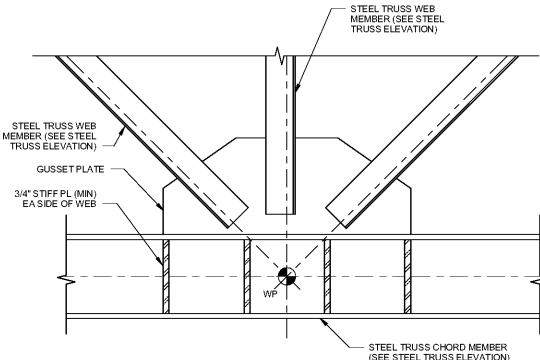
STEEL TRUSS CONNECTION

SCALE: 1" = 1'-0"



STEEL TRUSS CONNECTION

SCALE: 1" = 1'-0"



STEEL TRUSS CONNECTION

SCALE: 1" = 1'-0"

Order Plans @

WWW.LDILine.com