



CHAPMAN GRIFFIN LANIER SUSSENBACH ARCHITECTS

RELEASED FOR CONSTRUCTION

PES STRUCTURAL ENGINEERS

REGISTERED PROFESSIONAL ENGINEER



DATE NO. DESCRIPTION

11/01/18 ISSUED FOR PROPOSALS

DATE	NO.	DESCRIPTION
11/01/18	ISSUED FOR PROPOSALS	

CHAPMAN GRIFFIN LANIER SUSSENBACH ARCHITECTS

DOE FACILITY CODE: 680-3086

RIVERWOOD HIGH SCHOOL - PHASE 3 - AUDITORIUM/GYMNASIUM ADDITION

5900 RAIDER DRIVE NW SANDY SPRINGS, GA 30328

FULTON COUNTY SCHOOLS RFP NO. XXX-XX

PROJECT NO. 0217302.00

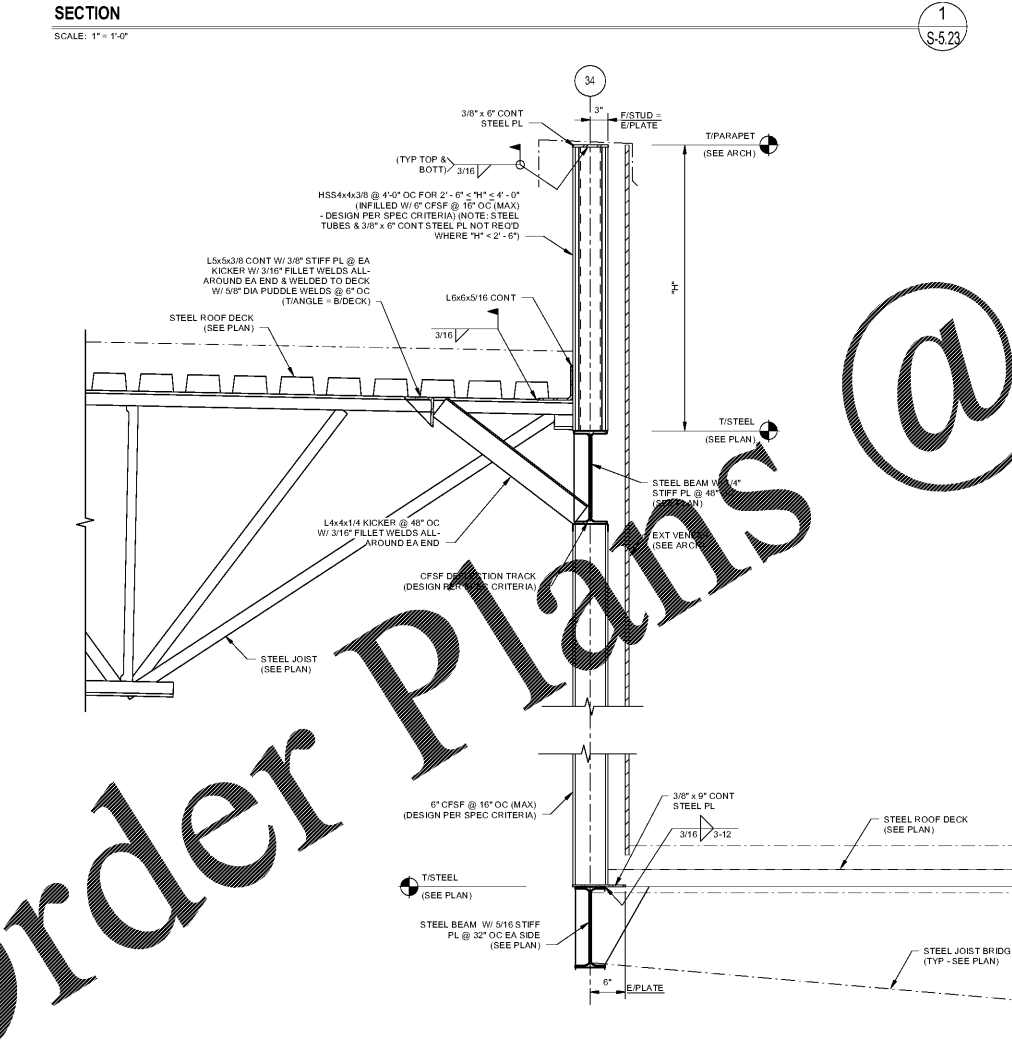
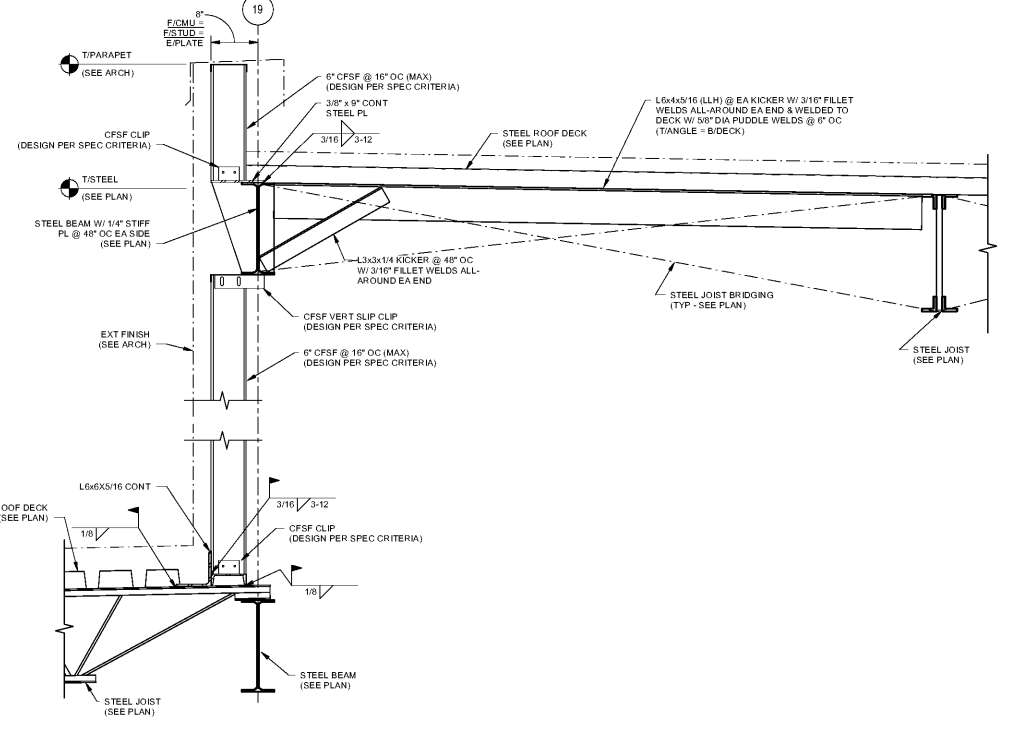
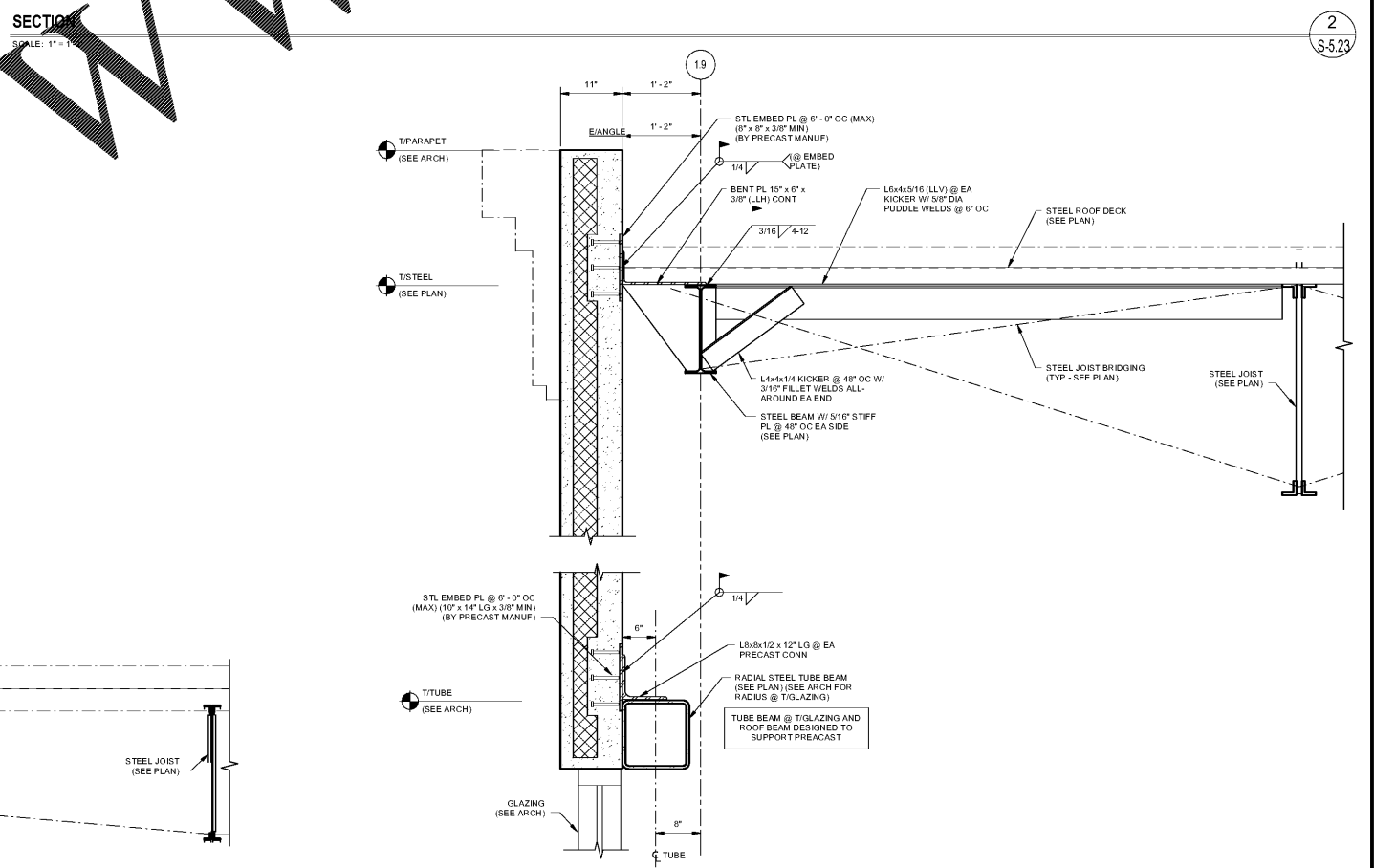
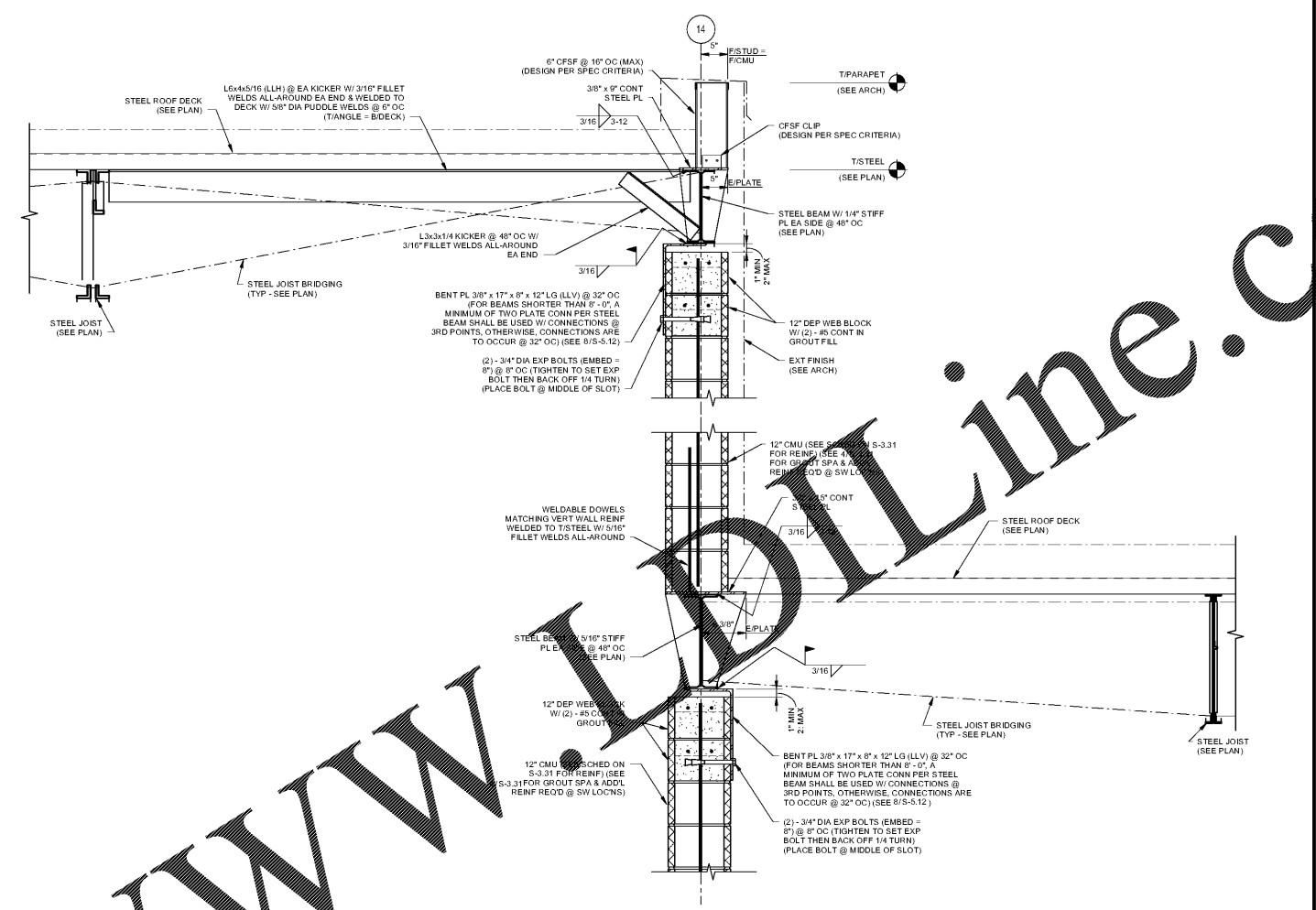
DATE 09/17/18

DESIGNED BY: Author

CHECKED BY: Checker

SCALE: 1" = 1'-0"

S-5.23



Order Plans @ www.pdfline.com

www.pdfline.com

@