

| DATE | NO. | DESCRIPTION |
|----------|-----|----------------------------|
| 06/16/18 | | FOR CONSTRUCTION DOCUMENTS |
| 09/17/18 | | FOR CHECK-SET/PERMITS |
| 10/15/18 | | FINAL ISSUE SUBMITTED |
| 11/01/18 | | ISSUED FOR PROPOSALS |

CHAPMAN GRIFFIN LANIER SUSENBACH ARCHITECTS
2500 Cumberland Pkwy., Suite 350, Atlanta, Ga 30339, Phone: 404.733.9493

DOE FACILITY CODE: 660-3086

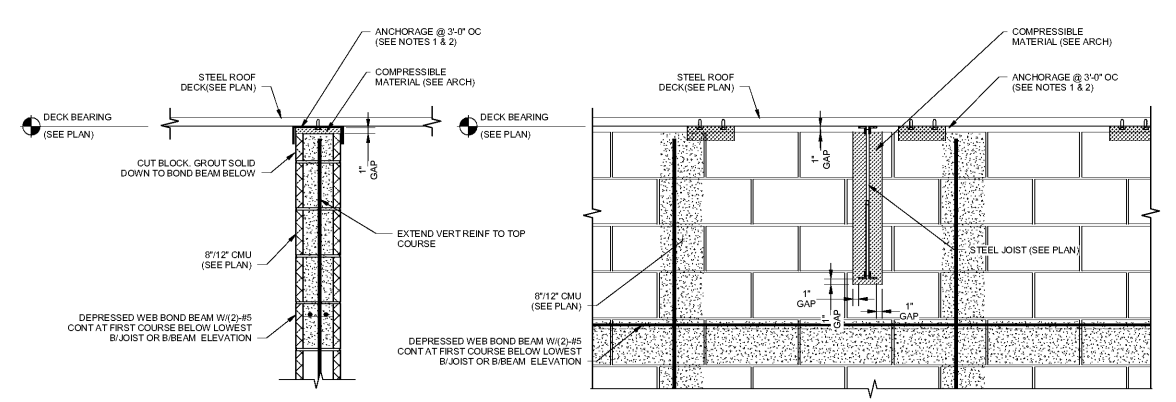
RIVERWOOD HIGH SCHOOL - PHASE 3 - AUDITORIUM/GYMNASIUM ADDITION

5900 RAIDER DRIVE NW SANDY SPRINGS, GA 30328
FULTON COUNTY SCHOOLS RFP NO. XXX-XX

ROOF FRAMING SECTIONS & DETAILS

PROJECT NO. 0217302.00
DATE: 09/17/18
DRAWN BY: RAS
CHECKED BY: ACB

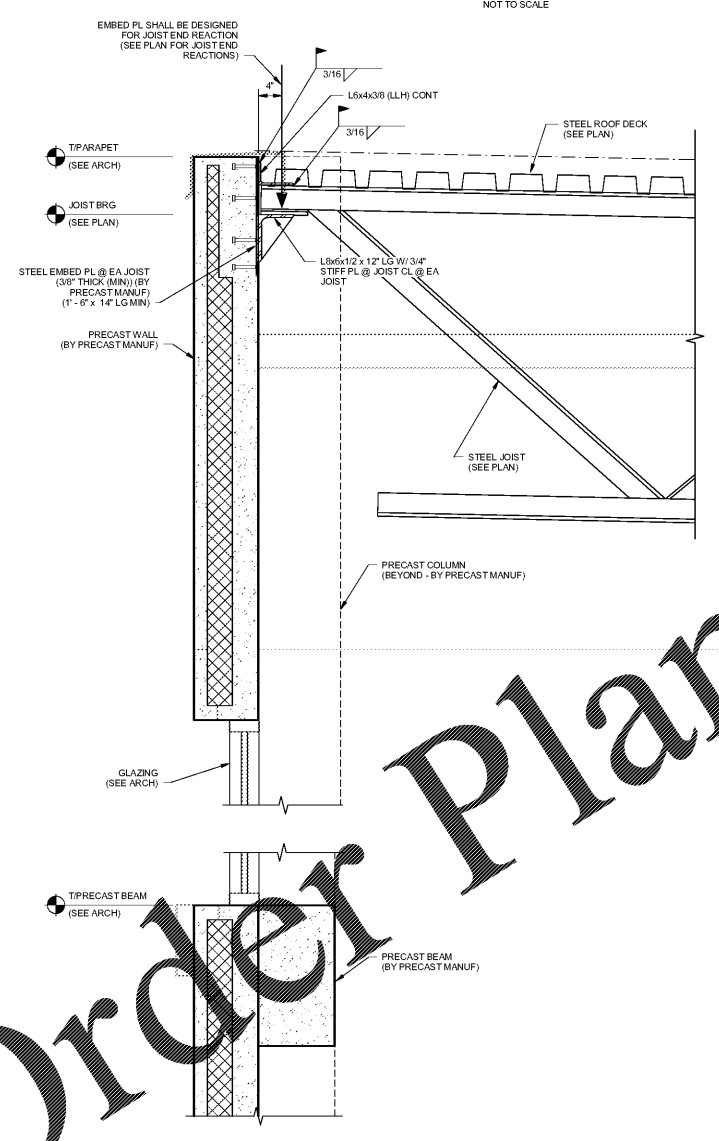
S-5.13



TYP NLB CMU WALL BRACED AT ROOF DECK

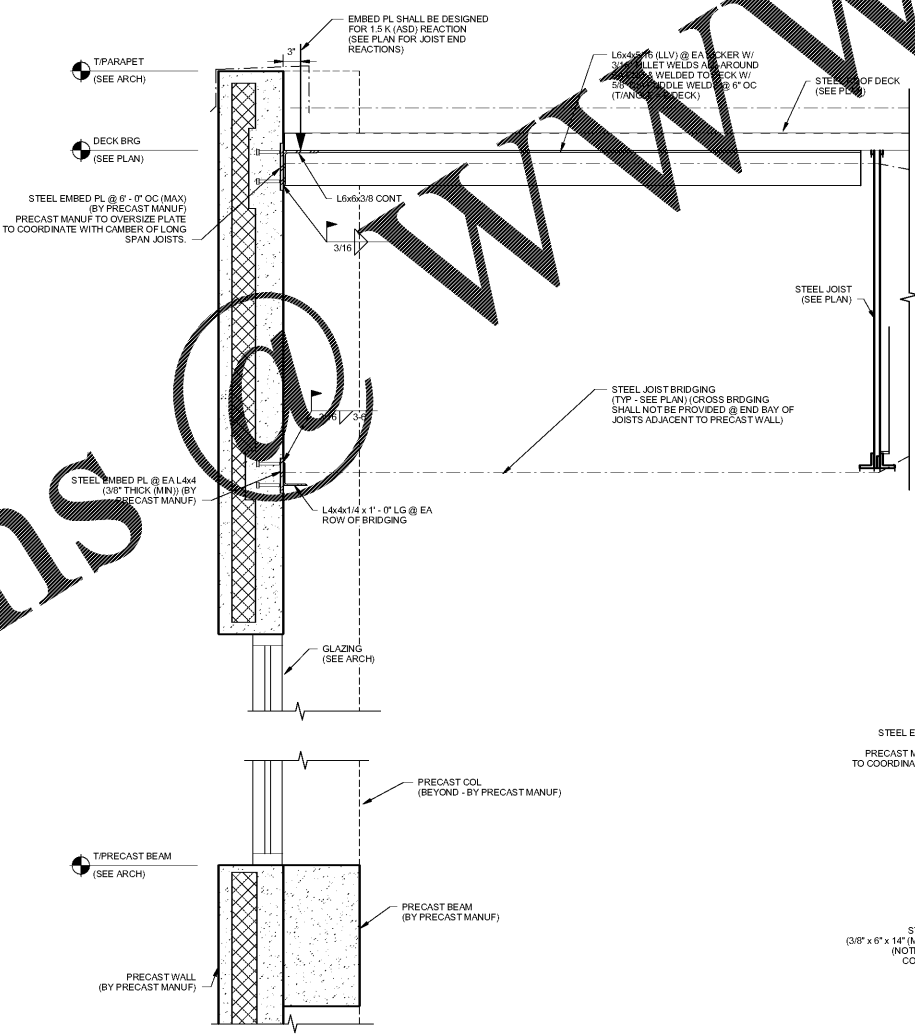
- PTA SERIES ANCHOR - PTA 422 BY HB, INC FASTEN FROM UNDERSIDE TO DECK USING (2-#10) SCREWS. PTA ANCHOR TO BE CORRECT SIZE FOR BLOCK DIMENSION.
- PTA ANCHOR MAY BE REPLACED BY A 1/2 GAUGE BENT METAL OF A WIDTH EQUAL TO THE NOMINAL MASONRY SIZE AND 2 1/2" VERTICAL LEGS.

TYPICAL NLB CMU WALL TOP OF WALL BRACING
NOT TO SCALE

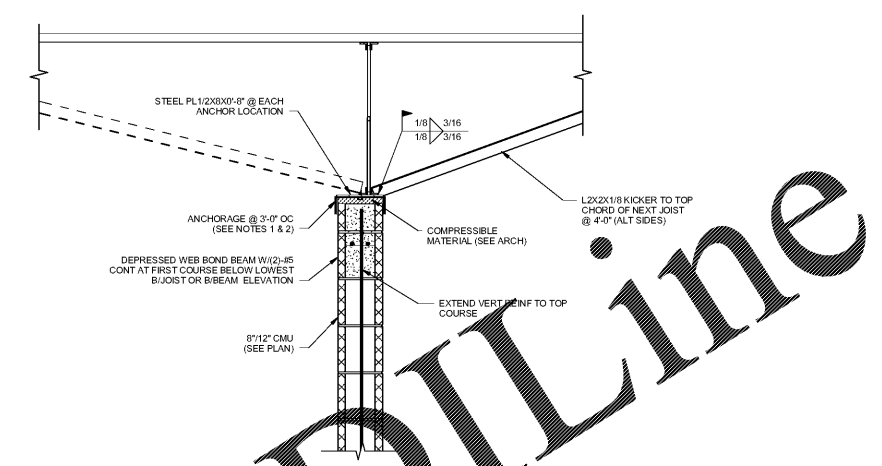


SECTION
SCALE: 1" = 1'-0"

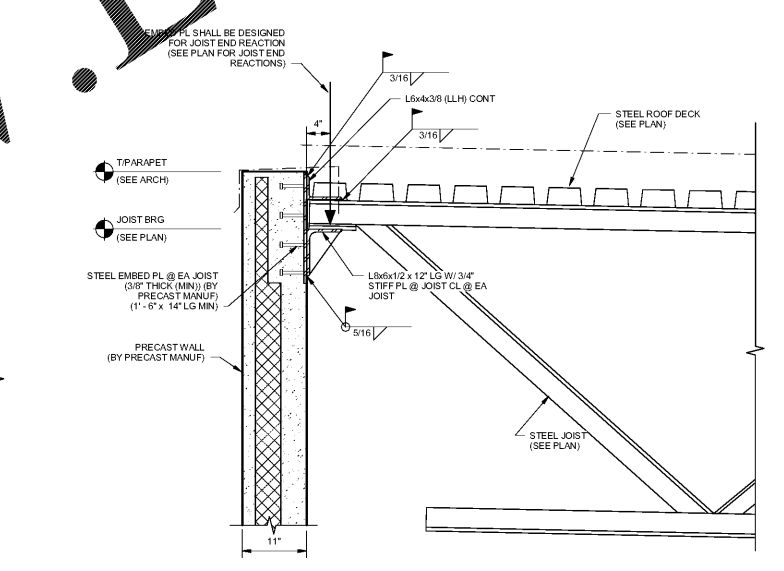
TYP NLB CMU WALL BRACED AT ROOF DECK PERPENDICULAR TO STEEL JOIST



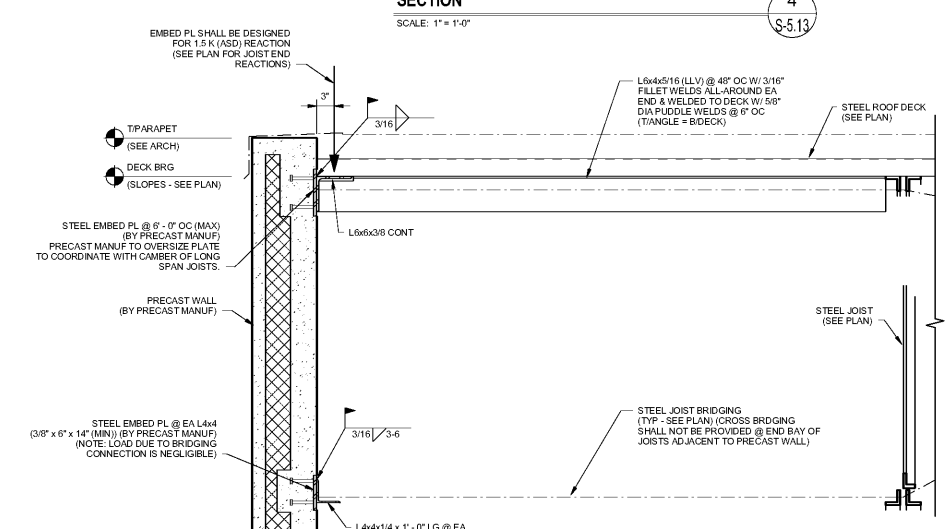
SECTION
SCALE: 1" = 1'-0"



TYP NLB CMU WALL BRACED PARALLEL TO STEEL JOIST



SECTION
SCALE: 1" = 1'-0"



SECTION
SCALE: 1" = 1'-0"

Order Plans @ www.LDOnline.com

10/17/18 13:44