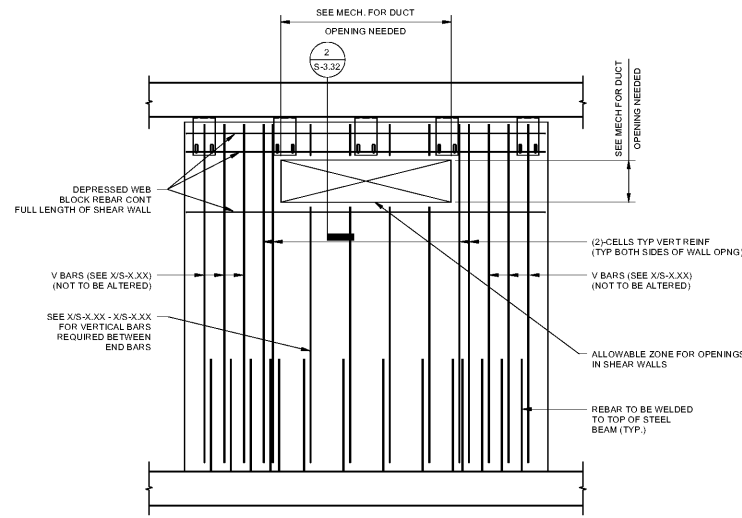


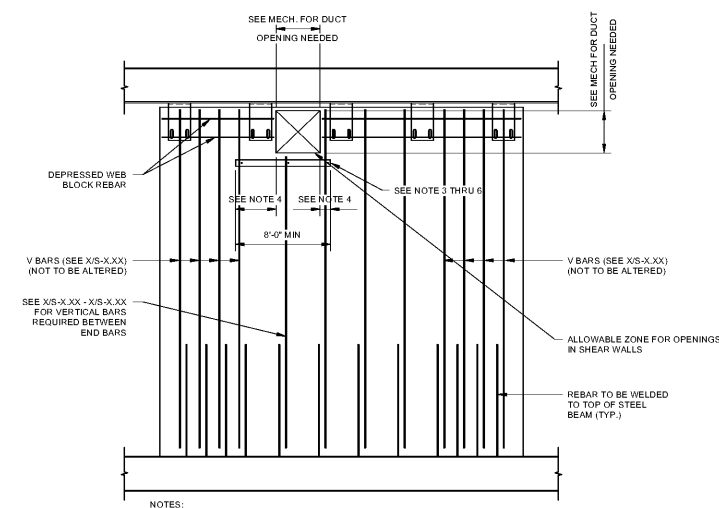
Order Plans @



NOTES:
 1. DUCT OPENING LOCATION SHALL BE COORDINATED BY THE G.C. SO THAT THE OPENING IS BETWEEN THE END BARS AND THAT THE END BARS ARE NOT CUT.
 2. ALL PIPING PENETRATING SHEAR WALLS SHALL BE SLEEVED WITH A STEEL PIPE PRIOR TO THE WALL BEING GROUDED IF THE PIPING NEEDS TO PENETRATE THE SHEAR WALL OTHER THAN THE ALLOWABLE BOXED OUT OPENING SHOWN ABOVE.

TYPICAL ALLOWABLE SHEAR WALL PENETRATIONS
 SCALE: 3/8" = 1'-0"

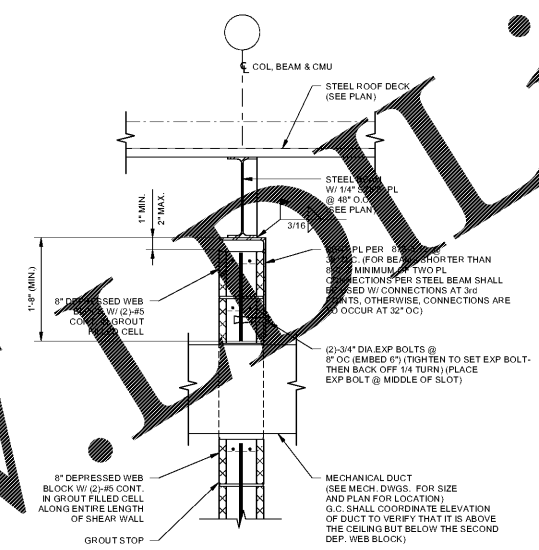
1A
 S-3.32



NOTES:
 1. DUCT OPENING LOCATION SHALL BE COORDINATED BY THE G.C. SO THAT THE OPENING IS BETWEEN THE END BARS AND THAT THE END BARS ARE NOT CUT.
 2. ALL PIPING PENETRATING SHEAR WALLS SHALL BE SLEEVED WITH A STEEL PIPE PRIOR TO THE WALL BEING GROUDED IF THE PIPING NEEDS TO PENETRATE THE SHEAR WALL OTHER THAN THE ALLOWABLE BOXED OUT OPENING SHOWN ABOVE.
 3. L3X3X3/8 X 8'-0" LG (MIN) (LEG FACING OUT FROM WALL) W/ 3/4" DIA EPOXY ANCHORS DRILLED & EPOXIED @ EA GROUDED VERT REINFORCED CELL USING HLT HIT-HY70 EPOXY ADHESIVE (EMBED = 3.34") (TYP). ANGLE SHALL BE BOLTED TO FIRST GROUDED VERT REINFORCED CELL ON BOTH SIDES OF MEP PENETRATION THAT IS CONTINUOUS, UNINTERRUPTED, TO TOP OF WALL BOND BEAMS.
 4. WHERE MULTIPLE MEP PENETRATIONS THROUGH (2) TOP OF WALL BOND BEAMS SPACED CLOSER THAN 8'-0" OC, ANGLE SHALL EXTEND 4'-0" MIN PAST EDGE OF EACH PENETRATION W/ 3/4" DIA EPOXY ANCHORS DRILLED & EPOXIED @ EA GROUDED VERT REINFORCED CELL USING HLT HIT-HY70 EPOXY ADHESIVE (EMBED = 3.34") (TYP).
 5. ANGLE IS REQUIRED BELOW EA MEP PENETRATION IF VERT REBAR CUT BY WALL PENETRATION OR # (2) WALL BOND BEAMS HORIZ REINF IS CUT.
 6. DIMENSIONS SHOWN ARE FROM E/ANGLE TO EPENETRATION OR E/ANGLE (TYP).

TYPICAL ALLOWABLE SHEAR WALL PENETRATIONS WHEN PENETRATIONS ARE IN TOP TWO CMU COURSES OF WALL
 SCALE: 3/8" = 1'-0"

2
 S-3.32



DETAIL
 SCALE: 1" = 1'-0"

2
 S-3.32

Architecture Planning Facilitation Design

CGLS ARCHITECTS
 CHAPMAN GRIFFIN LANIER SUSENBACH ARCHITECTS
 2500 Cumberland Pkwy., Suite 350, Atlanta, Ga 30339, Phone: 404.733.5493

RELEASED FOR CONSTRUCTION

PES STRUCTURAL ENGINEERS
 11/01/2018

DATE	NO.	DESCRIPTION
06/19/18		SIZE CONSTRUCTION DOCUMENTS
09/17/18		DOE CHECK-SEI/PERM SET
10/19/18		FINAL CODE SUBMITTAL ISSUED FOR PROPOSALS

CHAPMAN GRIFFIN LANIER SUSENBACH ARCHITECTS
 5900 RAIDER DRIVE NW SANDY SPRINGS, GA 30328
 FULTON COUNTY SCHOOLS RFP NO. XXX-XX

RIVERWOOD HIGH SCHOOL - PHASE 3 - AUDITORIUM/GYMNASIUM ADDITION

PROJECT NO. 0217302.00
 DATE: 09/17/18
 DRAWN BY: RAS
 CHECKED BY: ACS

S-3.32