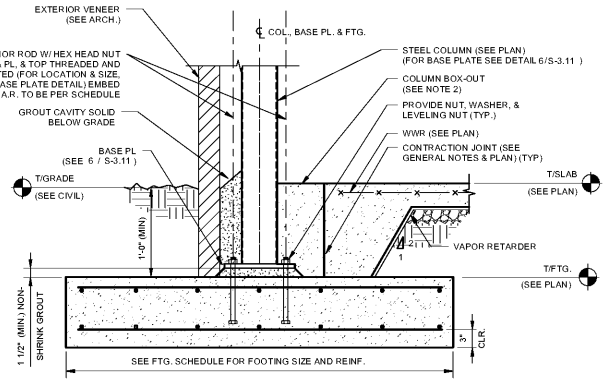


NOTE: SEE S-3.11 FOR TYPICAL CONC. PIER @ COL. BASE WHERE T/FTG. ELEV. IS BELOW (-2'-9" @ INT COLS)

- NOTES:
1. PROVIDE 3" CONC COVER (MIN) FOR COL. BASE PL & ANCHOR RODS BELOW GRADE (TYP)
  2. COLUMN BOX-OUT SHALL BE 1.5 x MAXIMUM BASEPLATE DIMENSION BUT NOT LESS THAN 2'-0" x 2'-0". GC SHALL INCREASE BOX-OUT AS REQUIRED TO ALLOW FOR GROUTING UNDER BASE PLATE AND WELDING OF WASHERS TO BASE PLATE AT DEEPER FOOTINGS.

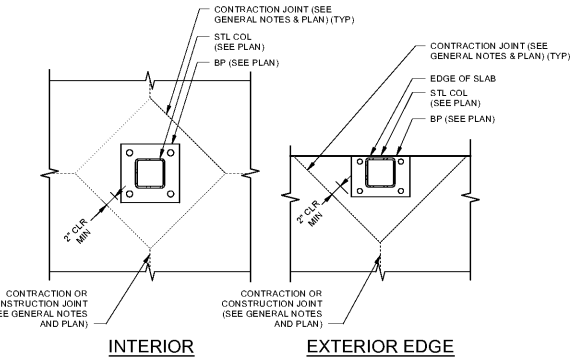
**TYPICAL INTERIOR COLUMN FOOTING**  
SCALE: 1" = 1'-0"



NOTE: SEE S-3.11 FOR TYPICAL CONC. PIER @ COL. BASE WHERE T/FTG. ELEV. IS BELOW (-3'-4" @ EXT COLS)

- NOTES:
1. PROVIDE 3" CONC COVER (MIN) FOR COL. BASE PL & ANCHOR RODS BELOW GRADE (TYP)
  2. COLUMN BOX-OUT SHALL BE 1.5 x MAXIMUM BASEPLATE DIMENSION BUT NOT LESS THAN 2'-0" x 2'-0". GC SHALL INCREASE BOX-OUT AS REQUIRED TO ALLOW FOR GROUTING UNDER BASE PLATE AND WELDING OF WASHERS TO BASE PLATE AT DEEPER FOOTINGS.

**TYPICAL EXTERIOR COLUMN FOOTING**  
SCALE: 1" = 1'-0"

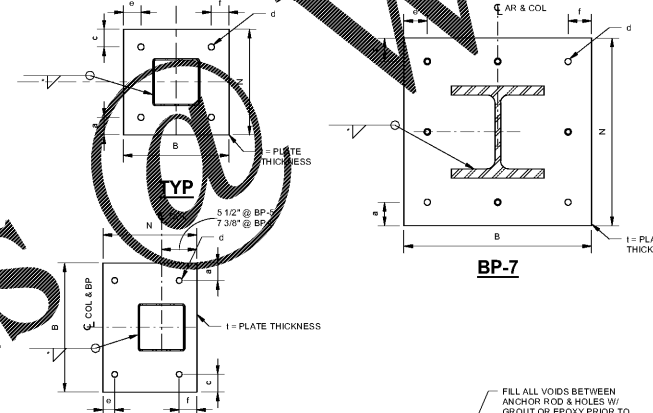


- NOTES:
1. COLUMN BOX OUT SHALL BE NOT LESS THAN 2'-0" x 2'-0". GC SHALL INCREASE BOX OUT AS REQUIRED TO ALLOW FOR GROUTING UNDER BASE PLATE. WELDING OF WASHERS TO BASE PLATE AT DEEPER FOOTINGS AND ATTACHING OF DIAGONAL BRACING MEMBER.

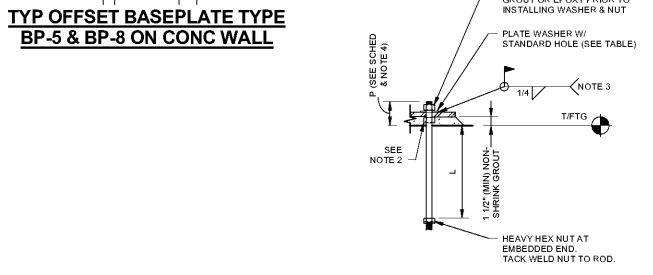
**TYPICAL ISOLATION JOINT @ COLUMN**  
SCALE: 1" = 1'-0"

**BASE PLATE SCHEDULE**

| TYPE MARK | N     | B     | a      | c      | e      | f      | PLATE HOLE DIA (Ø) | Ø      | P     | Number of Bolts |
|-----------|-------|-------|--------|--------|--------|--------|--------------------|--------|-------|-----------------|
| BP-1      | 1'-4" | 1'-4" | 2"     | 2"     | 2"     | 2"     | 1 13/16"           | 1 1/2" | 7"    | 4               |
| BP-2      | 1'-6" | 1'-6" | 2 1/2" | 2 1/2" | 2 1/2" | 2 1/2" | 2 1/4"             | 1 1/2" | 7"    | 4               |
| BP-3      | 2'-0" | 2'-0" | 3 1/4" | 3 1/4" | 3 1/4" | 3 1/4" | 2 3/4"             | 1 1/2" | 7"    | 4               |
| BP-4      | 1'-8" | 1'-8" | 3"     | 3"     | 3"     | 3"     | 2 3/4"             | 1 3/4" | 7"    | 4               |
| BP-5      | 1'-6" | 1'-6" | 3"     | 3"     | 3"     | 5 1/2" | 2 3/4"             | 2"     | 1'-6" | 4               |
| BP-6      | 1'-6" | 1'-6" | 3"     | 3"     | 3"     | 3 1/2" | 2 1/8"             | 1 1/2" | 7"    | 4               |
| BP-7      | 2'-4" | 2'-4" | 3 1/2" | 3 1/2" | 3 1/2" | 3 1/2" | 2 13/16"           | 2 3/4" | 1'-9" | 8               |
| BP-8      | 1'-4" | 1'-8" | 3"     | 3"     | 3"     | 3"     | 1 13/16"           | 1 1/2" | 1'-6" | 4               |



**TYPICAL CONCRETE PEDESTAL**  
SCALE: 1" = 1'-0"



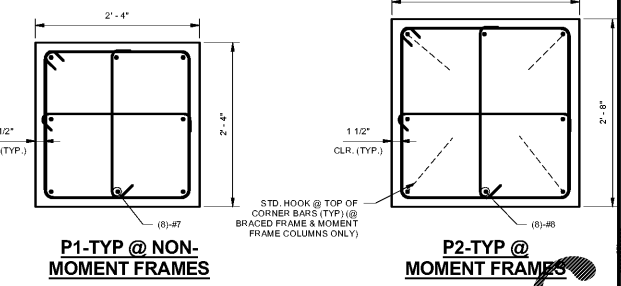
- NOTES:
1. WELD SIZE SHALL BE: 3/16" FOR COLUMN WALL OR WEB THICKNESS < 1/2"
  - 1/4" FOR COLUMN WALL OR WEB THICKNESS BETWEEN 1/2" & 3/4"
  - 5/16" FOR COLUMN WALL OR WEB THICKNESS > 3/4"
  2. PROVIDE LEVELING NUTS AND WASHERS, SHIM STACKS, OR LEVELING PLATE TO TEMPORARILY SUPPORT COLUMN DURING LEVELING AND GROUTING.
  3. WELD REQUIRED ONLY AT BRACED FRAME & MOMENT FRAME COLUMNS.
  4. PROVIDE ADEQUATE PROJECTION FOR INSTALLATION OF NUT ABOVE BASE PL. 6" MIN

**BASEPLATE SCHEDULE**  
SCALE: 1" = 1'-0"

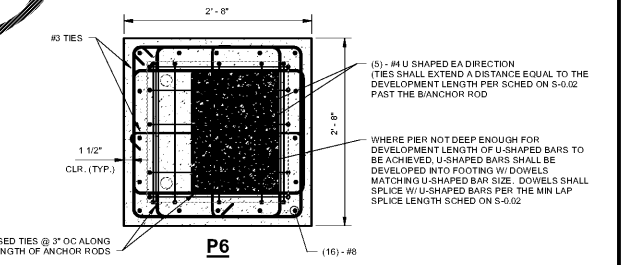
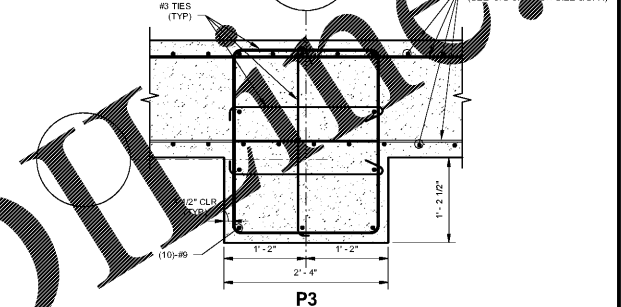
**MINIMUM PLATE WASHER DIMENSIONS**

| AR DIA | MIN WASHER DIMENSION | MIN WASHER THICKNESS |
|--------|----------------------|----------------------|
| 3/4"   | 2"                   | 1/4"                 |
| 7/8"   | 2 1/2"               | 5/16"                |
| 1"     | 3"                   | 3/8"                 |
| 1 1/4" | 3"                   | 1/2"                 |
| 1 1/2" | 3 1/2"               | 1/2"                 |
| 1 3/4" | 4"                   | 5/8"                 |
| 2"     | 5"                   | 3/4"                 |
| 2 1/2" | 5 1/2"               | 7/8"                 |

**MINIMUM PLATE WASHER DIMENSIONS**  
SCALE: 1" = 1'-0"

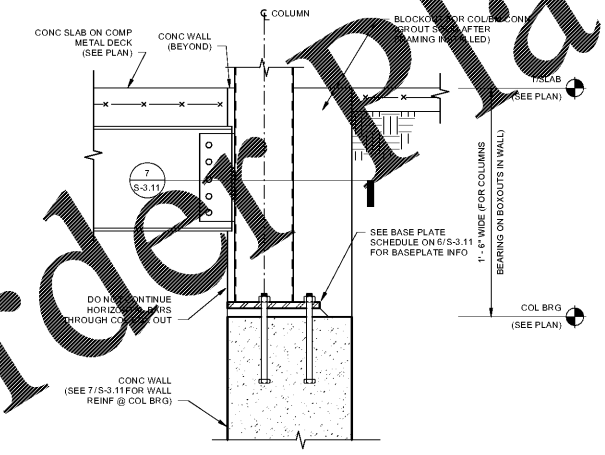


**P1-TYP @ NON-MOMENT FRAMES**  
**P2-TYP @ MOMENT FRAMES**



**TYP WALL REIN @ COL BRG @ CORNER OF WALL**  
**TYP WALL REIN @ COL BRG**

**TYP WALL REIN @ COL BRG @ CORNER OF WALL**  
SCALE: 1" = 1'-0"



**TYPICAL COLUMN BEARING @ CONCRETE WALL**  
SCALE: 1" = 1'-0"

**CHAPMAN GRIFFIN LANIER SUSENBACH ARCHITECTS**  
2500 Cumberland Pkwy., Suite 350, Atlanta, Ga 30339. Phone: 404.733.5493

**DOE FACILITY CODE: 680-3086**  
**RIVERWOOD HIGH SCHOOL - PHASE 3 - AUDITORIUM/GYMNASIUM ADDITION**  
5900 RAIDER DRIVE NW SANDY SPRINGS, GA 30328  
FULTON COUNTY SCHOOLS RFP NO. XXX-XX

**CGLS ARCHITECTS**  
CHAPMAN GRIFFIN LANIER SUSENBACH ARCHITECTS  
2017  
RELEASED FOR CONSTRUCTION

**PES STRUCTURAL ENGINEERS**  
REGISTERED PROFESSIONAL ENGINEER  
11/01/2018

| DATE     | NO. | DESCRIPTION                               |
|----------|-----|---|
| 06/18/18 |     | SIZE CONSTRUCTION DOCUMENTS               |
| 09/17/18 |     | DOE CHECK-SEAL PERMIT SET                 |
| 10/18/18 |     | FINAL CONC SUBMITTAL ISSUED FOR PROPOSALS |
| 11/01/18 |     |   |

**STEEL COL BRG SECTIONS & DETAILS**

PROJECT NO. 0217302.00  
DATE: 09/17/18  
DRAWN BY: RAS  
CHECKED BY: ACS

**S-3.11**