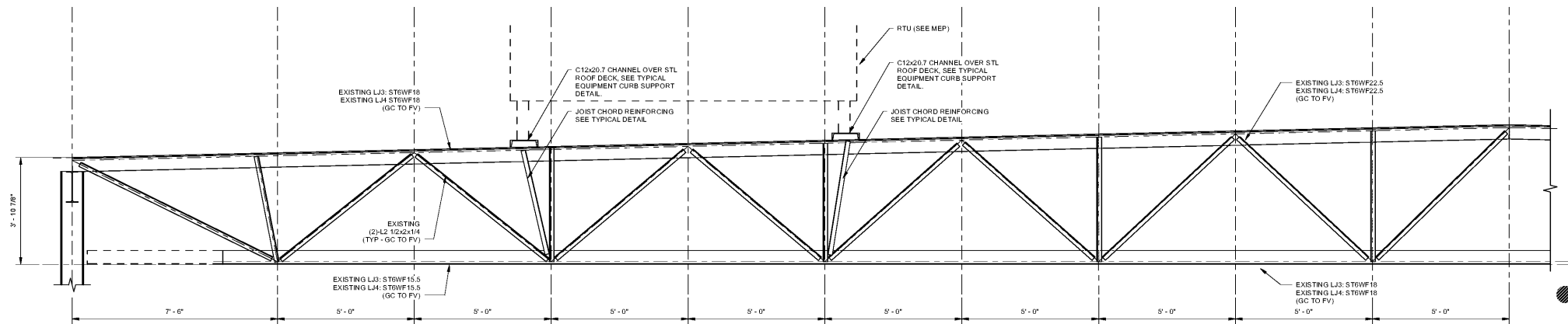


G
F
E
D
C
B
A



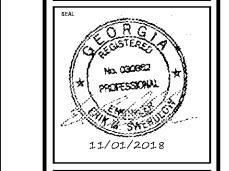
EXISTING TRUSS ELEVATION
SCALE: 1/2" = 1'-0"

1
S-2.52

Order Plans @ www.LDILine.com



CHAPMAN GRIFFIN LANIER SUSENBACH ARCHITECTS, INC.
2017
RELEASED FOR CONSTRUCTION



DATE	NO.	DESCRIPTION
10/10/18 11/01/18		FINAL GORE SUBMITTAL ISSUED FOR PROPOSALS

CHAPMAN GRIFFIN LANIER SUSENBACH ARCHITECTS
DOE FACILITY CODE: 680-3066
RIVERWOOD HIGH SCHOOL - PHASE 3 - AUDITORIUM/GYMNASIUM ADDITION
5900 RAIDER DRIVE NW SANDY SPRINGS, GA 30328
FULTON COUNTY SCHOOLS RFP NO. XXX-XX

SHEET TITLE EXISTING TRUSS ELEVATIONS	
PROJECT NO.	0217302.00
DATE	09/17/18
DRAWN BY	Author
CHECKED BY	Checker
SHEET NO. S-2.52	