

DATE	NO.	DESCRIPTION	SIZE
06/16/18	1	CONSTRUCTION DOCUMENTS	11/17/18
09/17/18	2	DOE CHECK-REV/PERM SET	10/16/18
10/16/18	3	FINAL CONSTRUCTION PERMITS	11/01/18

CHAPMAN GRIFFIN LANIER SUSENBACH ARCHITECTS
 2500 Cumberland Pkwy., Suite 350, Atlanta, Ga 30339, Phone: 404.733.5493
DOE FACILITY CODE: 680-3086
RIVERWOOD HIGH SCHOOL - PHASE 3 - AUDITORIUM/GYMNASIUM ADDITION
 5900 RAIDER DRIVE NW SANDY SPRINGS, GA 30328
 FULTON COUNTY SCHOOLS RFP NO. XXX-XX

LEVEL 000 FOUNDATION PLAN - PART 2
 PROJECT NO. 0217302.00
 DATE: 09/17/18
 DRAWN BY: RAS
 CHECKED BY: ACS
S-2.12

LEVEL 000 FOUNDATION PLAN - PART 2
 SCALE: 1/8" = 1'-0"

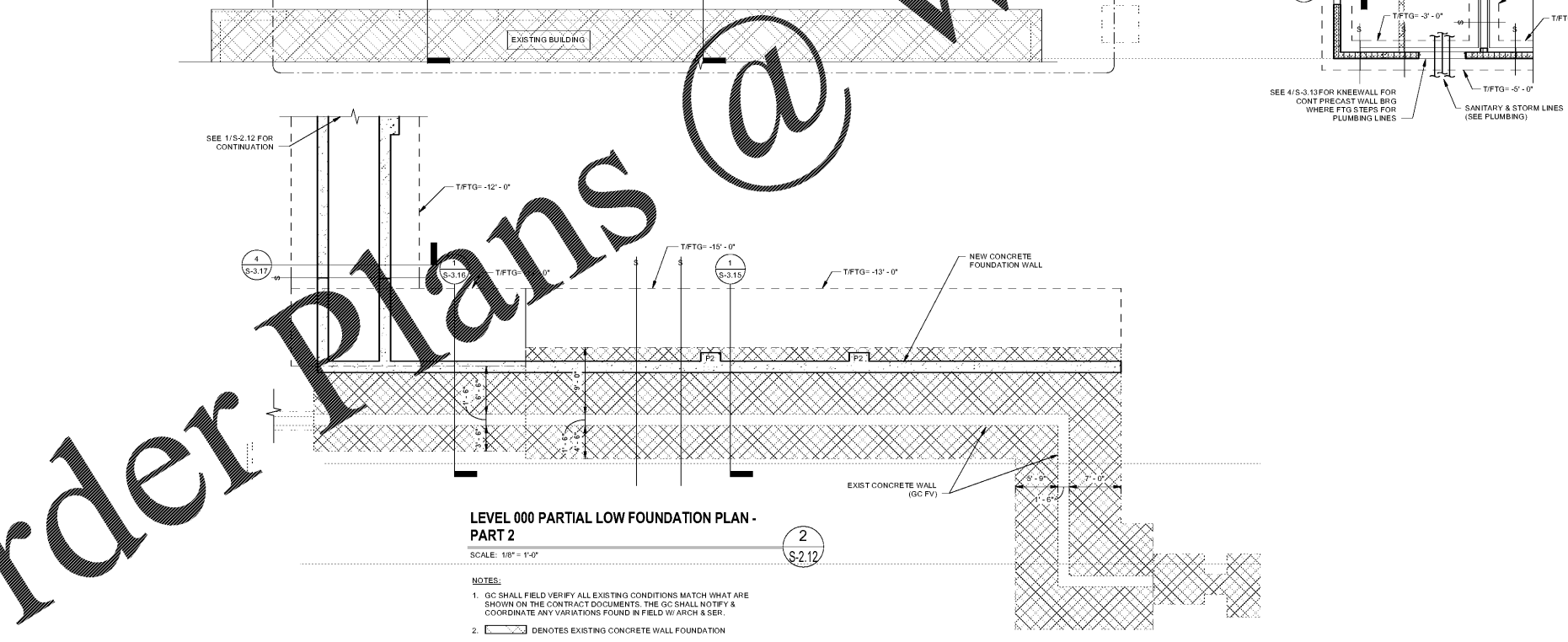
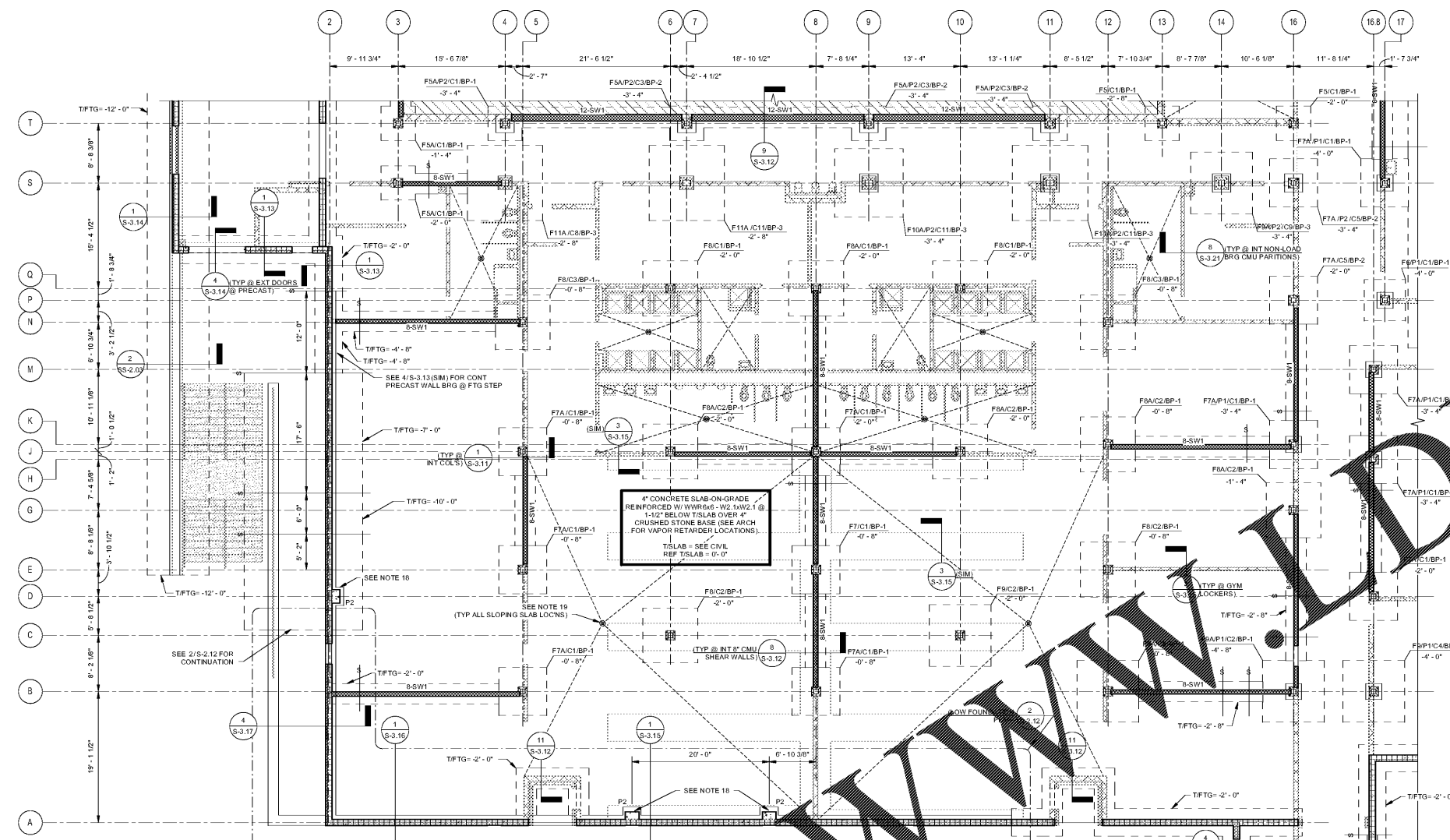
- FOUNDATION PLAN NOTES:**
- BASE PLATE MARK (SEE 6/S-3.11)
 - STEEL COLUMN MARK (SEE SCHEDULE ON THIS SHEET)
 - FOUNDATION MARK (SEE SCHEDULE ON THIS SHEET)
 - TOP OF FOOTING ELEVATION
 - PA DENOTES CONCRETE PEDESTAL MARK (SEE 3/S-3.11)
 - CI DENOTES SLAB-ON-GRADE CONTROL JOINT (SEE 2/S-3.12). GC SHALL INSTALL CONTROL JOINT FROM ALL CORNER STAIR FABRICATOR CORNERS (INCLUDING CORNERS OF WALLS DOWN TO FTG). FOLLOW GUIDELINES PROVIDED UNDER "SLAB ON GRADE" ON 5-0.01 & 13/S-3.21 FOR SPACING. WHERE CJS TERMINATE @ INTERSECTION OF PERPENDICULAR CJ @ INT OF SLAB, INSTALL REINFORCING PER...
 - SEE DETAILS 2/S-3.12 AND 12/FRI STANDARD DETAILS OF TRENCHES ADJACENT TO FOOTINGS AND PIPING ASSIGNED TO WALL FOOTINGS. PIPING PASSING UNDER FOOTING MUST BE PLACED AND NOTIFIED BEFORE FOOTINGS ARE PREPARED.
 - GC SHALL COORDINATE PLUMBING AND UTILITIES LOCATIONS WITH FOUNDATION AS NEEDED. ADDITIONALLY GC SHALL COORDINATE FOUNDATION ELEVATIONS WITH PLUMBING AND UTILITIES ENGINEER. FOR ANY FOUNDATION LOCATION CHANGE REQUESTS TO STRUCTURAL ENGINEER OF RECORD FOR REVIEW AND APPROVAL.
 - GC DENOTES STEP IN FOUNDATION (SEE 3/S-3.12)
 - SEE 3/S-3.12 FOR TYP CONC WALL CORNERS & INTERSECTIONS.
 - SEE 4/S-3.12 FOR TYP CONC WALL CONTROL & CONSTRUCTION JOINTS.
 - SEE 4/S-3.12 FOR REINF @ WALL OPENINGS.
 - SEE 4/S-3.21 FOR ADDITIONAL REINF REQUIRED @ SLAB CORNERS.
 - STEEL STAIRS (BY STEEL STAIR FABRICATOR/ENGINEER). CMU WALLS @ STAIRS SHALL BE GROUTED SOLID AS NEEDED FOR STEEL STAIR & CANOPY CONNECTIONS. STEEL STAIR FABRICATOR SHALL COORD W/ GC ARCH/ENR IF STEEL POSTS ARE NEEDED TO SUPPORT STAIR LANDING FOR LOCN COORDINATION.
 - SEE 10/S-3.21 FOR TYP THICKENED SLAB REQ @ STAIR SUPPORT POSTS.
 - CSW DENOTES CMU SHEAR WALL (SEE S-3.31). THE FIRST # DENOTES CMU THICKNESS.
 - CSW DENOTES DEPRESSIONED SLAB (SEE 2/S-3.21). GC TO COORDINATE EXACT LOCATIONS AND EXTENTS OF ALL SLAB DEPRESSIONS WITH ARCH DRAWINGS.
 - AT NOISE CRITICAL SPACES, CMU WALLS SHALL BE GROUTED SOLID. SEE ARCH FOR NOISE CRITICAL CMU WALL LOCATIONS AND EXTENTS.
 - PRECAST COL BY PRECAST MANUF. PRECAST COL CON TO TICONC PIER, INCLUDING ELEMENTS EMBEDDED INTO TYP BY PRECAST COLUMN MANUF.)
 - GC SHALL COORDINATE SLOPING OF SLAB ON GRADE WITH ARCH DRAWINGS. SLOPING SLAB ON GRADE SHALL MAINTAIN 4" SLAB THICKNESS.
 - PCW DENOTES PRECAST CONC WALL (BY PRECAST CONC WALL MANUF.)

STRUCTURAL FOUNDATION SCHEDULE

MARK	LENGTH	WIDTH	THICKNESS	BOTTOM REINFORCEMENT	TOP REINFORCEMENT
F5	9'-0"	8'-0"	1'-3"	(6) - #5 EW	...
F5A	9'-0"	8'-0"	1'-3"	(6) - #5 EW	(6) - #5 EW
F5B	9'-0"	8'-0"	3'-0"	SEE 3/S-3.14 FOR REINF	SEE 3/S-3.14 FOR REINF
F6	6'-0"	6'-0"	1'-0"	(7) - #6 EW	...
F6A	6'-0"	6'-0"	1'-0"	(7) - #6 EW	(7) - #6 EW
F7	7'-0"	7'-0"	1'-0"	(8) - #6 EW	...
F7A	7'-0"	7'-0"	1'-0"	(8) - #6 EW	(8) - #6 EW
F8	8'-0"	8'-0"	1'-0"	(9) - #6 EW	...
F8A	8'-0"	8'-0"	1'-0"	(9) - #6 EW	(9) - #6 EW
F8x3A	13'-0"	8'-0"	1'-9"	(9) - #6 LW, (14) - #6 SW	(9) - #6 LW, (14) - #6 SW
F8x15A	15'-0"	8'-0"	1'-9"	(9) - #6 LW, (16) - #6 SW	(9) - #6 LW, (16) - #6 SW
F9	9'-0"	9'-0"	1'-9"	(10) - #6 EW	...
F9A	9'-0"	9'-0"	1'-9"	(10) - #6 EW	(10) - #6 EW
F10	10'-0"	10'-0"	1'-9"	(11) - #6 EW	...
F10A	10'-0"	10'-0"	1'-9"	(11) - #6 EW	(11) - #6 EW
F11	11'-0"	11'-0"	2'-0"	(12) - #6 EW	...
F11A	11'-0"	11'-0"	2'-0"	(12) - #7 EW	(12) - #7 EW
F12	12'-0"	12'-0"	2'-0"	(12) - #6 EW	...
F13A	13'-0"	13'-0"	1'-9"	(14) - #7 EW	(14) - #7 EW
F15A	15'-0"	15'-0"	2'-0"	(16) - #7	(16) - #7
F15x10A	15'-0"	13'-0"	1'-9"	(14) - #7 LW, (16) - #7 SW	(14) - #7 LW, (16) - #7 SW

STRUCTURAL COLUMN SCHEDULE

MARK	SIZE
C1	HSS8x8x1/4
C2	HSS8x8x3/16
C3	HSS8x8x3/8
C4	HSS8x8x1/2
C5	HSS8x8x5/8
C6	HSS10x8x5/8
C7	HSS12x8x5/8
C8	HSS12x10x1/2
C9	HSS10x10x3/8
C10	HSS8x8x3/8
C11	HSS14x10x3/8
C12	W14x139



LEVEL 000 PARTIAL LOW FOUNDATION PLAN - PART 2
 SCALE: 1/8" = 1'-0"

- NOTES:**
- GC SHALL FIELD VERIFY ALL EXISTING CONDITIONS MATCH WHAT ARE SHOWN ON THE CONTRACT DOCUMENTS. THE GC SHALL NOTIFY & COORDINATE ANY VARIATIONS FOUND IN FIELD W/ ARCH & SER.
 - EXIST DENOTES EXISTING CONCRETE WALL FOUNDATION

Order Plans @