



CHAPMAN GRIFFIN LANIER SUSENBACH ARCHITECTS
2500 Cumberland Pkwy., Suite 350, Atlanta, Ga 30339. Phone: 404.733.5493

RELEASED FOR CONSTRUCTION

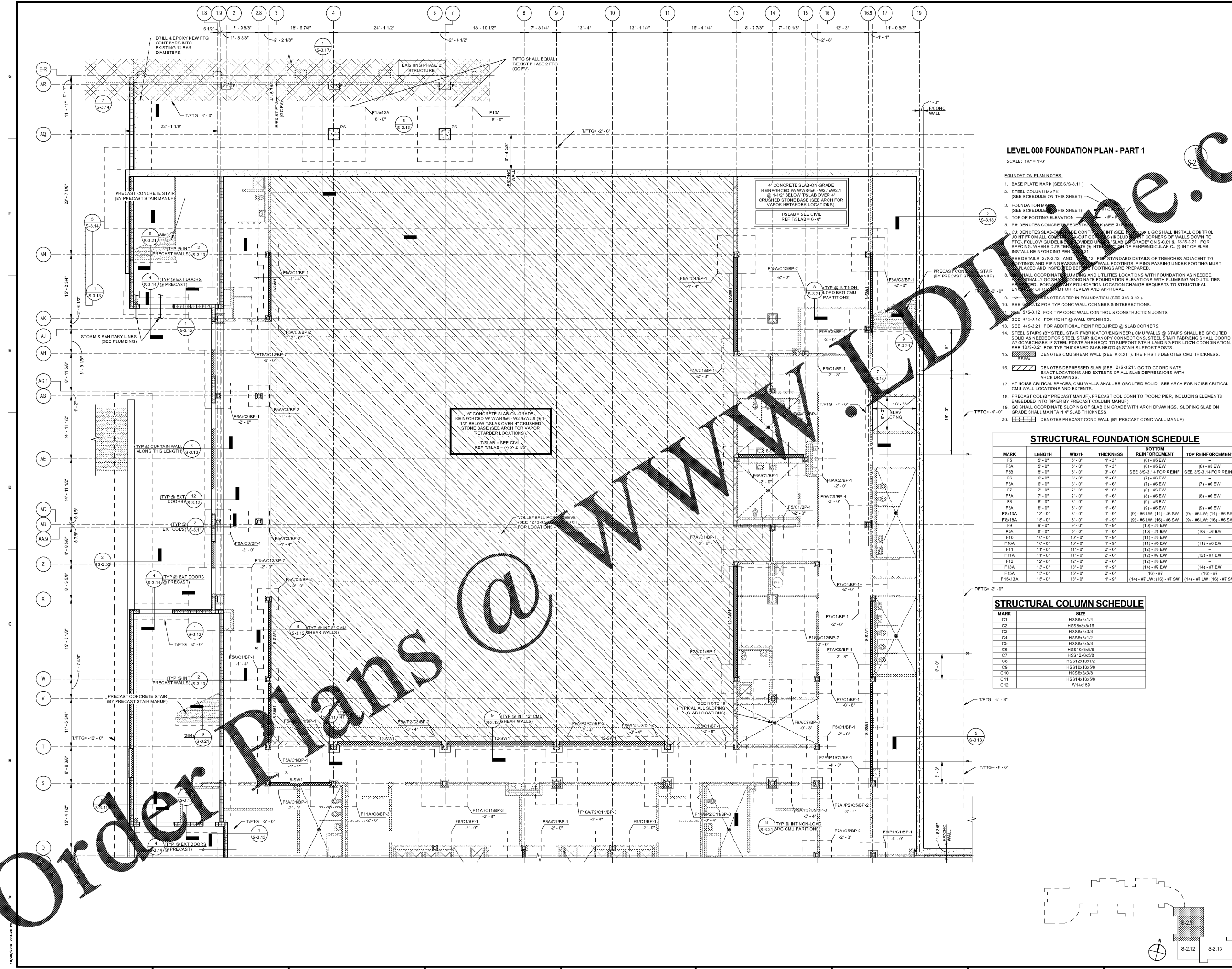


DATE	NO.	DESCRIPTION
06/16/16		SIZE CONSTRUCTION DOCUMENTS
09/17/16		DOE CHECK-REV/ PERMIT SET
10/16/16		FINAL CONSTRUCTION DOCUMENTS FOR PROPOSALS
11/01/16		

DOE FACILITY CODE: 680-3086
RIVERWOOD HIGH SCHOOL - PHASE 3 - AUDITORIUM/GYMNASIUM ADDITION
5900 RAIDER DRIVE NW SANDY SPRINGS, GA 30328
FULTON COUNTY SCHOOLS RFP NO. XXX-XX

LEVEL 000 FOUNDATION PLAN - PART 1

PROJECT NO. 0217302.00
DATE: 09/17/16
DRAWN BY: RAS
CHECKED BY: ACS
SHEET NO. S-2.11



LEVEL 000 FOUNDATION PLAN - PART 1

SCALE: 1/8" = 1'-0"

FOUNDATION PLAN NOTES:

- BASE PLATE MARK (SEE S-3.11)
- STEEL COLUMN MARK (SEE SCHEDULE ON THIS SHEET)
- FOUNDATION MARK (SEE SCHEDULE ON THIS SHEET)
- TOP OF FOOTING ELEVATION (SEE SCHEDULE ON THIS SHEET)
- PA DENOTES CONCRETE PEDESTAL (SEE S-3.11)
- CJ DENOTES SLAB-ON-GRADE CONTROL JOINT (SEE S-3.11). GC SHALL INSTALL CONTROL JOINT FROM ALL CORNER STAIR FABRICATION (CMU) WALLS DOWN TO FTG. FOLLOW GUIDELINE FOR DIVIDED SLAB ON GRADE ON S-0.01 & S-3.21 FOR SPACING. WHERE CJS TERMINATE @ INTERSECTION OF PERPENDICULAR CJ @ INT OF SLAB, INSTALL REINFORCING PER S-3.11
- SEE DETAILS 2/5-3.12 AND 2/5-3.12 FOR STANDARD DETAILS OF TRENCHES ADJACENT TO FOOTINGS AND PIPING PASSING UNDER WALL FOOTINGS. PIPING PASSING UNDER FOOTING MUST BE PROTECTED AND INSURED SET FOOTINGS ARE PREPARED.
- GC SHALL COORDINATE PLUMBING AND UTILITIES LOCATIONS WITH FOUNDATION AS NEEDED. GC SHALL COORDINATE FOUNDATION ELEVATIONS WITH PLUMBING AND UTILITIES ENGINEER OF RECORD FOR REVIEW AND APPROVAL.
- GC DENOTES STEP IN FOUNDATION (SEE S-3.12)
- SEE S-3.12 FOR TYP CONCR WALL CORNERS & INTERSECTIONS.
- SEE S-3.12 FOR TYP CONCR WALL CONTROL & CONSTRUCTION JOINTS.
- SEE S-3.12 FOR REINF @ WALL OPENINGS.
- SEE S-3.21 FOR ADDITIONAL REINF REQUIRED @ SLAB CORNERS.
- STEEL STAIRS BY STEEL STAR FABRICATION ENGINEER. CMU WALLS @ STAIRS SHALL BE GROUDED SOLID AS NEEDED FOR STEEL STAR & CANOPY CONNECTIONS. STEEL STAR FABRIG SHALL COORD W/ GC ARCHSR IF STEEL POSTS ARE NEEDED TO SUPPORT STAIR LANDINGS FOR LOCTN COORDINATION. SEE S-3.21 FOR TYP THICKENED SLAB REED @ STAIR SUPPORT POSTS.
- CMU DENOTES CMU SHEAR WALL (SEE S-3.11). THE FIRST # DENOTES CMU THICKNESS.
- CMU DENOTES DERESSED SLAB (SEE 2/5-3.21). GC TO COORDINATE EXACT LOCATIONS AND EXTENTS OF ALL SLAB DEPRESSIONS WITH ARCH DRAWINGS.
- AT NOISE CRITICAL SPACES, CMU WALLS SHALL BE GROUDED SOLID. SEE ARCH FOR NOISE CRITICAL CMU WALL LOCATIONS AND EXTENTS.
- PRECAST COL BY PRECAST MANUF. PRECAST COL CONN TO TCONC PIER, INCLUDING ELEMENTS EMBEDDED INTO TPIER BY PRECAST COLUMN MANUF)
- GC SHALL COORDINATE SLOPING OF SLAB ON GRADE WITH ARCH DRAWINGS. SLOPING SLAB ON GRADE SHALL MAINTAIN 4" SLAB THICKNESS.
- CMU DENOTES PRECAST CONCR WALL BY PRECAST CONCR WALL MANUF.

STRUCTURAL FOUNDATION SCHEDULE

MARK	LENGTH	WIDTH	THICKNESS	BOTTOM REINFORCEMENT	TOP REINFORCEMENT
F5A	5'-0"	5'-0"	1'-3"	(6) #6 EW	(6) #6 EW
F5B	5'-0"	5'-0"	3'-0"	SEE S-3.14 FOR REINF	SEE S-3.14 FOR REINF
F6	6'-0"	6'-0"	1'-6"	(7) #6 EW	(7) #6 EW
F6A	6'-0"	6'-0"	1'-6"	(7) #6 EW	(7) #6 EW
F7	7'-0"	7'-0"	1'-6"	(8) #6 EW	(8) #6 EW
F7A	7'-0"	7'-0"	1'-6"	(8) #6 EW	(8) #6 EW
F8	8'-0"	8'-0"	1'-6"	(9) #6 EW	(9) #6 EW
F8A	8'-0"	8'-0"	1'-6"	(9) #6 EW	(9) #6 EW
F8x13A	13'-0"	8'-0"	1'-6"	(9) #6 LW, (14) #6 SW	(9) #6 LW, (14) #6 SW
F9	9'-0"	9'-0"	1'-6"	(10) #6 EW	(10) #6 EW
F9A	9'-0"	9'-0"	1'-6"	(10) #6 EW	(10) #6 EW
F10	10'-0"	10'-0"	1'-6"	(11) #6 EW	(11) #6 EW
F10A	10'-0"	10'-0"	1'-6"	(11) #6 EW	(11) #6 EW
F11	11'-0"	11'-0"	2'-0"	(12) #6 EW	(12) #6 EW
F11A	11'-0"	11'-0"	2'-0"	(12) #7 EW	(12) #7 EW
F12	12'-0"	12'-0"	2'-0"	(12) #6 EW	(12) #6 EW
F13A	13'-0"	13'-0"	1'-6"	(14) #7 EW	(14) #7 EW
F13A	13'-0"	13'-0"	2'-0"	(16) #7	(16) #7
F15x13A	15'-0"	13'-0"	1'-6"	(14) #7 LW, (16) #7 SW	(14) #7 LW, (16) #7 SW

STRUCTURAL COLUMN SCHEDULE

MARK	SIZE
C1	HSS8x10x14
C2	HSS8x8x16
C3	HSS8x8x8
C4	HSS8x8x12
C5	HSS8x8x8
C6	HSS10x8x8
C7	HSS12x8x8
C8	HSS12x10x12
C9	HSS10x10x8
C10	HSS8x8x8
C11	HSS14x10x8
C12	W14x109

Order Plans @ www.lanier.com