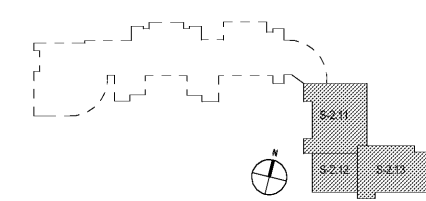


LEVEL 000 OVERALL FOUNDATION PLAN
 SCALE: 1/16" = 1'-0" 1
S-2.00



CHAPMAN GRIFFIN LANIER SUSENBACH ARCHITECTS
 2500 Cumberland Pkwy., Atlanta, Ga 30339 Phone: 404.733.5493

Architecture
Planning
Facilitation Design

CGLS ARCHITECTS
CHAPMAN GRIFFIN LANIER SUSENBACH ARCHITECTS, INC. 2017

RELEASED FOR CONSTRUCTION

PES STRUCTURAL ENGINEERS
REGISTERED PROFESSIONAL ENGINEERS

REGISTERED PROFESSIONAL ENGINEER
NO. 00088
11/01/2018

DATE	NO.	DESCRIPTION
06/18/18		SIZE CONSTRUCTION DOCUMENTS
09/17/18		CODE CHECK-REV/ PERM SET
10/18/18		FINAL CODE SUBMITTAL ISSUED FOR PROPOSALS
11/01/18		

PROJECT NO. 0217302.00
 DATE: 09/17/18
 DRAWN BY: RAS
 CHECKED BY: ACS

S-2.00

LEVEL 000
OVERALL
FOUNDATION
PLAN

RIVERWOOD HIGH SCHOOL - PHASE 3 -
AUDITORIUM/GYMNASIUM ADDITION

5900 RAIDER DRIVE NW SANDY SPRINGS, GA 30328
 FULTON COUNTY SCHOOLS RFP NO. XXX-XX

Order Plans @ www.LDILine.com