

DATE	NO.	DESCRIPTION
10/12/18		FINAL CODE SUBMITTED FOR PROPOSALS
11/01/18		

CHAPMAN GRIFFIN LANIER SUSENBACH ARCHITECTS
2500 Cumberland Pkwy., Suite 350 Atlanta, Ga 30339 Phone: 404.733.5493

DOE FACILITY CODE: 660-3086

RIVERWOOD HIGH SCHOOL - PHASE 3 - AUDITORIUM/GYMNASIUM ADDITION

5900 RAIDER DRIVE NW SANDY SPRINGS, GA 30328
FULTON COUNTY SCHOOLS RFP NO. XXX-XX

BHEET TITLE

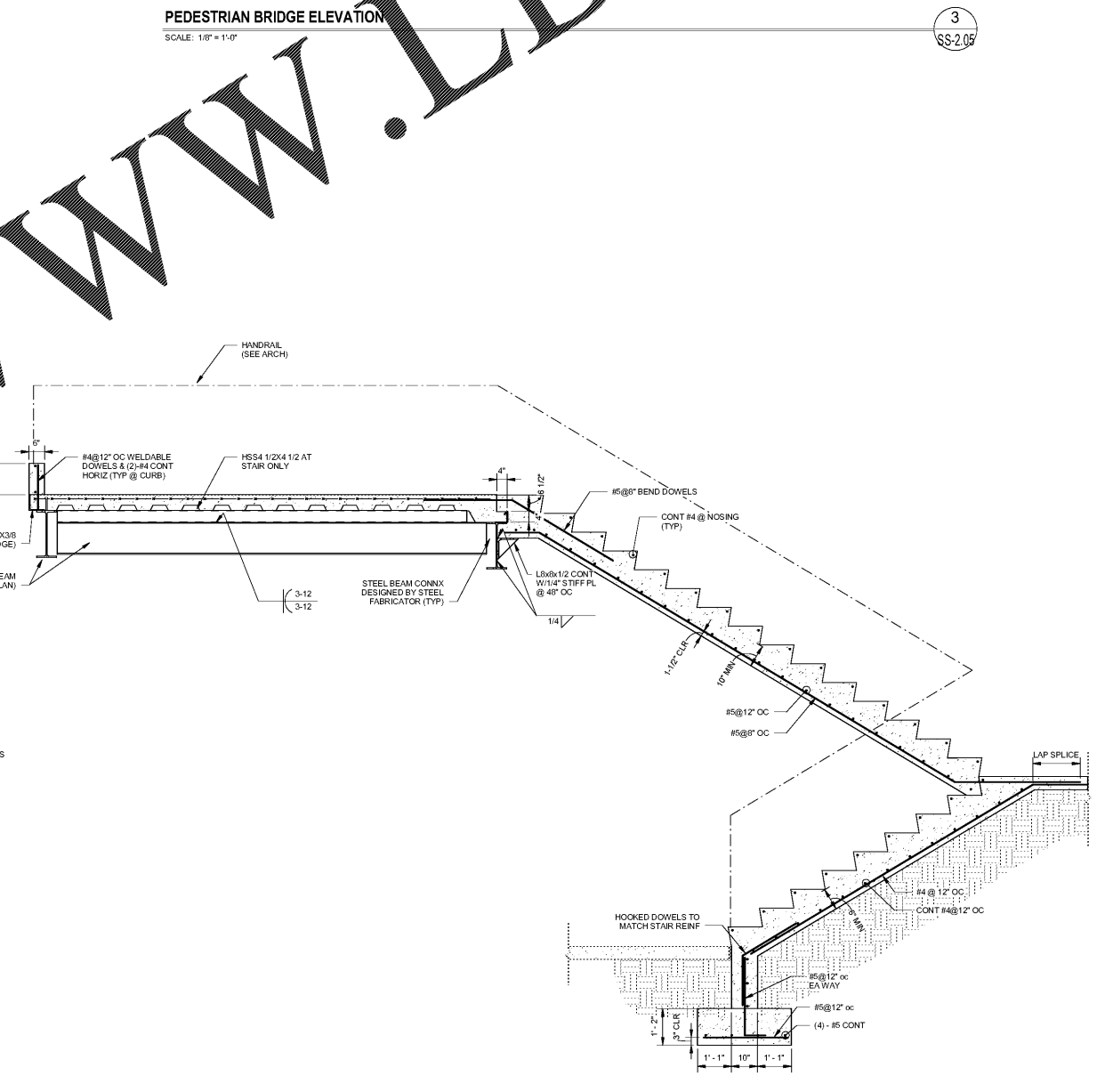
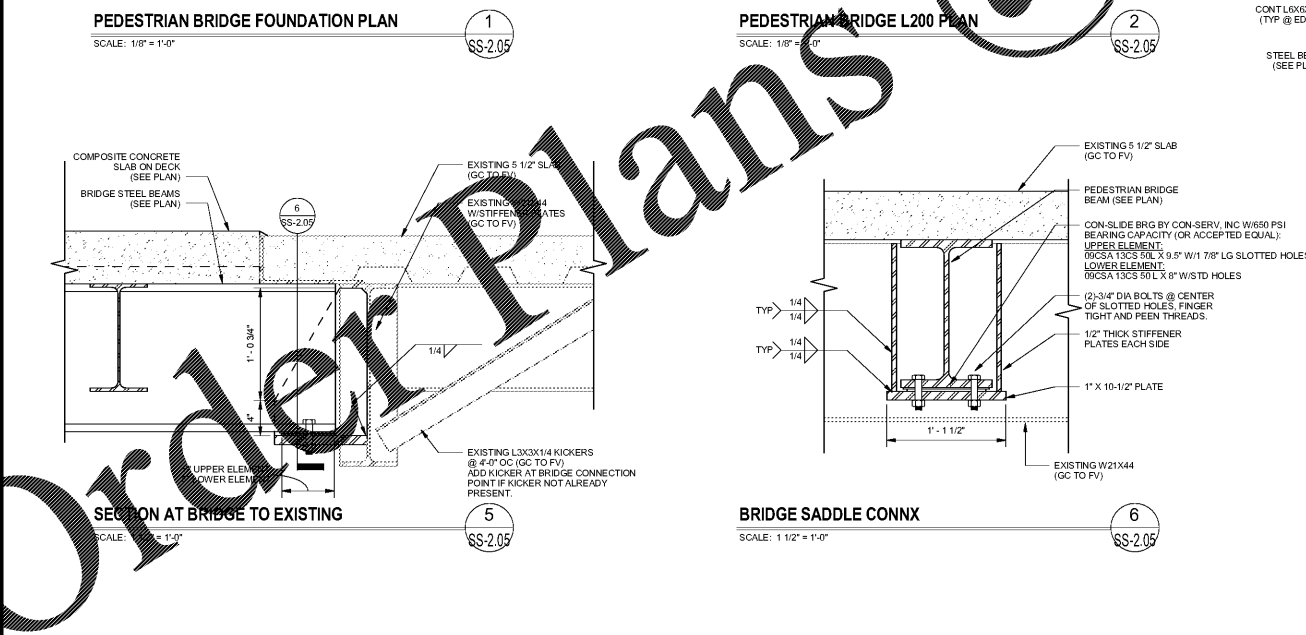
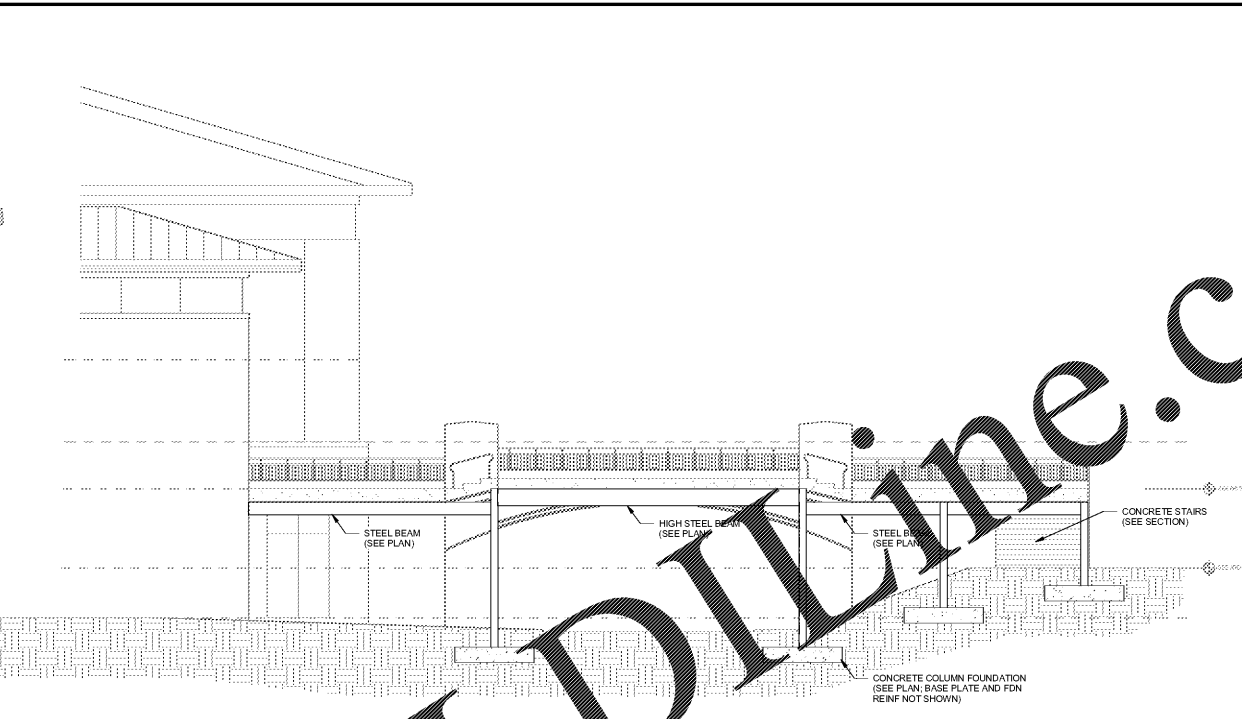
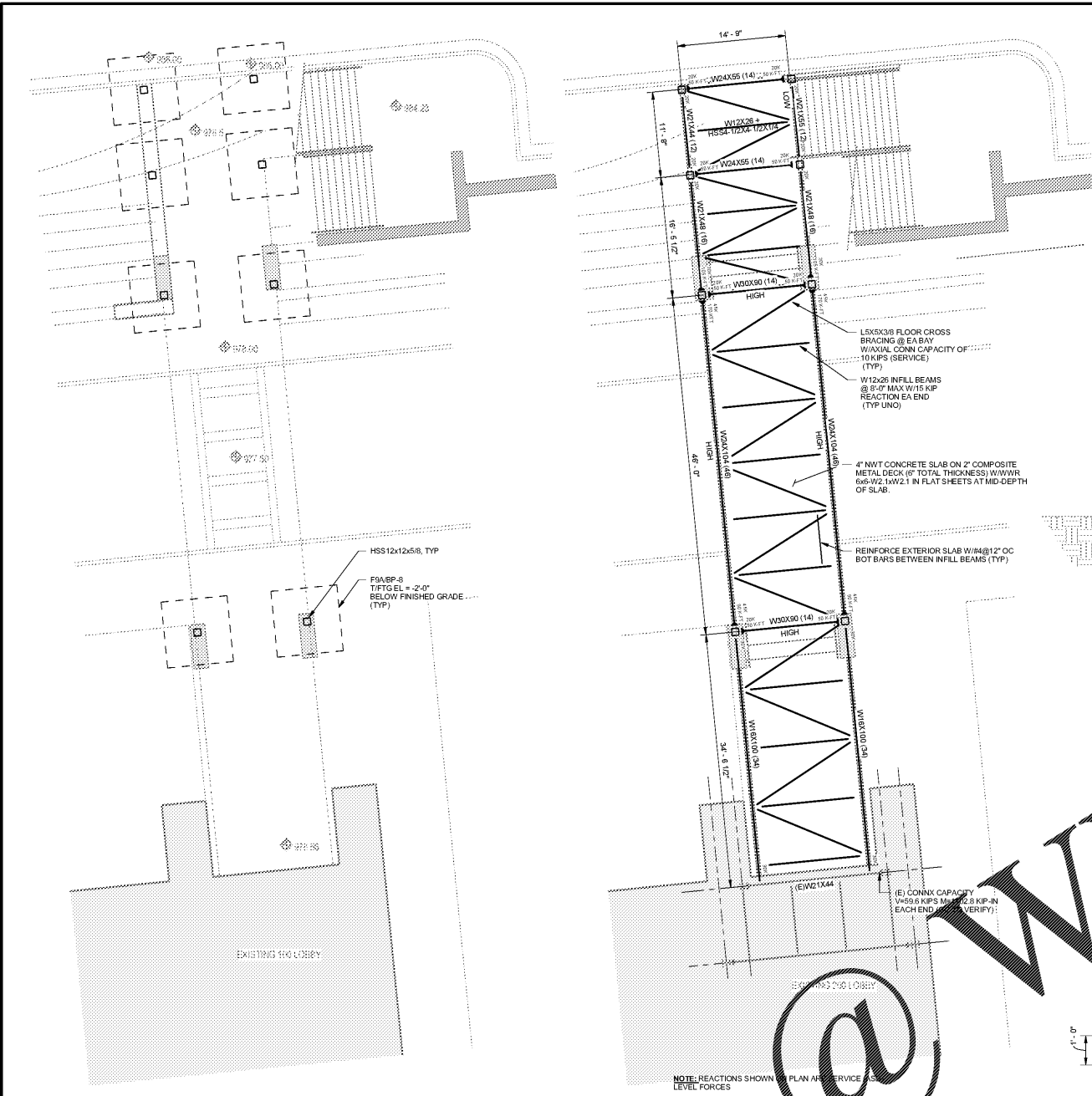
PEDESTRIAN BRIDGE PLANS AND SECTIONS

PROJECT NO. 0217302.00

DATE: 09/17/18

DESIGNED BY: Author
CHECKED BY: Checker

SS-2.05



Order Plans @ www.LDOnline.com