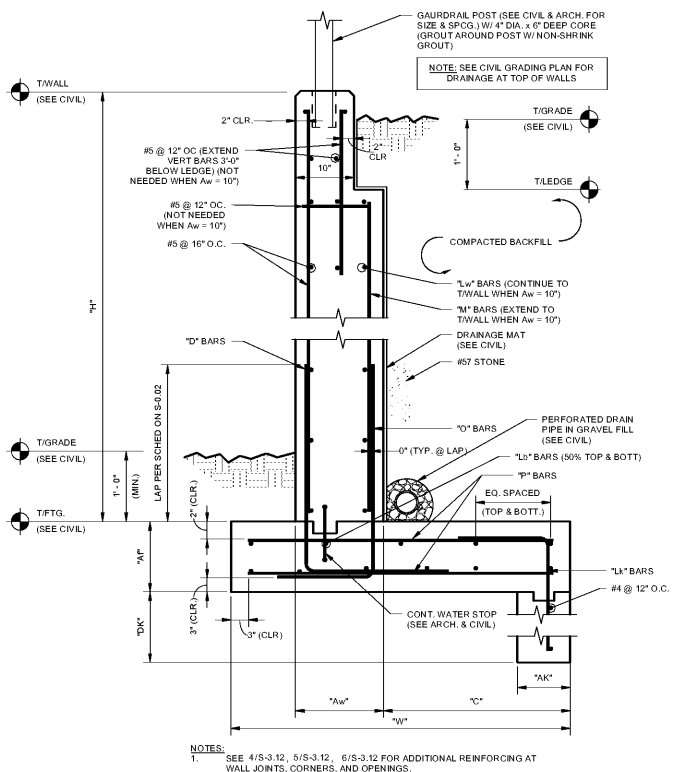


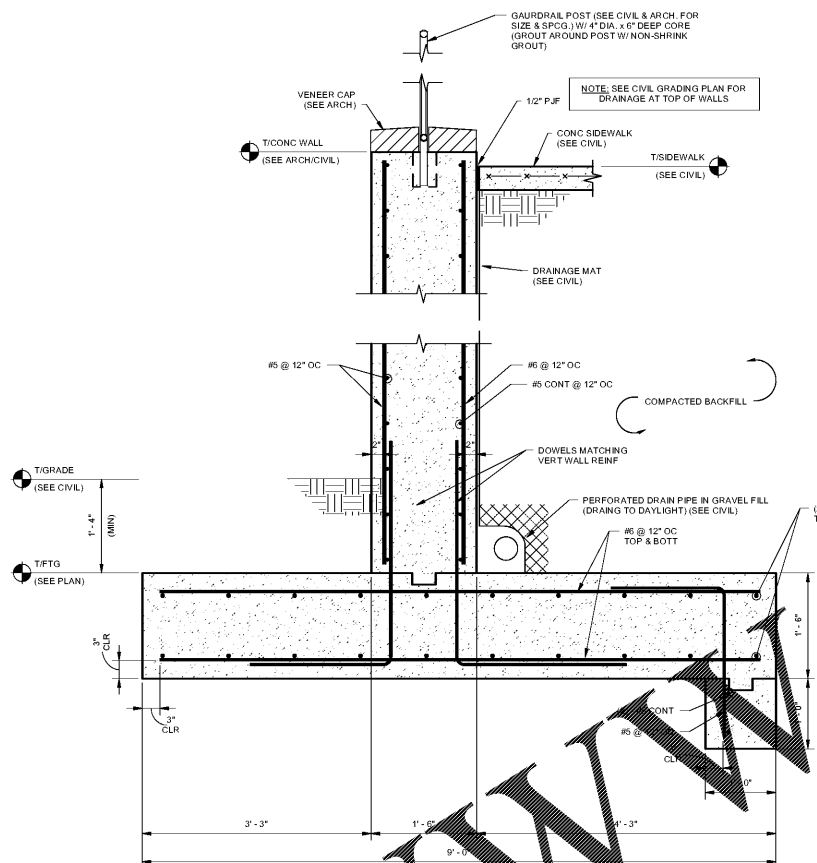
CANTILEVER RETAINING WALLS SCHEDULE (WALLS RETAINING SOIL BACKFILL)													
"H"	"Aw"	"C"	"W"	"AF"	"DK"	"AK"	"D" (DWLS)	"M" (BARS)	"D" (BARS)	"LW" (BARS)	"T" (BARS)	"L1" (BARS)	"L2" (BARS)
0'-0" - 4'-0"	10"	1'-6"	3'-6"	15"	N/A	N/A	#5 @ 16"	#5 @ 14"	#4 @ 16"	#4 @ 16"	#4 @ 12"	8 - #4	N/A
4'-1" - 7'-0"	12"	3'-6"	5'-0"	15"	N/A	N/A	#5 @ 14"	#5 @ 14"	#4 @ 16"	#4 @ 16"	#4 @ 12"	12 - #4	N/A
7'-1" - 10'-0"	12"	3'-0"	7'-0"	15"	N/A	N/A	#5 @ 14"	#5 @ 14"	#4 @ 16"	#4 @ 16"	#4 @ 12"	16 - #5	N/A
10'-1" - 13'-0"	12"	3'-0"	9'-0"	18"	12"	12"	#6 @ 10"	#6 @ 10"	#5 @ 16"	#5 @ 12"	#6 @ 12"	20 - #5	#5 @ 12"
13'-1" - 18'-0"	14"	7'-1"	10'-3"	21"	18"	12"	#7 @ 9"	#7 @ 9"	#6 @ 16"	#6 @ 12"	#6 @ 10"	24 - #6	#5 @ 12"



TYPICAL SITE RETAINING WALL SECTION

SCALE: 1" = 1'-0"

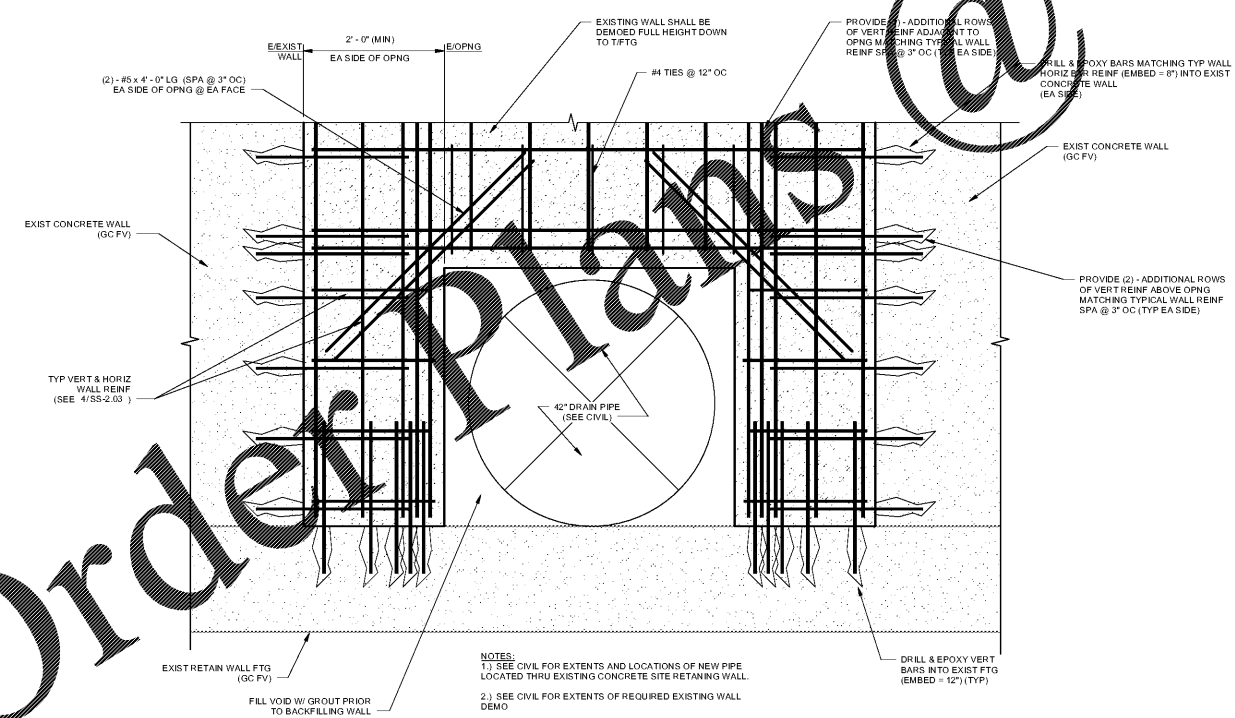
1
SS-2.03



SOUTH PLAZA COURTYARD SITE RETAINING WALL

SCALE: 1" = 1'-0"

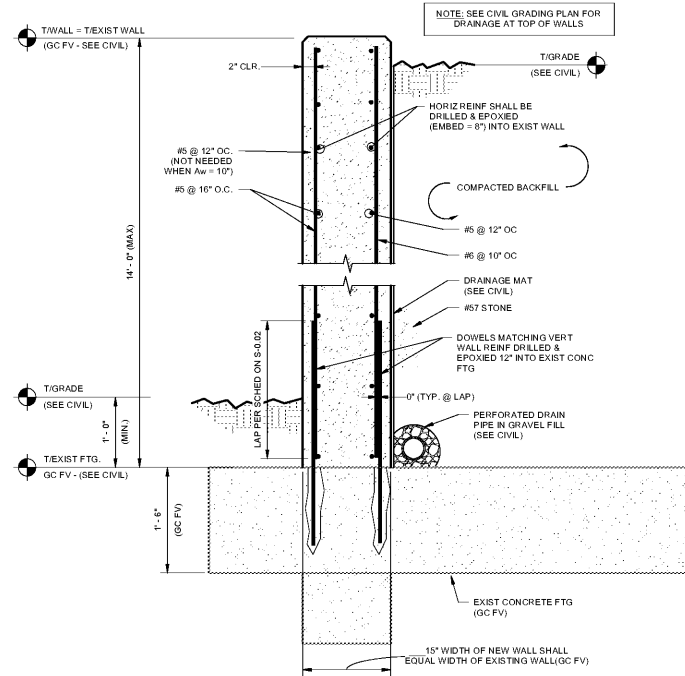
2
SS-2.03



ELEVATION @ PIPE THRU EXIST SITE WALL

SCALE: 1" = 1'-0"

3
SS-2.03



WALL SECTION @ PIPE THRU EXIST SITE WALL

SCALE: 1" = 1'-0"

4
SS-2.03

CHAPMAN GRIFFIN LANIER SUSSENBACH ARCHITECTS
 2500 Cumberland Pkwy., Suite 350, Atlanta, Ga 30339, Phone: 404.733.5493
 DOE FACILITY CODE: 680-3086
RIVERWOOD HIGH SCHOOL - PHASE 3 - AUDITORIUM/GYMNASIUM ADDITION
 5900 RAIDER DRIVE NW SANDY SPRINGS, GA 30328
 FULTON COUNTY SCHOOLS RFP NO. XXX-XX

CGLS ARCHITECTS
 CHAPMAN GRIFFIN LANIER SUSSENBACH ARCHITECTS INC.
 2017
 RELEASED FOR CONSTRUCTION

PES STRUCTURAL ENGINEERS
 11/01/2018

DATE	NO.	DESCRIPTION
10/10/18	1	FINAL CODE SUBMITTAL ISSUED FOR PROPOSALS

PROJECT NO. 0217302.00
 DATE: 09/17/18
 DRAWN BY: RAS
 CHECKED BY: ACS
SS-2.03

Order Plans @ www.LDILine.com