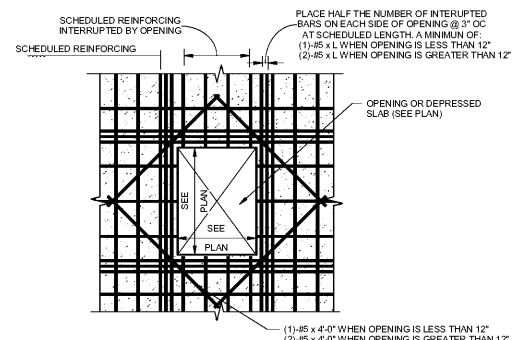
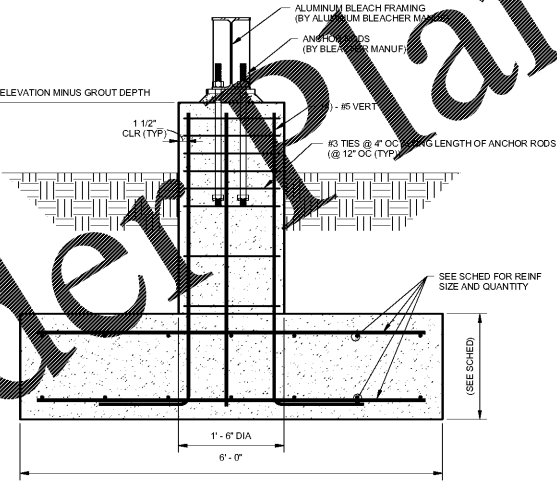


VISITOR BLEACHER FOUNDATION PLAN
SCALE: 3/32" = 1'-0"

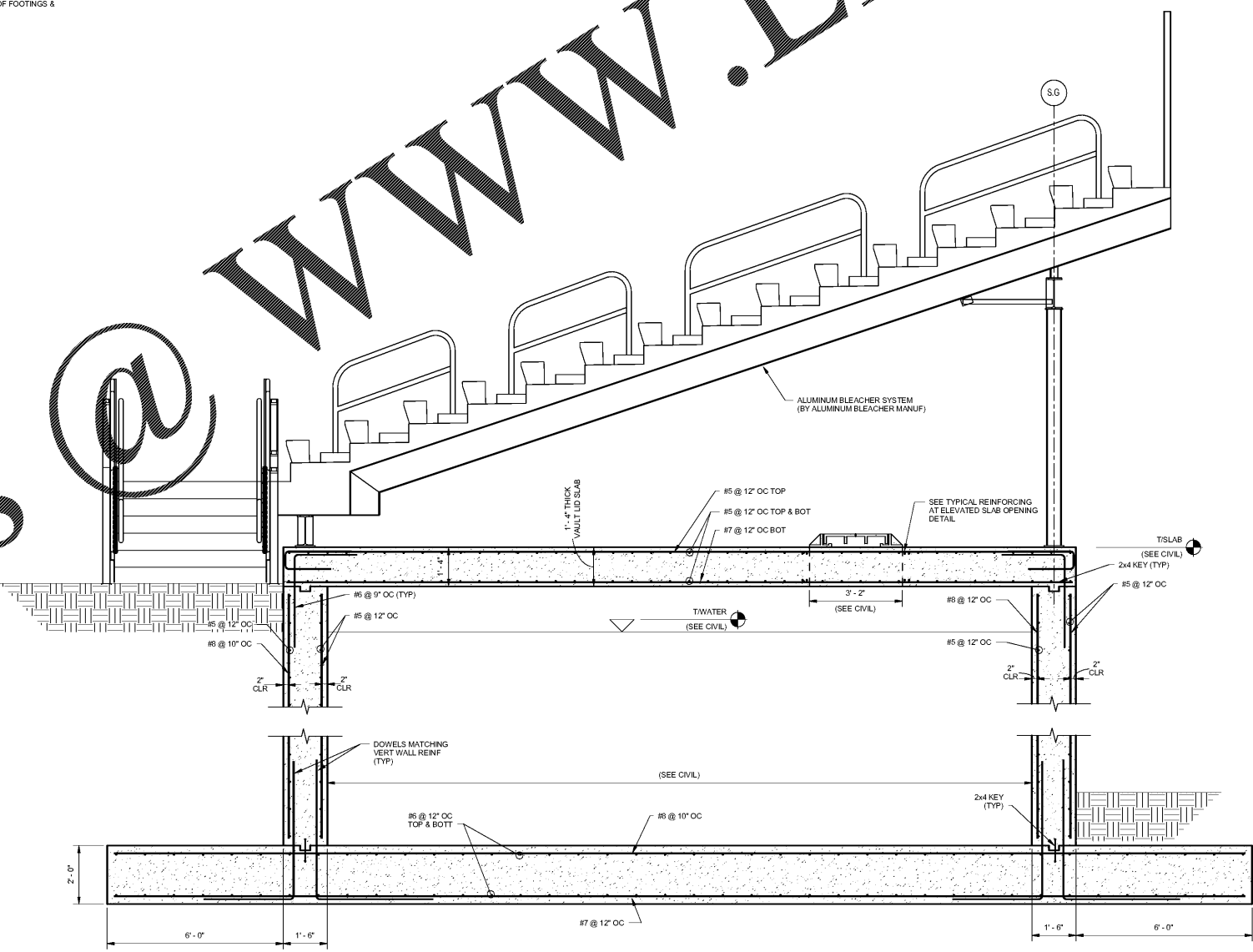
- FOUNDATION PLAN NOTES:**
1. PIER MARK (SEE SCHEDULE ON THIS SHEET)
 2. FOUNDATION MARK (SEE SCHEDULE ON THIS SHEET) → FR / P#
 3. SEE 6/S-3.12 FOR TYP CONC WALL CORNERS & INTERSECTIONS.
 4. SEE 5/S-3.12 FOR TYP CONC WALL CONTROL & CONSTRUCTION JOINTS.
 5. SEE 4/S-3.12 FOR REINF @ WALL OPENINGS.
 6. SEE 4/S-3.21 FOR ADDITIONAL REINF REQUIRED @ SLAB CORNERS.
 7. FINAL PRE-ENGINEERED ALUMINUM BLEACHER FOOTINGS/PIER DESIGNS & LAYOUT SHALL BE CONFIRMED BY FINAL PRE-ENGINEERED CANOPY SHOP DRAWINGS PRIOR TO FABRICATION OR INSTALLATION OF FOOTINGS & PIERS.



TYPICAL REINFORCING AT ELEVATED SLAB OPENINGS & DEPRESSIONS
SCALE: NTS



TYPICAL PIER/FOOTING @ ALUMINUM BLEACHER
SCALE: 1" = 1'-0"



SECTION
SCALE: 1/2" = 1'-0"



CHAPMAN GRIFFIN LANIER SUSENBACH ARCHITECTS INC. 2017

RELEASED FOR CONSTRUCTION

PES STRUCTURAL ENGINEERS



DATE	NO.	DESCRIPTION
10/12/18		
11/01/18		FINAL CODE SEENTIAL ISSUED FOR PROPOSALS

CHAPMAN GRIFFIN LANIER SUSENBACH ARCHITECTS
DOE FACILITY CODE: 660-3086
RIVERWOOD HIGH SCHOOL - PHASE 3 - AUDITORIUM/GYMNASIUM ADDITION
5900 RAIDER DRIVE NW SANDY SPRINGS, GA 30328
FULTON COUNTY SCHOOLS RFP NO. XXX-XX

VISITOR BLEACHERS FOUNDATION PLANS

PROJECT NO. 0217302.00

DATE: 09/17/18

DRAWN BY: RAS
CHECKED BY: ACB

SS-2.02