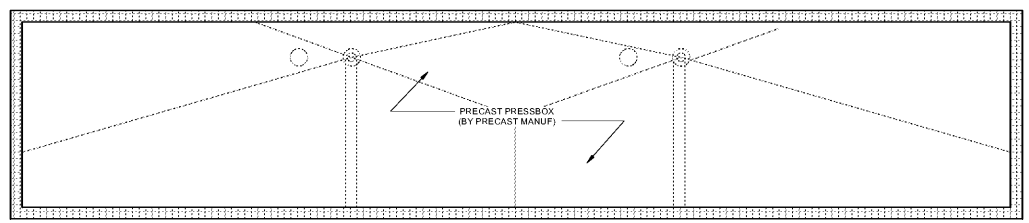


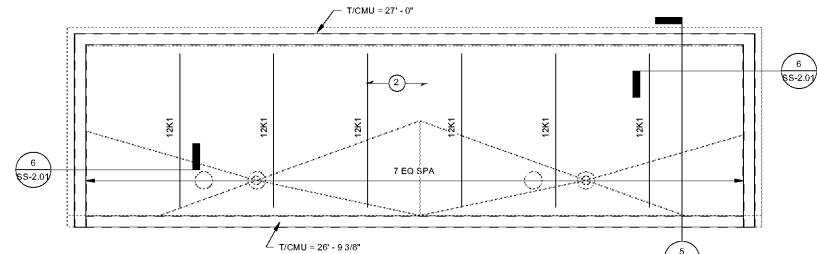
**HOME BLEACHERS
CONCESSIONS ROOF FRMG
PLAN**

SCALE: 1/4" = 1'-0"
1 SS-2.01



**HOME BLEACHERS PRESSBOX
ROOF FRMG PLAN**

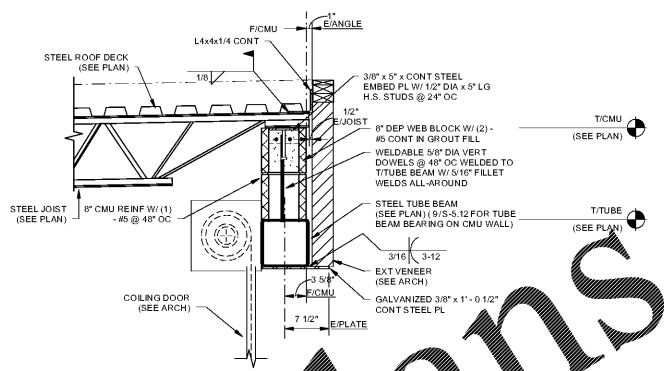
SCALE: 1/4" = 1'-0"
2 SS-2.01



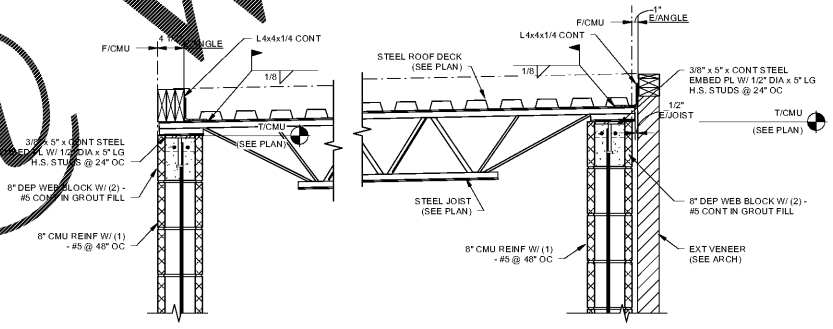
**HOME BLEACHERS RESTROOM
ROOF FRMG PLAN**

SCALE: 1/4" = 1'-0"
3 SS-2.01

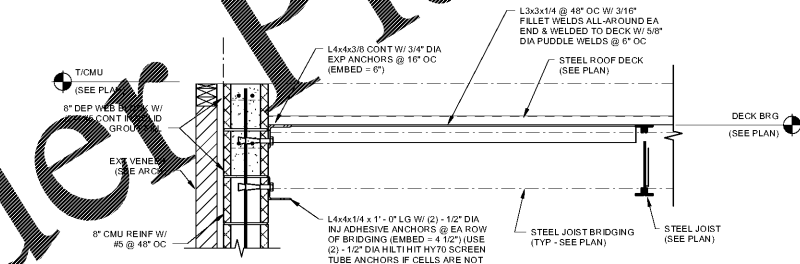
- ROOF FRAMING PLAN NOTES:**
- 2 DENOTES 22 GAUGE 1 1/2" B WIDE RIB STEEL ROOF DECK. MINIMUM DECK PROPERTIES:
 b = 0.153 IN/4FT
 I_x = 0.183 IN⁴/FT
 S_x = 0.186 IN³/FT
 S_y = 0.192 IN³/FT
 - TICMU & T/STEEL ELEVATIONS THIS PLAN REFERENCE CONCESSIONS REF T/SLAB = (+) 0'-0"
 - PROVIDE STANDARD HORIZONTAL BRIDGING PER SJI.
 - SEE "WATER PIPING SUPPORT SCHEDULE" ON SHEET S-0.02 FOR ALL PIPING SUPPORTED FROM ROOF STRUCTURE. NOTIFY EOR IF PIPING WEIGHT IS IN EXCESS OF THOSE NOTED IN SCHEDULE.
 - DO NOT SUPPORT MULTIPLE SPRINKLER MANS FROM THE SAME JOIST. CONTRACTOR TO PROVIDE SPRINKLER DRAWINGS TO STRUCTURAL ENGINEER AND JOIST MANUFACTURER FOR REVIEW AND COORDINATION PRIOR TO JOIST FABRICATION.
 - MAX DEPTH OF PONDING AT LOWEST POINT OF ROOF SHALL NOT EXCEED 4" UNDER PEAK INTENSITY FORM.
 - SEE 1/5-S.11 FOR TYP ROOF OPNG DECK SUPPORT FRAMING. SUPPORT FRAMING, FINAL ROOF JOIST DIMENSIONS AND LOCATIONS SHALL BE VERIFIED BY GC AND COORDINATED W/ THE FINAL RTU SUBMITTALS.
 - SEE 1/5-S.11 FOR TYP JOIST CHORD SUPPORT.
 - SEE 1/5-S.12 FOR TYP EQUIPMENT CURB SUPPORT FRAMING. RTU WEIGHTS AS SHOWN SHALL INCLUDE EQUIPMENT WEIGHTS. ALL FINAL RTU WEIGHTS SHALL BE CONFIRMED W/ ACTUAL EQUIPMENT PROVIDED AND COORDINATED W/ STEEL JOIST AND STEEL FRAMING SUBMITTALS.



SECTION
SCALE: 1" = 1'-0"
4 SS-2.01



SECTION
SCALE: 1" = 1'-0"
5 SS-2.01



SECTION
SCALE: 1" = 1'-0"
6 SS-2.01

Order Plans @ www.LDILine.com

CHAPMAN GRIFFIN LANIER SUSSENBACH ARCHITECTS
 2500 Cumberland Pkwy, Atlanta, Ga 30339 Phone: 404.733.5493

ARCHITECTS
 CHAPMAN GRIFFIN LANIER SUSSENBACH ARCHITECTS, INC.
 2017
 RELEASED FOR CONSTRUCTION

REGISTERED PROFESSIONAL ENGINEER
 P.E. SANDY SPRINGS, GA 30088
 11/01/2018

DATE	NO.	DESCRIPTION
10/19/18		FINAL CODE SUBMITTAL
11/01/18		ISSUED FOR PROPOSALS

PROJECT TITLE
 STADIUM GRANDSTANDS PARTIAL ROOF FRAMING PLANS & SECTIONS

PROJECT NO.
 0217302.00

DATE
 09/17/18

DRAWN BY
 RAS

CHECKED BY
 ACS

PROJECT
 RIVERWOOD HIGH SCHOOL - PHASE 3 - AUDITORIUM/GYMNASIUM ADDITION
 5900 RAIDER DRIVE NW SANDY SPRINGS, GA 30088
 FULTON COUNTY SCHOOLS RFP NO. XXX-XX

SS-2.01