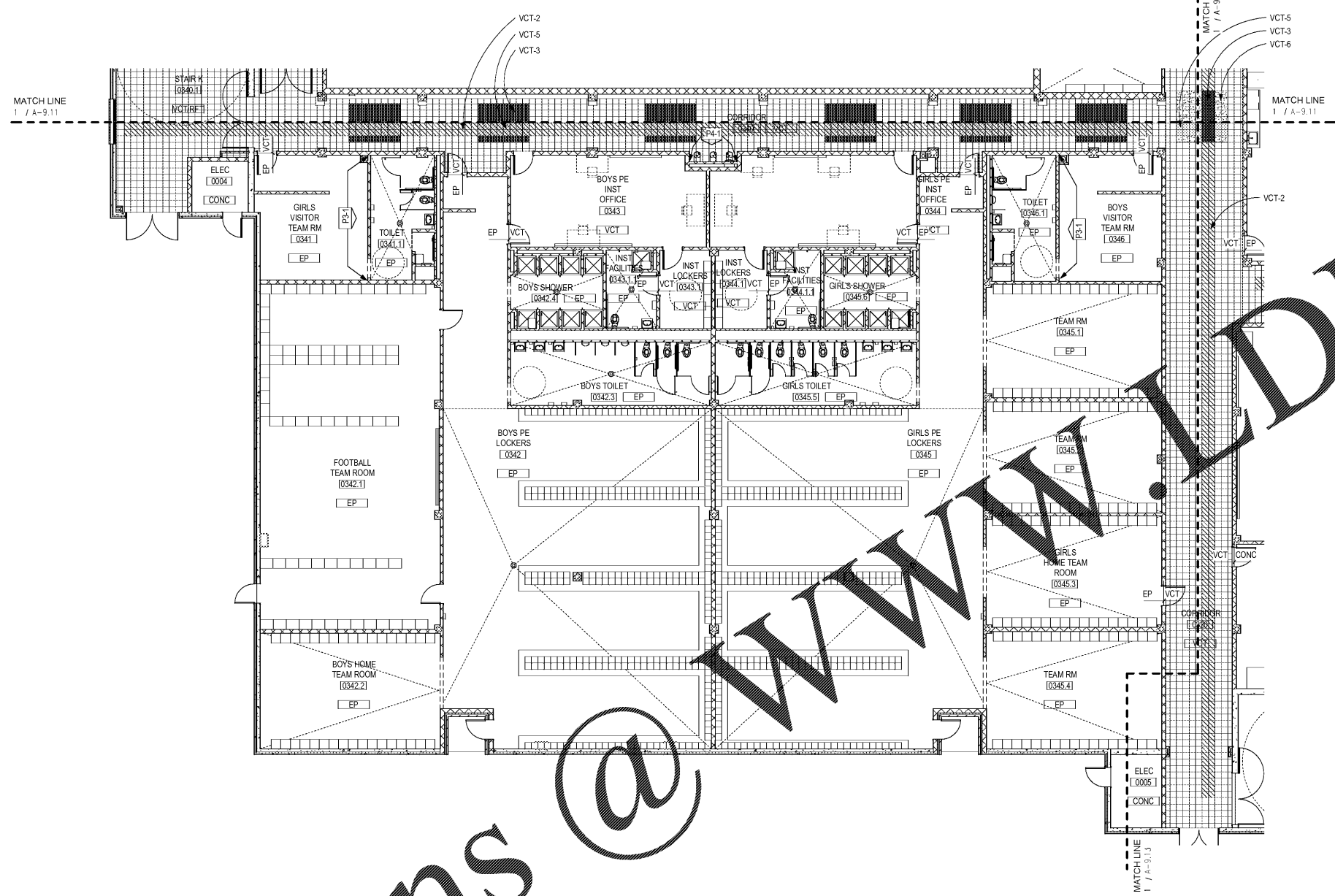


Order Plans @



1 LEVEL 000 FINISH PLAN - PART 2
A-9.12 1/8" = 1'-0"

FINISH NOTES

1. ALL VCT FLOORS TO BE VCT-1 UNO.
2. ALL CPT FLOOR TO BE CPT-1 UNO.
3. ALL WALLS TO BE P1-1 UNO.
4. ALL FLOOR PATTERNS TO BEGIN CENTER / CENTER UNO.
5. PROVIDE TRANSITIONS BETWEEN ADJACENT FLOOR FINISHES AS INDICATED IN BILL DETAILS ON SHEET A-8.30.
6. SEE FINISH SCHEDULE IN SPECIFICATION APPENDIX A FOR LOCATIONS OF EPOXY PAINT.
7. ALL CLASSROOM VCT TO ALIGN WITH VCT IN ADJOINING CORRIDOR.
8. PROVIDE METAL EDGE STRIPS AT TRANSITIONS BETWEEN EPOXY FLOORING & VCT.
9. AT DRAMA CLASSROOM, STAGE, BACK STAGE & UNLOADING / LOADING AREA - PAINT ALL WALLS & CEILING / UNDERSIDE OF STRUCTURE BLACK. PROVIDE BLACK VCT @ FLOOR FINISH EXCEPT WHERE WOOD IS INDICATED.

FLOORING NOTES

CONC	SEALED CONCRETE	MT	MARBLE THRESHOLD
CPT	CARPET	PT	PORCELAIN TILE
ESD	ELECTRO STATIC	RFT	RUBBER FLOOR TILE
EP	DISSIPATIVE TILE	TERR	PRECAST TERRAZZO / TERRAZZO TILE
	EPOXY	VCT	VINYL COMPOSITION TILE
		RAS	RESILIENT ATHLETIC SURFACING

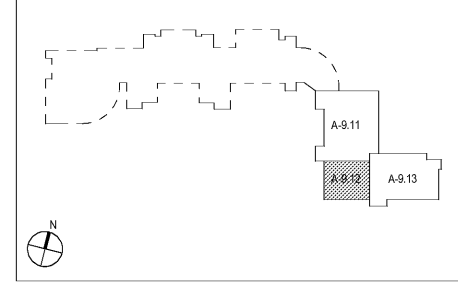
WALL NOTES

CWT	CERAMIC WALL TILE
P	PAINT

PAINT SYSTEM LEGEND

-1	EGGSHELL	PAINT SYSTEM PAINT COLOR (REFERENCE FINISH LIST FOR TYPE)
-2	FLAT (CEILING ONLY)	
-3	SEMI-GLOSS (STANDARD)	
-4	HIGH-GLOSS	
-5	ALKYD FOR CMU	

KEYPLAN



CGLS ARCHITECTS
CHAPMAN GRIFFIN LANIER SUSSENBACH ARCHITECTS INC.
2018

STATE OF GEORGIA
ROBERT SUSSENBACH
REGISTERED ARCHITECT

DATE	NO.	DESCRIPTION
01/27/18	1	SCHEMATIC DESIGN SUBMITTAL
02/19/18	2	SCHEMATIC DESIGN DEVELOPMENT
02/17/18	3	SCHEMATIC DESIGN DEVELOPMENT
02/17/18	4	SCHEMATIC DESIGN DEVELOPMENT
02/17/18	5	SCHEMATIC DESIGN DEVELOPMENT
02/17/18	6	SCHEMATIC DESIGN DEVELOPMENT
02/17/18	7	SCHEMATIC DESIGN DEVELOPMENT
02/17/18	8	SCHEMATIC DESIGN DEVELOPMENT
02/17/18	9	SCHEMATIC DESIGN DEVELOPMENT
02/17/18	10	SCHEMATIC DESIGN DEVELOPMENT
02/17/18	11	SCHEMATIC DESIGN DEVELOPMENT
02/17/18	12	SCHEMATIC DESIGN DEVELOPMENT
02/17/18	13	SCHEMATIC DESIGN DEVELOPMENT
02/17/18	14	SCHEMATIC DESIGN DEVELOPMENT
02/17/18	15	SCHEMATIC DESIGN DEVELOPMENT
02/17/18	16	SCHEMATIC DESIGN DEVELOPMENT
02/17/18	17	SCHEMATIC DESIGN DEVELOPMENT
02/17/18	18	SCHEMATIC DESIGN DEVELOPMENT
02/17/18	19	SCHEMATIC DESIGN DEVELOPMENT
02/17/18	20	SCHEMATIC DESIGN DEVELOPMENT
02/17/18	21	SCHEMATIC DESIGN DEVELOPMENT
02/17/18	22	SCHEMATIC DESIGN DEVELOPMENT
02/17/18	23	SCHEMATIC DESIGN DEVELOPMENT
02/17/18	24	SCHEMATIC DESIGN DEVELOPMENT
02/17/18	25	SCHEMATIC DESIGN DEVELOPMENT
02/17/18	26	SCHEMATIC DESIGN DEVELOPMENT
02/17/18	27	SCHEMATIC DESIGN DEVELOPMENT
02/17/18	28	SCHEMATIC DESIGN DEVELOPMENT
02/17/18	29	SCHEMATIC DESIGN DEVELOPMENT
02/17/18	30	SCHEMATIC DESIGN DEVELOPMENT
02/17/18	31	SCHEMATIC DESIGN DEVELOPMENT
02/17/18	32	SCHEMATIC DESIGN DEVELOPMENT
02/17/18	33	SCHEMATIC DESIGN DEVELOPMENT
02/17/18	34	SCHEMATIC DESIGN DEVELOPMENT
02/17/18	35	SCHEMATIC DESIGN DEVELOPMENT
02/17/18	36	SCHEMATIC DESIGN DEVELOPMENT
02/17/18	37	SCHEMATIC DESIGN DEVELOPMENT
02/17/18	38	SCHEMATIC DESIGN DEVELOPMENT
02/17/18	39	SCHEMATIC DESIGN DEVELOPMENT
02/17/18	40	SCHEMATIC DESIGN DEVELOPMENT
02/17/18	41	SCHEMATIC DESIGN DEVELOPMENT
02/17/18	42	SCHEMATIC DESIGN DEVELOPMENT
02/17/18	43	SCHEMATIC DESIGN DEVELOPMENT
02/17/18	44	SCHEMATIC DESIGN DEVELOPMENT
02/17/18	45	SCHEMATIC DESIGN DEVELOPMENT
02/17/18	46	SCHEMATIC DESIGN DEVELOPMENT
02/17/18	47	SCHEMATIC DESIGN DEVELOPMENT
02/17/18	48	SCHEMATIC DESIGN DEVELOPMENT
02/17/18	49	SCHEMATIC DESIGN DEVELOPMENT
02/17/18	50	SCHEMATIC DESIGN DEVELOPMENT

DOE FACILITY CODE: 660-3086
**RIVERWOOD HIGH SCHOOL PHASE 3-8
 AUDITORIUM/GYMNASIUM ADDITION**
 5900 RAIDER DRIVE NW SANDY SPRINGS, GA 30328
 FULTON COUNTY SCHOOLS RFP NO. 411-19

CHAPMAN GRIFFIN LANIER SUSSENBACH ARCHITECTS
 400 Galleria Pkwy., Suite 100 Atlanta, Ga 30339 Phone: 404.733.5493

PROJECT NO. 16015.02
 DATE: 09/17/18
 DRAWN BY: Author
 CHECKED BY: Cracker
 SHEET NO. **A-9.12**