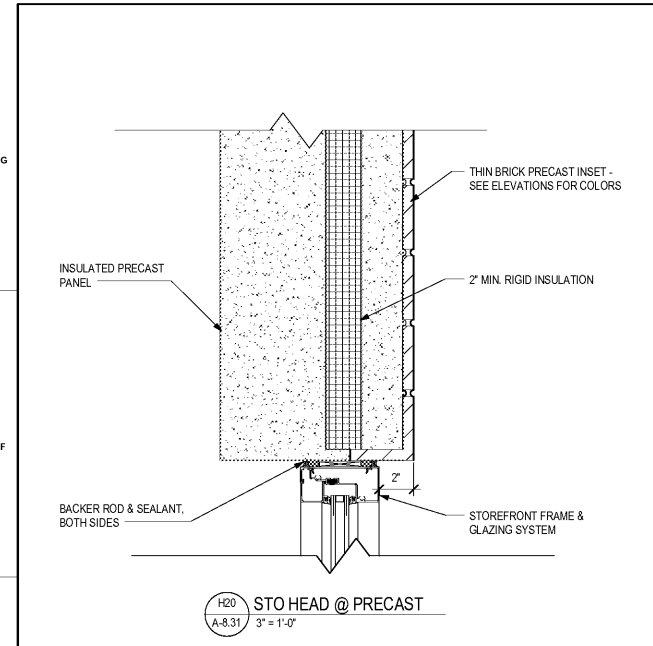
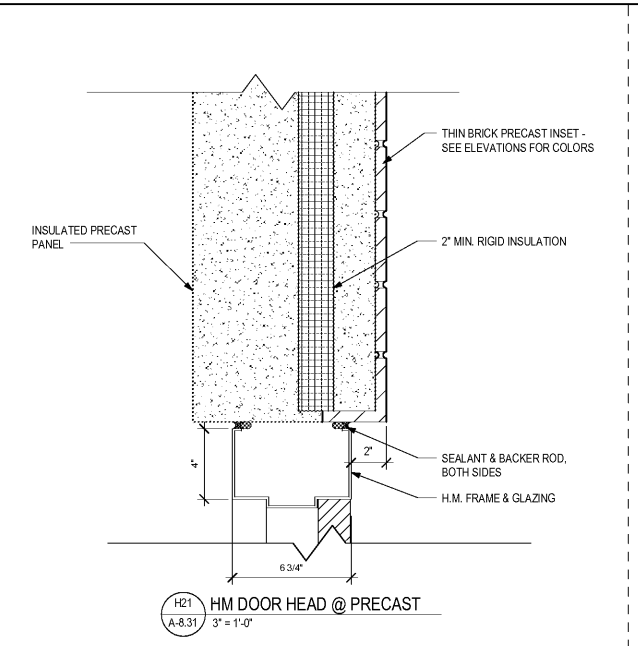


WWW.LDILINE.COM

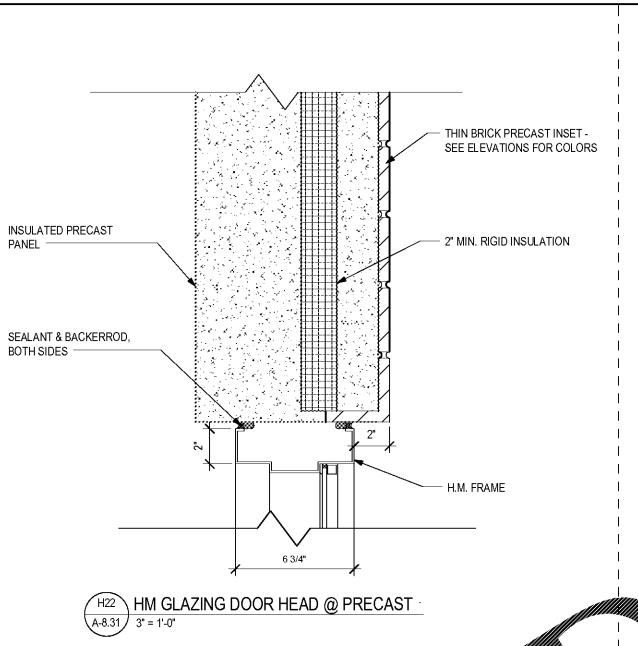
Order Plans @



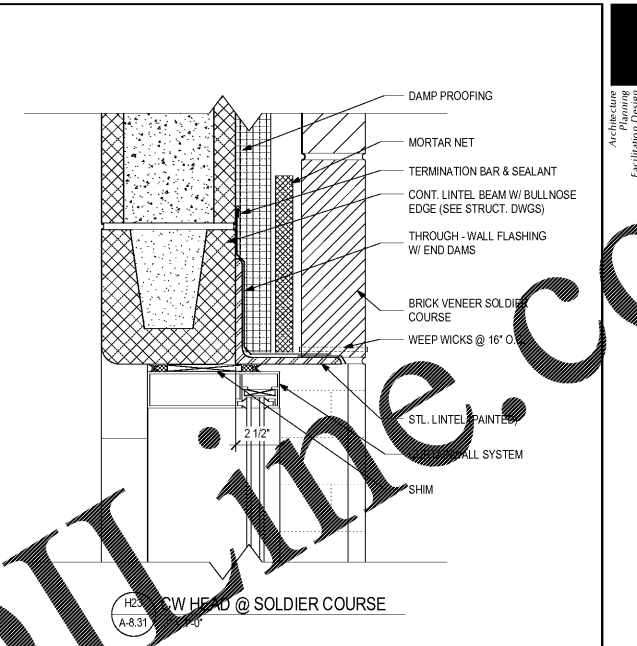
H20
A-8.31
3' = 1'-0"



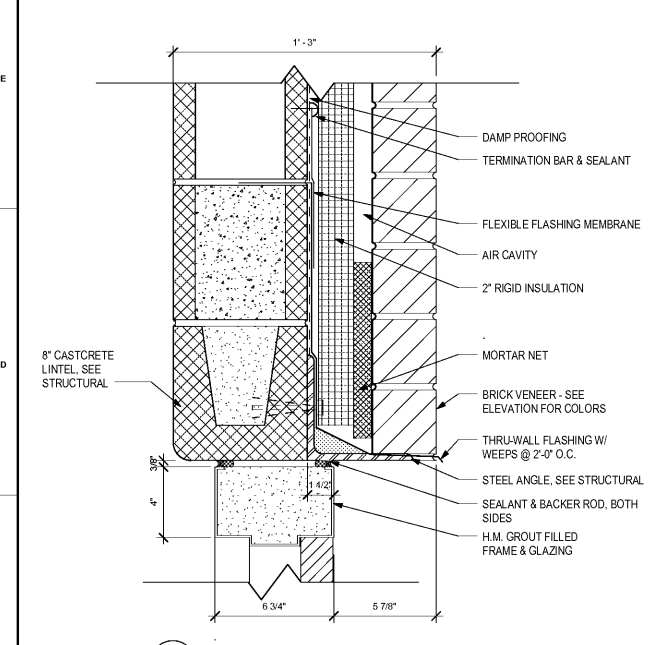
H21
A-8.31
3' = 1'-0"



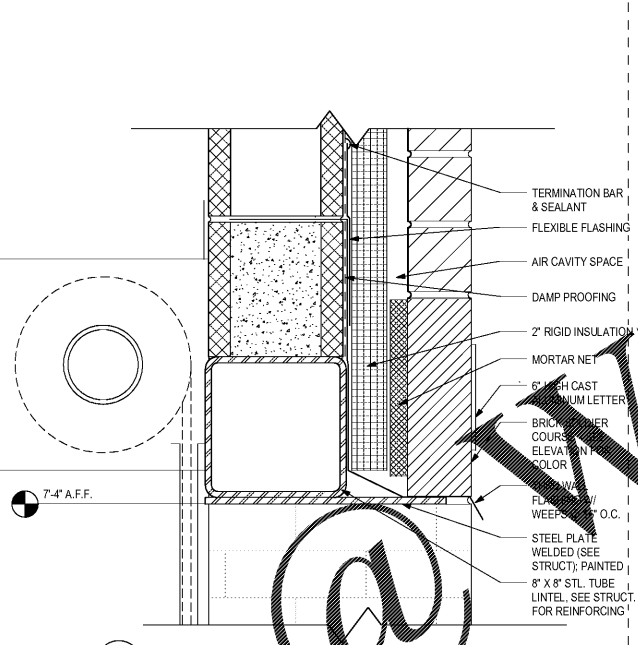
H22
A-8.31
3' = 1'-0"



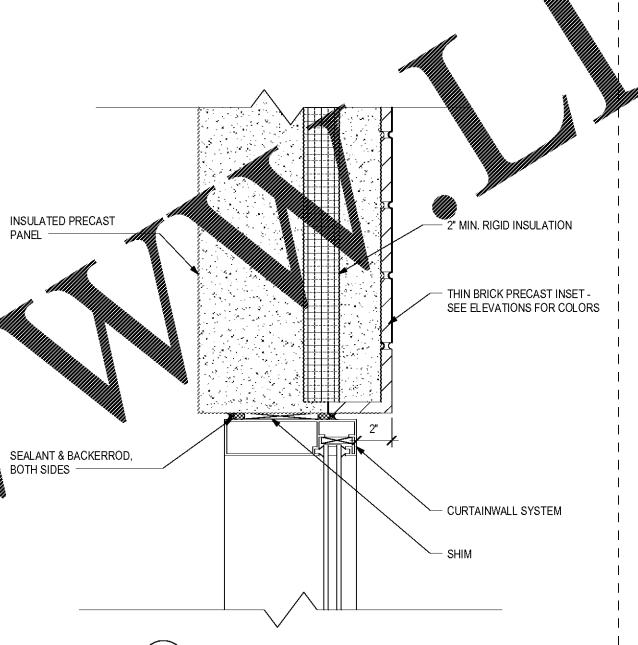
H23
A-8.31
3' = 1'-0"




H24
A-8.31
3' = 1'-0"



H25
A-8.31
3' = 1'-0"



H26
A-8.31
3' = 1'-0"



CGLS ARCHITECTS
CHAPMAN GRIFFIN LANIER SUSSENBACH ARCHITECTS INC.
2018
REGISTERED ARCHITECT

DATE	NO.	DESCRIPTION
01/27/18	001	SCHEMATIC DEVELOPMENT
02/19/18	002	SCHEMATIC DEVELOPMENT
03/17/18	003	SCHEMATIC DEVELOPMENT
04/10/18	004	SCHEMATIC DEVELOPMENT
05/01/18	005	SCHEMATIC DEVELOPMENT

STATE OF GEORGIA
REGISTERED ARCHITECT
ROBERT S. SUSSENBACH
LICENSE NO. 10000

DOE FACILITY CODE: 660-3086
RIVERWOOD HIGH SCHOOL PHASE 3-8
AUDITORIUM/GYMNASIUM ADDITION
5900 RAIDER DRIVE NW SANDY SPRINGS, GA 30328
FULTON COUNTY SCHOOLS RFP NO. 411-19

CHAPMAN GRIFFIN LANIER SUSSENBACH ARCHITECTS
400 Galleria Pkwy., Suite 100 Atlanta, Ga 30339 Phone: 404.733.5493

DOOR DETAILS - EXTERIOR

PROJECT NO. 16015.02
DATE: 09/17/18
DRAWN BY: Author
CHECKED BY: Cracker
SHEET NO. **A-8.31**