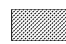


NOTE:
 SPANDREL GLASS

WINDOW SYSTEM LEGEND:
 WXX - HOLLOW METAL
 SXX - STOREFRONT
 CXX - CURTAINWALL

CURTAINWALL FRAME NOTES:

- ALL CURTAINWALL FRAMES IN EXTERIOR WALL CONDITIONS SHALL RECEIVE TINTED INSULATING GLAZING UNITS. GLASS UNITS TO BE G1 UNLESS NOTED OTHERWISE.
- SEE BUILDING ELEVATIONS FOR WINDOW TYPE LOCATION.
- ALL GLAZING UNITS ARE TO BE TEMPERED
- ALL OVERALL DIMENSIONS ARE TO ROUGH OPENING. ALLOW FOR SEALANT JOINT AT ALL SIDES.

THERMAL TRANSMITTANCE REQUIREMENTS:

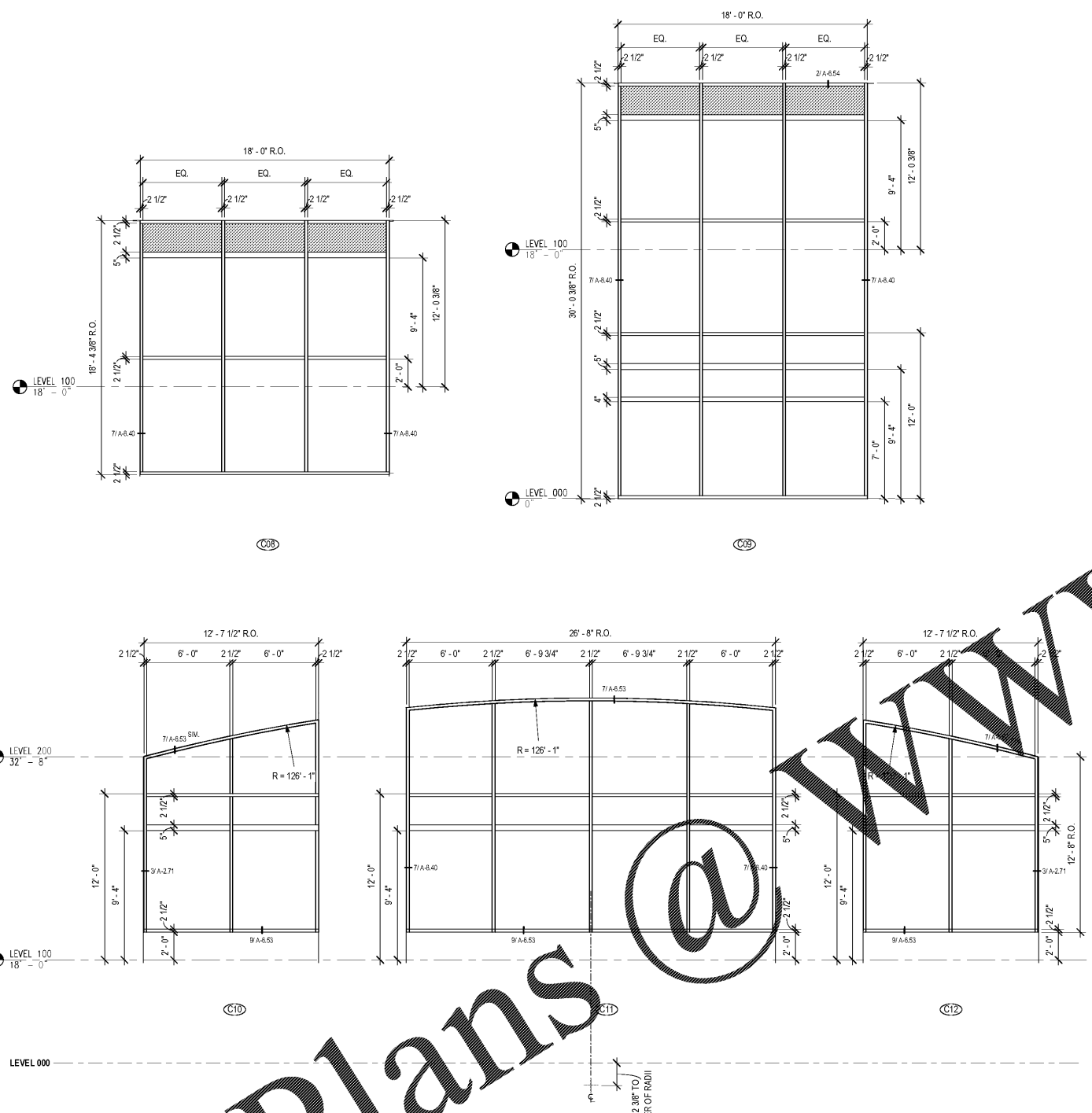
- EACH EXTERIOR DOOR SHALL HAVE A MIN. U-FACTOR OF 0.07 PER SPEC. 08110-1.3.A.3 EACH EXTERIOR WINDOW SHALL HAVE A MIN U-FACTOR OF 0.63 AND MIN. SHADING COEFFICIENT OF 0.25 PER SPEC. 08800-1.4.C.1.

GENERAL NOTES:

- EACH EXTERIOR WINDOW & DOOR SHALL BE LABELED BY THE MANUFACTURER TO CERTIFY COMPLIANCE W/ THE REQUIREMENTS OF THE NATIONAL PERFORMANCE RATING COUNCIL PER NFRC. 100-97 FOR FIELD VENTILATION BY THE INSPECTOR.

GLAZING TYPES:

G1 1" LOW E TINTED INSULATING GLAZING, UNTEMPERED
 G2 1" LOW E CLEAR INSULATED GLAZING, TEMPERED
 G3 INSULATED SPANDREL GLAZING
 G4 1/4" CLEAR TEMPERED GLAZING
 G5 1 1/8" CLEAR CONTIGUOUS LOW E TINTED, OBTAINED (FROSTED) INSULATED GLAZING UNITS
 G6 1 1/8" CLEAR CONTIGUOUS LOW E TINTED, OBTAINED (FROSTED) INSULATED GLAZING UNITS



SEE BID ALTERNATE 10 FOR ADDITIONAL INFORMATION

NOTE: ALL GLAZING IN THIS FRAME, EXCEPT GLAZING WITHIN DOORS, TO BE TYPE G6

SEE BID ALTERNATE 10 FOR ADDITIONAL INFORMATION

NOTE: ALL GLAZING IN THIS FRAME, EXCEPT GLAZING WITHIN DOORS, TO BE TYPE G6

SEE BID ALTERNATE 10 FOR ADDITIONAL INFORMATION

NOTE: ALL GLAZING IN THIS FRAME, EXCEPT GLAZING WITHIN DOORS, TO BE TYPE G6

CURTAINWALL FRAMES



DATE	NO.	DESCRIPTION
03/27/18		SCHEMATIC SUBMITTAL DESIGN DEVELOPMENT
04/19/18		SCHEMATIC SUBMITTAL DESIGN DEVELOPMENT
05/17/18		SCHEMATIC SUBMITTAL DESIGN DEVELOPMENT
07/18/18		SCHEMATIC SUBMITTAL DESIGN DEVELOPMENT
10/18/18		SCHEMATIC SUBMITTAL DESIGN DEVELOPMENT
11/01/18		SCHEMATIC SUBMITTAL DESIGN DEVELOPMENT



DATE	NO.	DESCRIPTION
03/27/18		SCHEMATIC SUBMITTAL DESIGN DEVELOPMENT
04/19/18		SCHEMATIC SUBMITTAL DESIGN DEVELOPMENT
05/17/18		SCHEMATIC SUBMITTAL DESIGN DEVELOPMENT
07/18/18		SCHEMATIC SUBMITTAL DESIGN DEVELOPMENT
10/18/18		SCHEMATIC SUBMITTAL DESIGN DEVELOPMENT
11/01/18		SCHEMATIC SUBMITTAL DESIGN DEVELOPMENT

DOE FACILITY CODE: 660-3066
 RIVERWOOD HIGH SCHOOL PHASE 3-8
 AUDITORIUM/GYMNASIUM ADDITION
 5900 RAIDER DRIVE NW SANDY SPRINGS, GA 30328
 FULTON COUNTY SCHOOLS RFP NO. 411-19

CURTAIN WALL FRAME ELEVATIONS

PROJECT NO. 16015.02
 DATE: 09/17/18
 DRAWN BY: Author
 CHECKED BY: Cracker

A-8.21

WWW.LDILINE.COM

Order Plans

CHAPMAN GRIFFIN LANIER SUSSENBACK ARCHITECTS
 400 Galleria Pkwy., Suite 100 Atlanta, Ga 30339 Phone: 404.733.5493