



CHAPMAN GRIFFIN LANIER SUSENBACH ARCHITECTS  
ARCHITECTS  
MEMBERS IN  
2018

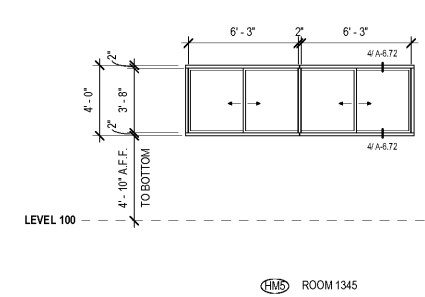
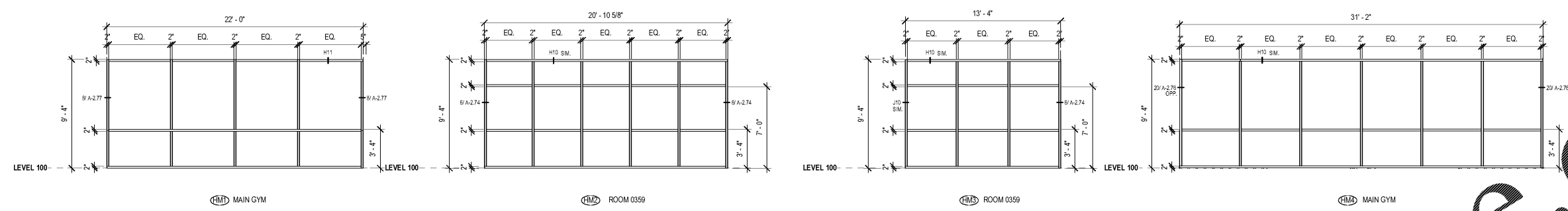
RELEASED FOR CONSTRUCTION



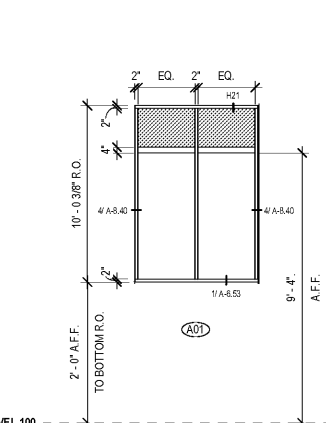
DATE	NO.	DESCRIPTION
01/27/18		CODE PRELIMINARY SUBMITTAL DESIGN DEVELOPMENT
04/19/18		CODE CONSTRUCTION DOCUMENTS
06/17/18		CODE CHECK-SET/ PERMIT SET
10/10/18		FINAL CODE SUBMITTAL ISSUED FOR PROPOSAL

DOE FACILITY CODE: 660-3086  
**RIVERWOOD HIGH SCHOOL PHASE 3-8  
 AUDITORIUM/GYMNASIUM ADDITION**  
 5900 RAIDER DRIVE NW SANDY SPRINGS, GA 30328  
 FULTON COUNTY SCHOOLS RFP NO. 411-19

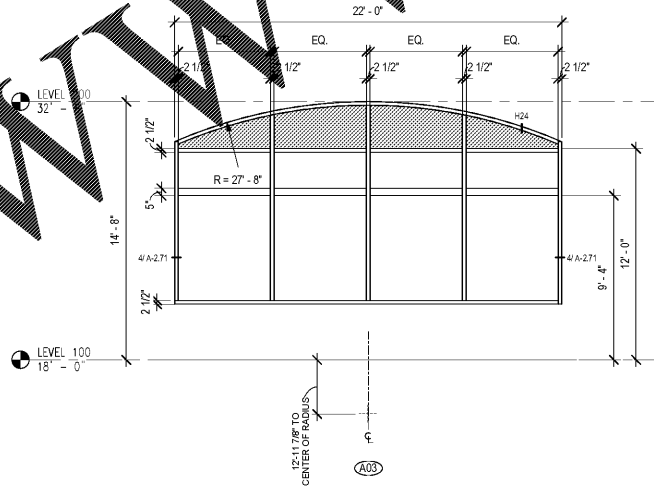
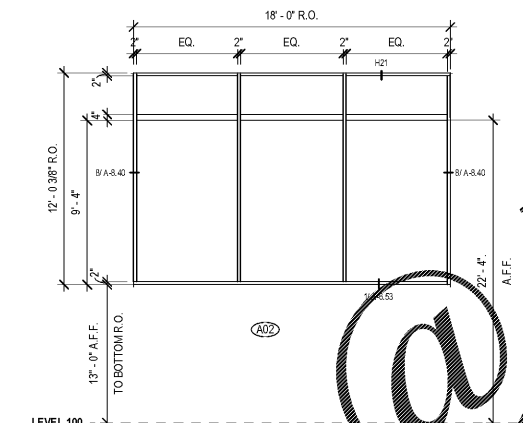
PROJECT NO. 16015.02  
 DATE: 09/17/18  
 DRAWN BY: Author  
 CHECKED BY: Checker  
**A-8.20**



HOLLOW METAL WINDOW FRAMES



STOREFRONT WINDOW FRAMES



**GLAZING TYPES:**

G1	1" LOW E TINTED INSULATED GLAZING, TEMPERED
G2	1" LOW E CLEAR INSULATED GLAZING, TEMPERED
G3	1" INSULATED SPANDREL GLAZING
G4	1/4" CLEAR TEMPERED GLAZING
G5	ACOUSTICAL, DOUBLE GLAZED INSULATING UNITS
G6	1 1/16" SOLAR CONTROL LOW E TINTED, OBSCURED (FROSTED) INSULATED GLAZING UNITS.

**WINDOW SYSTEM LEGEND:**

WXX	HOLLOW METAL
SXX	STOREFRONT
CXX	CORNER WINDOW

**NOTE:**  
 SPANDREL GLAZING

- GENERAL NOTES:**
- ALL FRAMES IN EXTERIOR WALL CONDITIONS SHALL RECEIVE TINTED INSULATING GLAZING UNITS. GLAZING UNITS SHALL BE TYPE G1 UNLESS NOTED OTHERWISE.
  - SEE BUILDING ELEVATIONS FOR WINDOW TYPING NOTATIONS.
  - ALL GLAZING UNITS ARE TO BE TINTED.
  - ALL OVERALL DIMENSIONS ARE TO MATCH OPERATING ALLOW FOR SEALANT JOINT ON ALL SIDES.

- HOLLOW METAL FRAME GENERAL NOTES:**
- GLAZING FOR ALL INTERIOR FRAMES & DOORS SHALL BE CLEAR GLASS, UNLESS NOTED OTHERWISE. (G4)
  - ALL FRAMES IN EXTERIOR WALL CONDITIONS SHALL RECEIVE 1" INSULATING CLEAR GLASS UNITS (G2) UNLESS NOTED OTHERWISE.
  - ALL GLASS UNITS ARE TO BE TEMPERED UNLESS NOTED OTHERWISE.
  - ALL FRAMES IN FIRE-RATED PARTITIONS SHALL RECEIVE FIRE RATED GLASS TO MATCH WALL RATINGS. COORDINATE THICKNESS OF GLASS W/ FRAME.
  - FASTEN ALL METAL THRESHOLDS & METAL EDGE STRIPS W/ 2" LONG STAINLESS STEEL SCREWS. SET EXTERIOR THRESHOLDS IN FULL BED OF MASTIC.
  - PROVIDE CONDUIT AND GROUT BOXES WHERE ACCESS CONTROL DEVICES ARE SCHEDULED IN FINISH HARDWARE SCHEDULE. (SEE ELECT. DWGS.)
  - REMOVABLE STOPS ARE TO BE ON EXTERIOR SIDE OF EXTERIOR HOLLOW METAL FRAMES. USE VANDAL RESISTANT SCREWS. COUNTERSINK & COVER SCREW HEAD W/ SEALANT PRIOR TO PAINTING.
  - REMOVABLE STOPS ARE TO BE ON CORRIDOR SIDE OF INTERIOR HOLLOW METAL FRAMES.

EVERY EXTERIOR WINDOW & DOOR SHALL BE LABELED BY THE MANUFACTURER TO CERTIFY COMPLIANCE W/ THE REQUIREMENTS OF THE NATIONAL FENESTRATION RATING COUNCIL PER NFRC. 100-97 FOR FIELD VERIFICATION BY THE INSPECTOR.

WWW.LDILine.com

Order Plans @

CHAPMAN GRIFFIN LANIER SUSENBACH ARCHITECTS  
 400 Galleria Pkwy., Suite 100 Atlanta, Ga 30339 Phone: 404.733.5493